

RGS20 Antibody (monoclonal) (M04)**Mouse monoclonal antibody raised against a partial recombinant RGS20.****Catalog # AT3629a****Specification**

RGS20 Antibody (monoclonal) (M04) - Product Information

Application	IF, WB, E
Primary Accession	O76081
Other Accession	NM_003702
Reactivity	Human, Mouse
Host	Mouse
Clonality	Monoclonal
Isotype	IgG2a Kappa
Calculated MW	43692

RGS20 Antibody (monoclonal) (M04) - Additional Information**Gene ID** 8601**Other Names**

Regulator of G-protein signaling 20, RGS20, Gz-selective GTPase-activating protein, G(z)GAP, Gz-GAP, Regulator of G-protein signaling Z1, Regulator of Gz-selective protein signaling 1, RGS20, RGSZ1, ZGAP1

Target/Specificity

RGS20 (NP_003693, 78 a.a. ~ 176 a.a) partial recombinant protein with GST tag. MW of the GST tag alone is 26 KDa.

Dilution

WB~~1:500~1000

Format

Clear, colorless solution in phosphate buffered saline, pH 7.2 .

Storage

Store at -20°C or lower. Aliquot to avoid repeated freezing and thawing.

Precautions

RGS20 Antibody (monoclonal) (M04) is for research use only and not for use in diagnostic or therapeutic procedures.

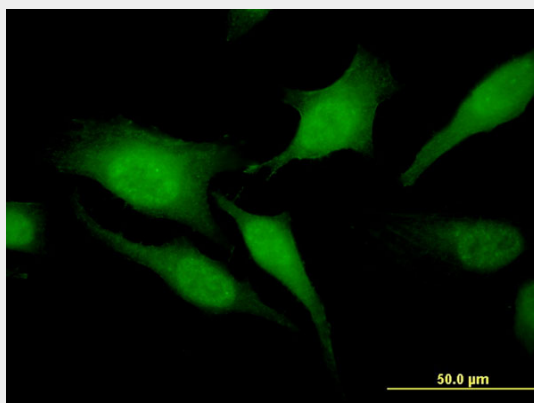
RGS20 Antibody (monoclonal) (M04) - Protocols

Provided below are standard protocols that you may find useful for product applications.

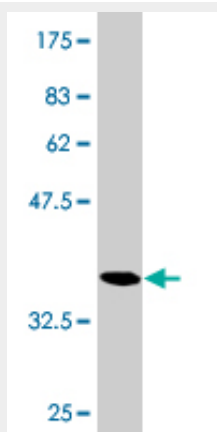
- [Western Blot](#)
- [Blocking Peptides](#)

- [Dot Blot](#)
- [Immunohistochemistry](#)
- [Immunofluorescence](#)
- [Immunoprecipitation](#)
- [Flow Cytometry](#)
- [Cell Culture](#)

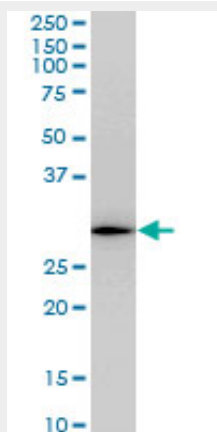
RGS20 Antibody (monoclonal) (M04) - Images



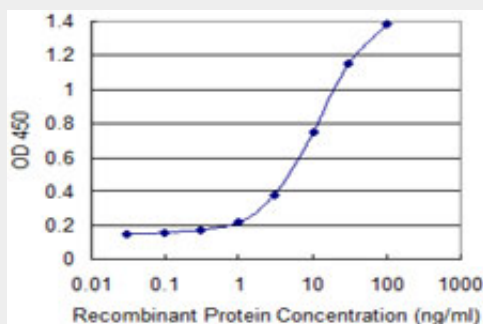
Immunofluorescence of monoclonal antibody to RGS20 on HeLa cell . [antibody concentration 10 ug/ml]



Antibody Reactive Against Recombinant Protein. Western Blot detection against Immunogen (36.63 KDa) .



RGS20 monoclonal antibody (M04), clone 3E10. Western Blot analysis of RGS20 expression in NIH/3T3 (Cat # AT3629a)



Detection limit for recombinant GST tagged RGS20 is 0.3 ng/ml as a capture antibody.

RGS20 Antibody (monoclonal) (M04) - Background

Regulator of G protein signaling (RGS) proteins are regulatory and structural components of G protein-coupled receptor complexes. RGS proteins are GTPase-activating proteins for Gi (see GNAI1; MIM 139310) and Gq (see GNAQ; MIM 600998) class G-alpha proteins. They accelerate transit through the cycle of GTP binding and hydrolysis and thereby accelerate signaling kinetics and termination.

RGS20 Antibody (monoclonal) (M04) - References

Genetic Variations in Regulator of G-Protein Signaling Genes as Susceptibility Loci for Second Primary Tumor/Recurrence in Head and Neck Squamous Cell Carcinoma. Wang J, et al. Carcinogenesis, 2010 Jul 12. PMID 20627871. Gα₁₂/i-stimulated proteosomal degradation of RGS20: a mechanism for temporal integration of Gs and Gi pathways. Pagano M, et al. Cell Signal, 2008 Jun. PMID 18407463. Identification of hypertension-susceptibility genes and pathways by a systemic multiple candidate gene approach: the millennium genome project for hypertension. Kohara K, et al. Hypertens Res, 2008 Feb. PMID 18360038. Systematic identification of SH3 domain-mediated human protein-protein interactions by peptide array target screening. Wu C, et al. Proteomics, 2007 Jun. PMID 17474147. Large-scale mapping of human protein-protein interactions by mass spectrometry. Ewing RM, et al. Mol Syst Biol, 2007. PMID 17353931.