

RGS3 Antibody (monoclonal) (M01)**Mouse monoclonal antibody raised against a full length recombinant RGS3.****Catalog # AT3630a****Specification**

RGS3 Antibody (monoclonal) (M01) - Product Information

Application	WB, IHC, IF, E
Primary Accession	P49796
Other Accession	BC018072
Reactivity	Human
Host	mouse
Clonality	Monoclonal
Isotype	IgG1 Kappa
Calculated MW	132336

RGS3 Antibody (monoclonal) (M01) - Additional Information**Gene ID** 5998**Other Names**

Regulator of G-protein signaling 3, RGP3, RGS3, RGS3

Target/Specificity

RGS3 (AAH18072, 1 a.a. ~ 192 a.a) full-length recombinant protein with GST tag. MW of the GST tag alone is 26 KDa.

Dilution

WB~~1:500~1000

IHC~~1:100~500

IF~~1:50~200

E~~N/A

Format

Clear, colorless solution in phosphate buffered saline, pH 7.2 .

Storage

Store at -20°C or lower. Aliquot to avoid repeated freezing and thawing.

Precautions

RGS3 Antibody (monoclonal) (M01) is for research use only and not for use in diagnostic or therapeutic procedures.

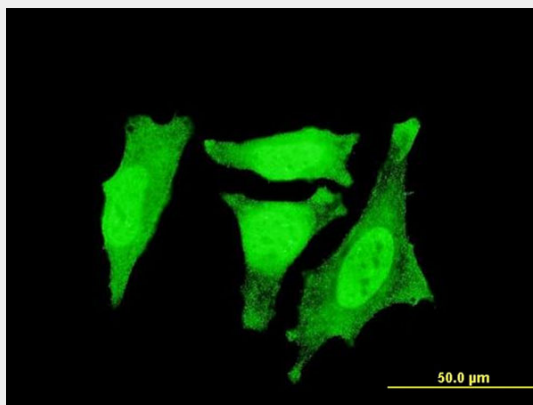
RGS3 Antibody (monoclonal) (M01) - Protocols

Provided below are standard protocols that you may find useful for product applications.

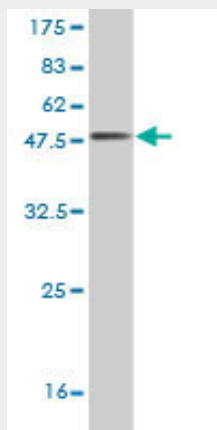
- [Western Blot](#)

- [Blocking Peptides](#)
- [Dot Blot](#)
- [Immunohistochemistry](#)
- [Immunofluorescence](#)
- [Immunoprecipitation](#)
- [Flow Cytometry](#)
- [Cell Culture](#)

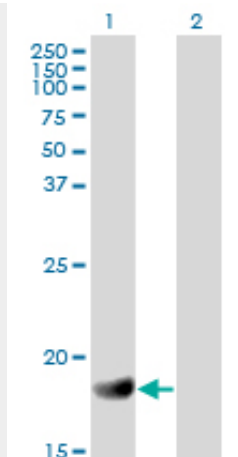
RGS3 Antibody (monoclonal) (M01) - Images



Immunofluorescence of monoclonal antibody to RGS3 on HeLa cell . [antibody concentration 10 ug/ml]



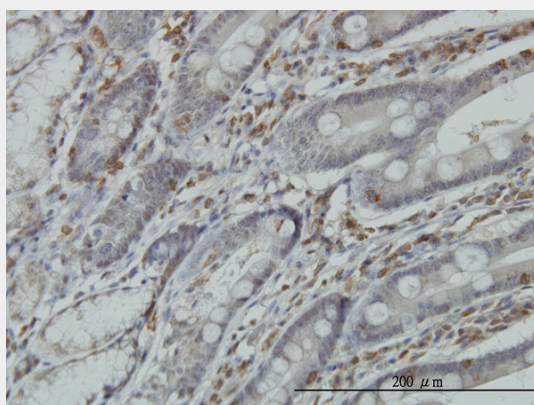
Antibody Reactive Against Recombinant Protein. Western Blot detection against Immunogen (46.86 KDa) .



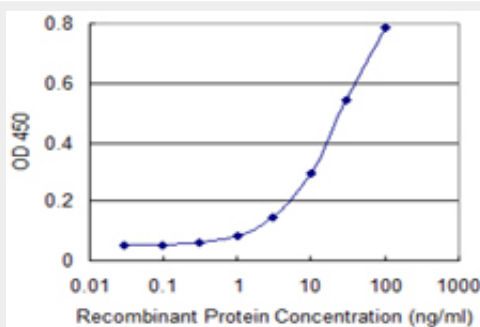
Western Blot analysis of RGS3 expression in transfected 293T cell line by RGS3 monoclonal antibody (M01), clone 1E8-C7.

Lane 1: RGS3 transfected lysate(19.5 KDa).

Lane 2: Non-transfected lysate.



Immunoperoxidase of monoclonal antibody to RGS3 on formalin-fixed paraffin-embedded human small Intestine. [antibody concentration 3 ug/ml]



Detection limit for recombinant GST tagged RGS3 is 0.3 ng/ml as a capture antibody.

RGS3 Antibody (monoclonal) (M01) - Background

This gene encodes a member of the regulator of G-protein signaling (RGS) family. This protein is a GTP-ase activating protein which inhibits G-protein mediated signal transduction. The protein is largely cytosolic, but G-protein activation leads to translocation of this protein to the plasma membrane. A nuclear form of this protein has also been described, but its sequence has not been identified. Multiple alternatively spliced transcript variants have been described for this gene but

the full-length nature of some transcripts is not yet known.

RGS3 Antibody (monoclonal) (M01) - References

Variation at the NFATC2 Locus Increases the Risk of Thiazolinedinedione-Induced Edema in the Diabetes REduction Assessment with ramipril and rosiglitazone Medication (DREAM) Study. Bailey SD, et al. Diabetes Care, 2010 Jul 13. PMID 20628086. Genetic Variations in Regulator of G-Protein Signaling Genes as Susceptibility Loci for Second Primary Tumor/Recurrence in Head and Neck Squamous Cell Carcinoma. Wang J, et al. Carcinogenesis, 2010 Jul 12. PMID 20627871. 14-3-3 protein interacts with and affects the structure of RGS domain of regulator of G protein signaling 3 (RGS3). Rezabkova L, et al. J Struct Biol, 2010 Jun. PMID 20347994. Gene-centric association signals for lipids and apolipoproteins identified via the HumanCVD BeadChip. Talmud PJ, et al. Am J Hum Genet, 2009 Nov. PMID 19913121. Genomic assessment of follicular marker genes as pregnancy predictors for human IVF. Hamel M, et al. Mol Hum Reprod, 2010 Feb. PMID 19778949.