

RGS4 Antibody (monoclonal) (M01)**Mouse monoclonal antibody raised against a full length recombinant RGS4.****Catalog # AT3631a****Specification**

RGS4 Antibody (monoclonal) (M01) - Product Information

Application	WB, E
Primary Accession	P49798
Other Accession	BC051869
Reactivity	Human
Host	mouse
Clonality	Monoclonal
Isotype	IgG2b Kappa
Calculated MW	23256

RGS4 Antibody (monoclonal) (M01) - Additional Information**Gene ID** 5999**Other Names**

Regulator of G-protein signaling 4, RGP4, RGS4, RGS4

Target/Specificity

RGS4 (AAH51869, 1 a.a. ~ 205 a.a) full-length recombinant protein with GST tag. MW of the GST tag alone is 26 KDa.

Dilution

WB~~1:500~1000

E~~N/A

Format

Clear, colorless solution in phosphate buffered saline, pH 7.2 .

Storage

Store at -20°C or lower. Aliquot to avoid repeated freezing and thawing.

Precautions

RGS4 Antibody (monoclonal) (M01) is for research use only and not for use in diagnostic or therapeutic procedures.

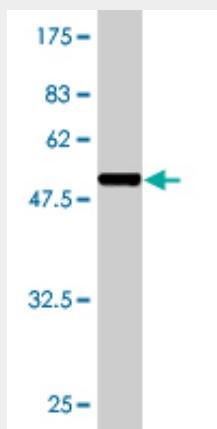
RGS4 Antibody (monoclonal) (M01) - Protocols

Provided below are standard protocols that you may find useful for product applications.

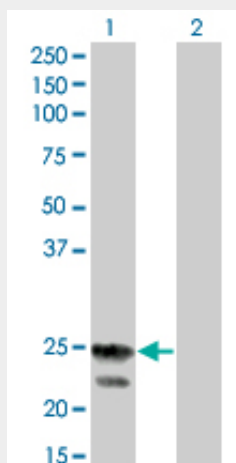
- [Western Blot](#)
- [Blocking Peptides](#)
- [Dot Blot](#)

- [Immunohistochemistry](#)
- [Immunofluorescence](#)
- [Immunoprecipitation](#)
- [Flow Cytometry](#)
- [Cell Culture](#)

RGS4 Antibody (monoclonal) (M01) - Images



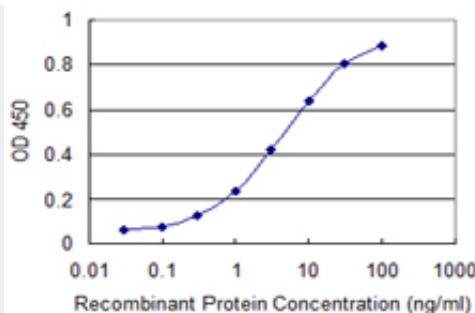
Antibody Reactive Against Recombinant Protein. Western Blot detection against Immunogen (48.29 kDa) .



Western Blot analysis of RGS4 expression in transfected 293T cell line by RGS4 monoclonal antibody (M01), clone 2B2.

Lane 1: RGS4 transfected lysate(23.3 kDa).

Lane 2: Non-transfected lysate.



Detection limit for recombinant GST tagged RGS4 is 0.1 ng/ml as a capture antibody.

RGS4 Antibody (monoclonal) (M01) - Background

Regulator of G protein signaling (RGS) family members are regulatory molecules that act as GTPase activating proteins (GAPs) for G alpha subunits of heterotrimeric G proteins. RGS proteins are able to deactivate G protein subunits of the Gi alpha, Go alpha and Gq alpha subtypes. They drive G proteins into their inactive GDP-bound forms. Regulator of G protein signaling 4 belongs to this family. All RGS proteins share a conserved 120-amino acid sequence termed the RGS domain. Regulator of G protein signaling 4 protein is 37% identical to RGS1 and 97% identical to rat Rgs4. This protein negatively regulate signaling upstream or at the level of the heterotrimeric G protein and is localized in the cytoplasm. Alternatively spliced transcript variants have been found for this gene.

RGS4 Antibody (monoclonal) (M01) - References

Variation at the NFATC2 Locus Increases the Risk of Thiazolinedinedione-Induced Edema in the Diabetes REduction Assessment with ramipril and rosiglitazone Medication (DREAM) Study. Bailey SD, et al. Diabetes Care, 2010 Jul 13. PMID 20628086. Genetic Variations in Regulator of G-Protein Signaling Genes as Susceptibility Loci for Second Primary Tumor/Recurrence in Head and Neck Squamous Cell Carcinoma. Wang J, et al. Carcinogenesis, 2010 Jul 12. PMID 20627871. Association of polymorphisms in RGS4 and expression of RGS transcripts in the brains of human alcoholics. Ho AM, et al. Brain Res, 2010 Jun 22. PMID 20430014. Association study between RGS4 and bipolar disorder in the Chinese Han population. Li Y, et al. Psychiatr Genet, 2010 Jun. PMID 20414142. Association study of NRG1, DTNBP1, RGS4, G72/G30, and PIP5K2A with schizophrenia and symptom severity in a Hungarian sample. R?thelyi JM, et al. Am J Med Genet B Neuropsychiatr Genet, 2010 Apr 5. PMID 19937977.