

**RHOC Antibody (monoclonal) (M06)****Mouse monoclonal antibody raised against a full-length recombinant RHOC.****Catalog # AT3637a****Specification**

---

**RHOC Antibody (monoclonal) (M06) - Product Information**

|                   |                          |
|-------------------|--------------------------|
| Application       | IF, WB, E                |
| Primary Accession | <a href="#">P08134</a>   |
| Other Accession   | <a href="#">BC007245</a> |
| Reactivity        | Human, Mouse, Rat        |
| Host              | mouse                    |
| Clonality         | Monoclonal               |
| Isotype           | IgG2a Kappa              |
| Calculated MW     | 22006                    |

**RHOC Antibody (monoclonal) (M06) - Additional Information****Gene ID** 389**Other Names**

Rho-related GTP-binding protein RhoC, Rho cDNA clone 9, h9, RHOC, ARH9, ARHC

**Target/Specificity**

RHOC (AAH07245, 1 a.a. ~ 193 a.a) full-length recombinant protein with GST tag. MW of the GST tag alone is 26 KDa.

**Dilution**

WB~~1:500~1000

**Format**

Clear, colorless solution in phosphate buffered saline, pH 7.2 .

**Storage**

Store at -20°C or lower. Aliquot to avoid repeated freezing and thawing.

**Precautions**

RHOC Antibody (monoclonal) (M06) is for research use only and not for use in diagnostic or therapeutic procedures.

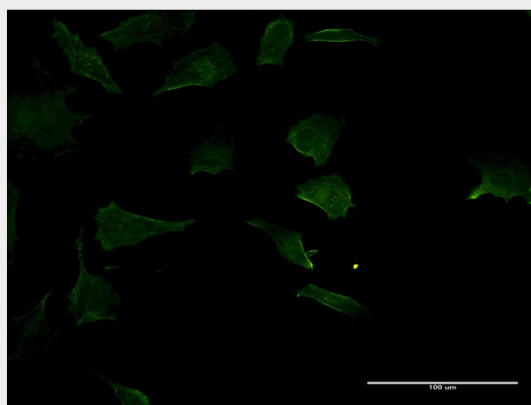
**RHOC Antibody (monoclonal) (M06) - Protocols**

Provided below are standard protocols that you may find useful for product applications.

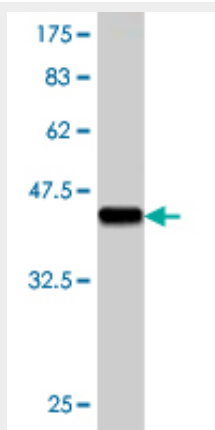
- [Western Blot](#)
- [Blocking Peptides](#)
- [Dot Blot](#)
- [Immunohistochemistry](#)

- [Immunofluorescence](#)
- [Immunoprecipitation](#)
- [Flow Cytometry](#)
- [Cell Culture](#)

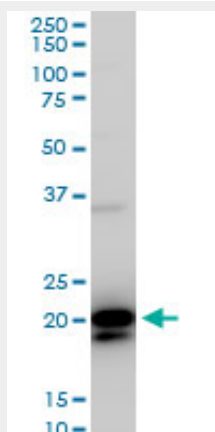
## RHOC Antibody (monoclonal) (M06) - Images



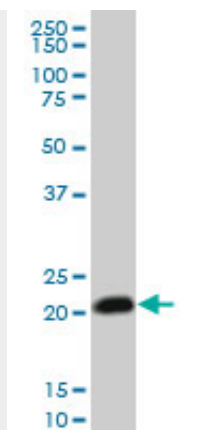
Immunofluorescence of monoclonal antibody to RHOC on HeLa cell . [antibody concentration 10 ug/ml]



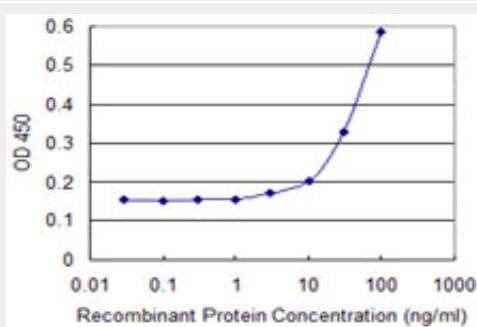
Antibody Reactive Against Recombinant Protein. Western Blot detection against Immunogen (46.97 KDa) .



RHOC monoclonal antibody (M06), clone 1B7. Western Blot analysis of RHOC expression in PC-12 (Cat # AT3637a )



RHOC monoclonal antibody (M06), clone 1B7. Western Blot analysis of RHOC expression in NIH/3T3 (Cat # AT3637a)



Detection limit for recombinant GST tagged RHOC is 3 ng/ml as a capture antibody.

### **RHOC Antibody (monoclonal) (M06) - Background**

This gene encodes a member of the Rho family of small GTPases, which cycle between inactive GDP-bound and active GTP-bound states and function as molecular switches in signal transduction cascades. Rho proteins promote reorganization of the actin cytoskeleton and regulate cell shape, attachment, and motility. The protein encoded by this gene is prenylated at its C-terminus, and localizes to the cytoplasm and plasma membrane. It is thought to be important in cell locomotion. Overexpression of this gene is associated with tumor cell proliferation and metastasis. Multiple alternatively spliced variants, encoding the same protein, have been identified.

### **RHOC Antibody (monoclonal) (M06) - References**

1. Rhos and Rho kinases in the rat prostate: their possible functional roles and distributions. Saito M, Ohmasa F, Shomori K, Dimitriadis F, Ohiwa H, Shimizu S, Tsounapi P, Kinoshita Y, Satoh K. Mol Cell Biochem. 2011 Jul 1. [Epub ahead of print]