

RLN1 Antibody (monoclonal) (M01)**Mouse monoclonal antibody raised against a full length recombinant RLN1.****Catalog # AT3651a****Specification**

RLN1 Antibody (monoclonal) (M01) - Product Information

Application	WB, IP, E
Primary Accession	P04808
Other Accession	BC005956
Reactivity	Human
Host	mouse
Clonality	Monoclonal
Isotype	IgG2a Kappa
Calculated MW	21146

RLN1 Antibody (monoclonal) (M01) - Additional Information**Gene ID** 6013**Other Names**

Prorelaxin H1, Relaxin B chain, Relaxin A chain, RLN1

Target/Specificity

RLN1 (AAH05956.1, 27 a.a. ~ 185 a.a) full-length recombinant protein with GST tag. MW of the GST tag alone is 26 KDa.

Dilution

WB~~1:500~1000

IP~~N/A

E~~N/A

Format

Clear, colorless solution in phosphate buffered saline, pH 7.2 .

Storage

Store at -20°C or lower. Aliquot to avoid repeated freezing and thawing.

Precautions

RLN1 Antibody (monoclonal) (M01) is for research use only and not for use in diagnostic or therapeutic procedures.

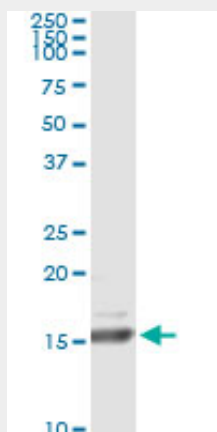
RLN1 Antibody (monoclonal) (M01) - Protocols

Provided below are standard protocols that you may find useful for product applications.

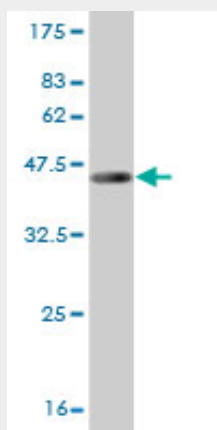
- [Western Blot](#)
- [Blocking Peptides](#)

- [Dot Blot](#)
- [Immunohistochemistry](#)
- [Immunofluorescence](#)
- [Immunoprecipitation](#)
- [Flow Cytometry](#)
- [Cell Culture](#)

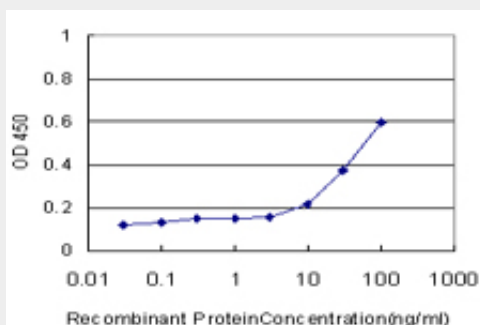
RLN1 Antibody (monoclonal) (M01) - Images



Immunoprecipitation of RLN1 transfected lysate using anti-RLN1 monoclonal antibody and Protein A Magnetic Bead ([U0007](#)), and immunoblotted with RLN1 MaxPab rabbit polyclonal antibody.



Antibody Reactive Against Recombinant Protein. Western Blot detection against Immunogen (43.12 KDa) .



Detection limit for recombinant GST tagged RLN1 is approximately 10ng/ml as a capture antibody.

RLN1 Antibody (monoclonal) (M01) - Background

Relaxins are known endocrine and autocrine/paracrine hormones, belonging to the insulin gene superfamily. In the human there are three non-allelic relaxin genes, RLN1, RLN2 and RLN3. RLN1 and RLN2 share high sequence homology. This encoded protein is synthesized as a single-chain polypeptide but the active form consists of an A chain and a B chain linked by disulfide bonds; however, their exact cleavage sites have not been described. Relaxin is produced by the ovary, and targets the mammalian reproductive system to ripen the cervix, elongate the pubic symphysis and inhibit uterine contraction. It may have additional roles in enhancing sperm motility, regulating blood pressure, controlling heart rate and releasing oxytocin and vasopressin. This gene has multiple polyadenylation sites. There are multiple alternatively spliced transcript variants described for this gene but their full length nature is not known yet.

RLN1 Antibody (monoclonal) (M01) - References

Relaxin enhances S100A4 and promotes growth of human thyroid carcinoma cell xenografts. Radestock Y, et al. Mol Cancer Res, 2010 Apr. PMID 20332215. New genetic associations detected in a host response study to hepatitis B vaccine. Davila S, et al. Genes Immun, 2010 Apr. PMID 20237496. Polymorphisms in the promoter region of relaxin-2 and preterm birth: involvement of relaxin in the etiology of preterm birth. Vogel I, et al. In Vivo, 2009 Nov-Dec. PMID 20023247. Relaxin stimulates osteoclast differentiation and activation. Ferlin A, et al. Bone, 2010 Feb. PMID 19833242. Serum relaxin levels are reduced in pregnant women with a history of recurrent miscarriage, and correlate with maternal uterine artery Doppler indices in first trimester. Anumba DO, et al. Eur J Obstet Gynecol Reprod Biol, 2009 Nov. PMID 19695764.