

**RND2 Antibody (monoclonal) (M01)****Mouse monoclonal antibody raised against a full length recombinant RND2.****Catalog # AT3655a****Specification**

---

**RND2 Antibody (monoclonal) (M01) - Product Information**

Application	<b>E</b>
Primary Accession	<a href="#">P52198</a>
Other Accession	<a href="#">BC018096</a>
Reactivity	<b>Human</b>
Host	<b>mouse</b>
Clonality	<b>Monoclonal</b>
Isotype	<b>IgG2b Kappa</b>
Calculated MW	<b>25369</b>

**RND2 Antibody (monoclonal) (M01) - Additional Information****Gene ID** 8153**Other Names**

Rho-related GTP-binding protein RhoN, Rho family GTPase 2, Rho-related GTP-binding protein Rho7, Rnd2, RND2, ARHN, RHO7

**Target/Specificity**

RND2 (AAH18096, 1 a.a. ~ 169 a.a) full-length recombinant protein with GST tag. MW of the GST tag alone is 26 KDa.

**Dilution**

E~~N/A

**Format**

Clear, colorless solution in phosphate buffered saline, pH 7.2 .

**Storage**

Store at -20°C or lower. Aliquot to avoid repeated freezing and thawing.

**Precautions**

RND2 Antibody (monoclonal) (M01) is for research use only and not for use in diagnostic or therapeutic procedures.

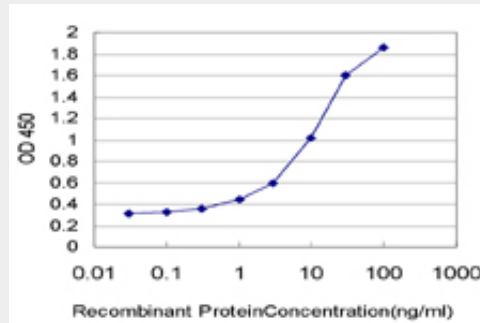
**RND2 Antibody (monoclonal) (M01) - Protocols**

Provided below are standard protocols that you may find useful for product applications.

- [Western Blot](#)
- [Blocking Peptides](#)
- [Dot Blot](#)

- [Immunohistochemistry](#)
- [Immunofluorescence](#)
- [Immunoprecipitation](#)
- [Flow Cytometry](#)
- [Cell Culture](#)

#### **RND2 Antibody (monoclonal) (M01) - Images**



Detection limit for recombinant GST tagged RND2 is approximately 0.1ng/ml as a capture antibody.

#### **RND2 Antibody (monoclonal) (M01) - Background**

This gene encodes a member of the Rho GTPase family, whose members play a key role in the regulation of actin cytoskeleton organization in response to extracellular growth factors. This particular family member has been implicated in the regulation of neuronal morphology and endosomal trafficking. The gene localizes to chromosome 17 and is the centromeric neighbor of the breast-ovarian cancer susceptibility gene BRCA1. [provided by RefSeq]