

ROBO2 Antibody (monoclonal) (M01)**Mouse monoclonal antibody raised against a partial recombinant ROBO2.****Catalog # AT3685a****Specification**

ROBO2 Antibody (monoclonal) (M01) - Product Information

Application	WB, E
Primary Accession	O9HCK4
Other Accession	NM_002942
Reactivity	Human
Host	mouse
Clonality	Monoclonal
Isotype	IgG2b Kappa
Calculated MW	151200

ROBO2 Antibody (monoclonal) (M01) - Additional Information**Gene ID** 6092**Other Names**

Roundabout homolog 2, ROBO2, KIAA1568

Target/Specificity

ROBO2 (NP_002933, 441 a.a. ~ 540 a.a) partial recombinant protein with GST tag. MW of the GST tag alone is 26 KDa.

Dilution

WB~~1:500~1000

E~~N/A

Format

Clear, colorless solution in phosphate buffered saline, pH 7.2 .

Storage

Store at -20°C or lower. Aliquot to avoid repeated freezing and thawing.

Precautions

ROBO2 Antibody (monoclonal) (M01) is for research use only and not for use in diagnostic or therapeutic procedures.

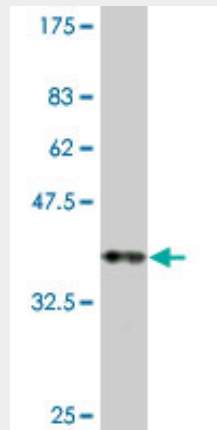
ROBO2 Antibody (monoclonal) (M01) - Protocols

Provided below are standard protocols that you may find useful for product applications.

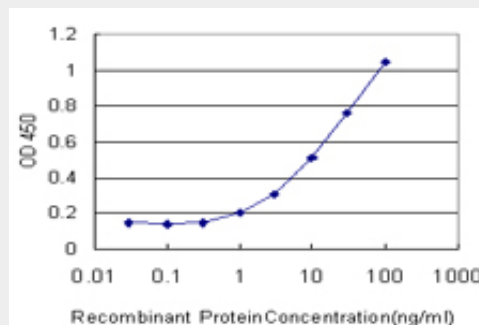
- [Western Blot](#)
- [Blocking Peptides](#)
- [Dot Blot](#)

- [Immunohistochemistry](#)
- [Immunofluorescence](#)
- [Immunoprecipitation](#)
- [Flow Cytometry](#)
- [Cell Culture](#)

ROBO2 Antibody (monoclonal) (M01) - Images



Antibody Reactive Against Recombinant Protein. Western Blot detection against Immunogen (36.74 kDa) .



Detection limit for recombinant GST tagged ROBO2 is approximately 1ng/ml as a capture antibody.

ROBO2 Antibody (monoclonal) (M01) - Background

This gene belongs to the ROBO family, part of the immunoglobulin superfamily proteins that are highly conserved from fly to human. The encoded protein is a receptor for SLIT2, molecules known to function in axon guidance and cell migration. Defects in this gene are the cause of vesicoureteral reflux type 2. Alternatively spliced transcript variants encoding different isoforms have been described for this gene.

ROBO2 Antibody (monoclonal) (M01) - References

Personalized smoking cessation: interactions between nicotine dose, dependence and quit-success genotype score. Rose JE, et al. Mol Med, 2010 Jul-Aug. PMID 20379614. In search of genes associated with risk for psychopathic tendencies in children: a two-stage genome-wide association study of pooled DNA. Viding E, et al. J Child Psychol Psychiatry, 2010 Jul. PMID 20345837. Human variation in alcohol response is influenced by variation in neuronal signaling genes. Joslyn G, et al. Alcohol Clin Exp Res, 2010 May. PMID 20201926. Association of polymorphisms in the SLIT2 axonal guidance gene with anger in suicide attempters. Sokolowski M, et al. Mol Psychiatry, 2010 Jan. PMID 20029409. Whole-genome linkage and association scan in primary, nonsyndromic vesicoureteric

reflux. Cordell HJ, et al. J Am Soc Nephrol, 2010 Jan. PMID 19959718.