

**ROCK2 Antibody (monoclonal) (M01)****Mouse monoclonal antibody raised against a partial recombinant ROCK2.****Catalog # AT3687a****Specification**

---

**ROCK2 Antibody (monoclonal) (M01) - Product Information**

Application	WB, IF
Primary Accession	<a href="#">O75116</a>
Other Accession	<a href="#">NM_004850</a>
Reactivity	Human
Host	mouse
Clonality	Monoclonal
Isotype	IgG2b Kappa
Calculated MW	160900

**ROCK2 Antibody (monoclonal) (M01) - Additional Information****Gene ID** 9475**Other Names**

Rho-associated protein kinase 2, Rho kinase 2, Rho-associated, coiled-coil-containing protein kinase 2, Rho-associated, coiled-coil-containing protein kinase II, ROCK-II, p164 ROCK-2, ROCK2, KIAA0619

**Target/Specificity**

ROCK2 (NP\_004841, 1279 a.a. ~ 1388 a.a) partial recombinant protein with GST tag. MW of the GST tag alone is 26 KDa.

**Dilution**

WB~~1:500~1000

IF~~1:50~200

**Format**

Clear, colorless solution in phosphate buffered saline, pH 7.2 .

**Storage**

Store at -20°C or lower. Aliquot to avoid repeated freezing and thawing.

**Precautions**

ROCK2 Antibody (monoclonal) (M01) is for research use only and not for use in diagnostic or therapeutic procedures.

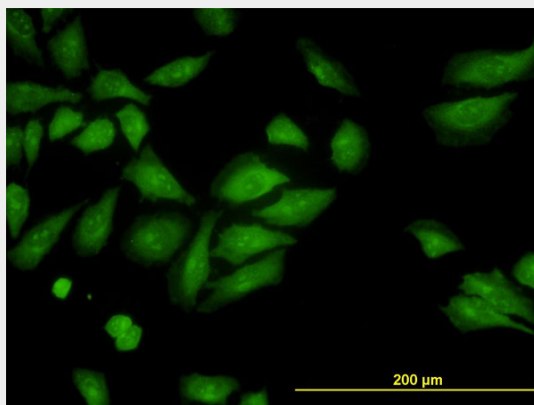
**ROCK2 Antibody (monoclonal) (M01) - Protocols**

Provided below are standard protocols that you may find useful for product applications.

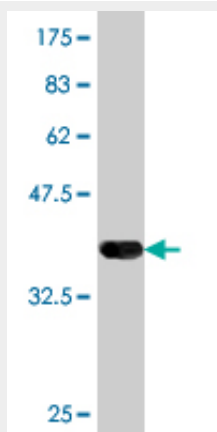
- [Western Blot](#)

- [Blocking Peptides](#)
- [Dot Blot](#)
- [Immunohistochemistry](#)
- [Immunofluorescence](#)
- [Immunoprecipitation](#)
- [Flow Cytometry](#)
- [Cell Culture](#)

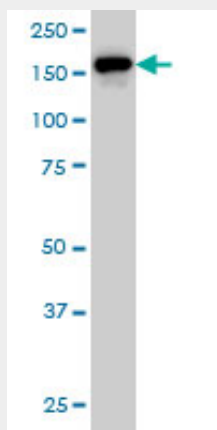
### ROCK2 Antibody (monoclonal) (M01) - Images



Immunofluorescence of monoclonal antibody to ROCK2 on HeLa cell. [antibody concentration 10 ug/ml]



Antibody Reactive Against Recombinant Protein. Western Blot detection against Immunogen (37.84 KDa) .



ROCK2 monoclonal antibody (M01), clone 2A4 Western Blot analysis of ROCK2 expression in HeLa (Cat # AT3687a)

#### **ROCK2 Antibody (monoclonal) (M01) - Background**

The protein encoded by this gene is a serine/threonine kinase that regulates cytokinesis, smooth muscle contraction, the formation of actin stress fibers and focal adhesions, and the activation of the c-fos serum response element. This protein, which is an isozyme of ROCK1 is a target for the small GTPase Rho.

#### **ROCK2 Antibody (monoclonal) (M01) - References**

Variation at the NFATC2 Locus Increases the Risk of Thiazolinedinedione-Induced Edema in the Diabetes REduction Assessment with ramipril and rosiglitazone Medication (DREAM) Study. Bailey SD, et al. Diabetes Care, 2010 Jul 13. PMID 20628086. Vascular endothelial growth factor C promotes cervical cancer metastasis via up-regulation and activation of RhoA/ROCK-2/moesin cascade. He M, et al. BMC Cancer, 2010 Apr 29. PMID 20429915. Genetic risk factors for hepatopulmonary syndrome in patients with advanced liver disease. Roberts KE, et al. Gastroenterology, 2010 Jul. PMID 20346360. Downregulation of the Rho GTPase signaling pathway is involved in the microRNA-138-mediated inhibition of cell migration and invasion in tongue squamous cell carcinoma. Jiang L, et al. Int J Cancer, 2010 Aug 1. PMID 20232393. ROCK2 associates with lectin-like oxidized LDL receptor-1 and mediates oxidized LDL-induced IL-8 production. Mattaliano MD, et al. Am J Physiol Cell Physiol, 2010 May. PMID 20181930.