

**ROCK2 Antibody (monoclonal) (M02)****Mouse monoclonal antibody raised against a partial recombinant ROCK2.****Catalog # AT3688a****Specification**

---

**ROCK2 Antibody (monoclonal) (M02) - Product Information**

Application	WB, IHC, IF, E
Primary Accession	<a href="#">O75116</a>
Other Accession	<a href="#">NM_004850</a>
Reactivity	Human
Host	mouse
Clonality	Monoclonal
Isotype	IgG1 Kappa
Calculated MW	160900

**ROCK2 Antibody (monoclonal) (M02) - Additional Information****Gene ID** 9475**Other Names**

Rho-associated protein kinase 2, Rho kinase 2, Rho-associated, coiled-coil-containing protein kinase 2, Rho-associated, coiled-coil-containing protein kinase II, ROCK-II, p164 ROCK-2, ROCK2, KIAA0619

**Target/Specificity**

ROCK2 (NP\_004841, 1279 a.a. ~ 1388 a.a) partial recombinant protein with GST tag. MW of the GST tag alone is 26 KDa.

**Dilution**

WB~~1:500~1000

IHC~~1:100~500

IF~~1:50~200

E~~N/A

**Format**

Clear, colorless solution in phosphate buffered saline, pH 7.2 .

**Storage**

Store at -20°C or lower. Aliquot to avoid repeated freezing and thawing.

**Precautions**

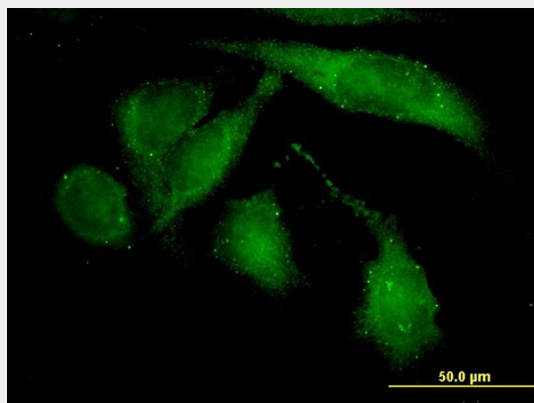
ROCK2 Antibody (monoclonal) (M02) is for research use only and not for use in diagnostic or therapeutic procedures.

**ROCK2 Antibody (monoclonal) (M02) - Protocols**

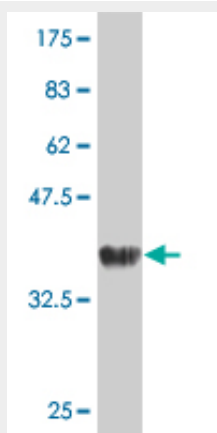
Provided below are standard protocols that you may find useful for product applications.

- [Western Blot](#)
- [Blocking Peptides](#)
- [Dot Blot](#)
- [Immunohistochemistry](#)
- [Immunofluorescence](#)
- [Immunoprecipitation](#)
- [Flow Cytometry](#)
- [Cell Culture](#)

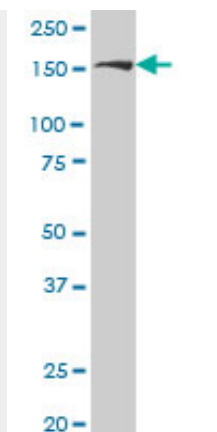
#### ROCK2 Antibody (monoclonal) (M02) - Images



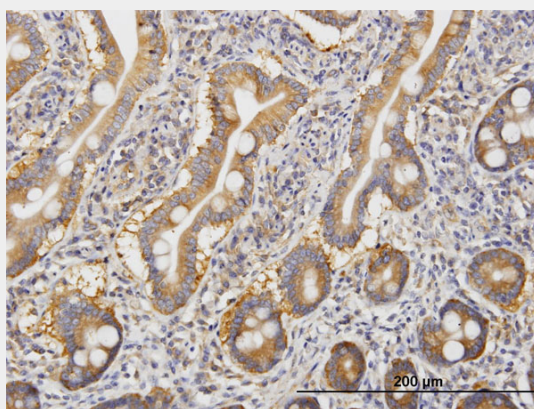
Immunofluorescence of monoclonal antibody to ROCK2 on HeLa cell. [antibody concentration 30 ug/ml]



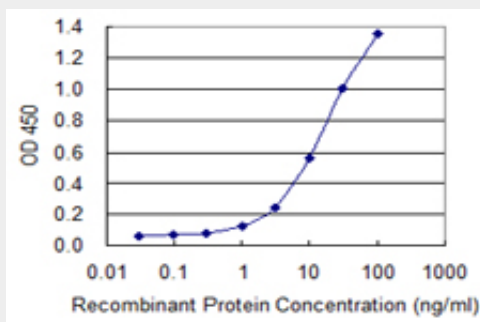
Antibody Reactive Against Recombinant Protein. Western Blot detection against Immunogen (37.84 KDa) .



ROCK2 monoclonal antibody (M02), clone 1E12 Western Blot analysis of ROCK2 expression in Hela S3 NE (Cat # AT3688a)



Immunoperoxidase of monoclonal antibody to ROCK2 on formalin-fixed paraffin-embedded human small Intestine. [antibody concentration 1.5 ug/ml]



Detection limit for recombinant GST tagged ROCK2 is 0.3 ng/ml as a capture antibody.

### ROCK2 Antibody (monoclonal) (M02) - Background

The protein encoded by this gene is a serine/threonine kinase that regulates cytokinesis, smooth muscle contraction, the formation of actin stress fibers and focal adhesions, and the activation of the c-fos serum response element. This protein, which is an isozyme of ROCK1 is a target for the small GTPase Rho.

### ROCK2 Antibody (monoclonal) (M02) - References

1. Vascular hyperpermeability in response to inflammatory mustard oil is mediated by Rho kinase in mice systemically exposed to arsenic. Chen SC, Liu CC, Huang SY, Chiou SJ. Microvasc Res. 2011 Jun 16. [Epub ahead of print]