

**RP6-213H19.1 Antibody (monoclonal) (M01)**

**Mouse monoclonal antibody raised against a full length recombinant RP6-213H19.1.  
Catalog # AT3697a**

**Specification**

---

**RP6-213H19.1 Antibody (monoclonal) (M01) - Product Information**

Application	WB, IF, E
Primary Accession	<a href="#">O9P289</a>
Other Accession	<a href="#">BC017213</a>
Reactivity	Human
Host	mouse
Clonality	Monoclonal
Isotype	IgG2b Kappa
Calculated MW	46529

**RP6-213H19.1 Antibody (monoclonal) (M01) - Additional Information**

**Gene ID** 51765

**Other Names**

Serine/threonine-protein kinase 26, MST3 and SOK1-related kinase, Mammalian STE20-like protein kinase 4, MST-4, STE20-like kinase MST4, Serine/threonine-protein kinase MASK, STK26 ([http://www.genenames.org/cgi-bin/gene\\_symbol\\_report?hgnc\\_id=18174](http://www.genenames.org/cgi-bin/gene_symbol_report?hgnc_id=18174))  
HGNC:18174

**Target/Specificity**

RP6-213H19.1 (AAH17213, 1 a.a. ~ 137 a.a) full-length recombinant protein with GST tag. MW of the GST tag alone is 26 KDa.

**Dilution**

WB~~1:500~1000  
IF~~1:50~200  
E~~N/A

**Format**

Clear, colorless solution in phosphate buffered saline, pH 7.2 .

**Storage**

Store at -20°C or lower. Aliquot to avoid repeated freezing and thawing.

**Precautions**

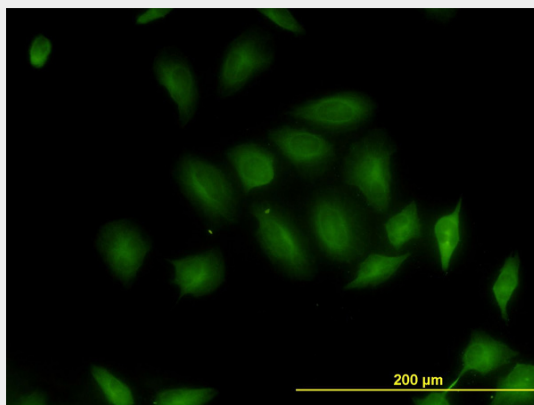
RP6-213H19.1 Antibody (monoclonal) (M01) is for research use only and not for use in diagnostic or therapeutic procedures.

**RP6-213H19.1 Antibody (monoclonal) (M01) - Protocols**

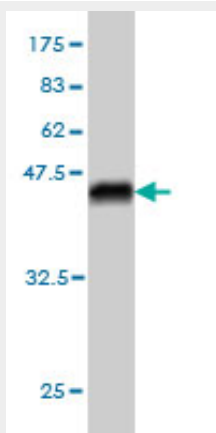
Provided below are standard protocols that you may find useful for product applications.

- [Western Blot](#)
- [Blocking Peptides](#)
- [Dot Blot](#)
- [Immunohistochemistry](#)
- [Immunofluorescence](#)
- [Immunoprecipitation](#)
- [Flow Cytometry](#)
- [Cell Culture](#)

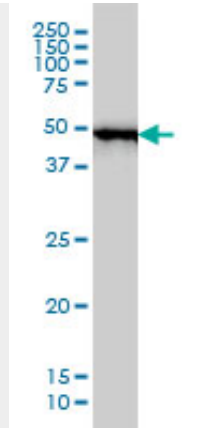
#### RP6-213H19.1 Antibody (monoclonal) (M01) - Images



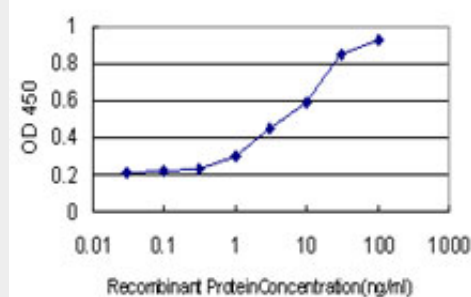
Immunofluorescence of monoclonal antibody to RP6-213H19.1 on HeLa cell. [antibody concentration 10 ug/ml]



Antibody Reactive Against Recombinant Protein. Western Blot detection against Immunogen (40.81 KDa) .



RP6-213H19.1 monoclonal antibody (M01), clone 2G6 Western Blot analysis of RP6-213H19.1 expression in MCF-7 (Cat # AT3697a)



Detection limit for recombinant GST tagged RP6-213H19.1 is approximately 0.3ng/ml as a capture antibody.

### RP6-213H19.1 Antibody (monoclonal) (M01) - Background

The product of this gene is a member of the GCK group III family of kinases, which are a subset of the Ste20-like kinases. The encoded protein contains an amino-terminal kinase domain, and a carboxy-terminal regulatory domain that mediates homodimerization. The protein kinase localizes to the Golgi apparatus and is specifically activated by binding to the Golgi matrix protein GM130. It is also cleaved by caspase-3 in vitro, and may function in the apoptotic pathway. Several alternatively spliced transcript variants of this gene have been described, but the full-length nature of some of these variants has not been determined. [provided by RefSeq]