

RP6-213H19.1 Antibody (monoclonal) (M02)**Mouse monoclonal antibody raised against a partial recombinant RP6-213H19.1.****Catalog # AT3698a****Specification**

RP6-213H19.1 Antibody (monoclonal) (M02) - Product Information

Application	WB, IF, E
Primary Accession	O9P289
Other Accession	NM_016542
Reactivity	Human, Rat
Host	mouse
Clonality	Monoclonal
Isotype	IgG2a Kappa
Calculated MW	46529

RP6-213H19.1 Antibody (monoclonal) (M02) - Additional Information**Gene ID** 51765**Other Names**

Serine/threonine-protein kinase 26, MST3 and SOK1-related kinase, Mammalian STE20-like protein kinase 4, MST-4, STE20-like kinase MST4, Serine/threonine-protein kinase MASK, STK26 (http://www.genenames.org/cgi-bin/gene_symbol_report?hgnc_id=18174)
target="_blank">HGNC:18174)

Target/Specificity

RP6-213H19.1 (NP_057626, 331 a.a. ~ 415 a.a) partial recombinant protein with GST tag. MW of the GST tag alone is 26 KDa.

Dilution

WB~~1:500~1000

IF~~1:50~200

E~~N/A

Format

Clear, colorless solution in phosphate buffered saline, pH 7.2 .

Storage

Store at -20°C or lower. Aliquot to avoid repeated freezing and thawing.

Precautions

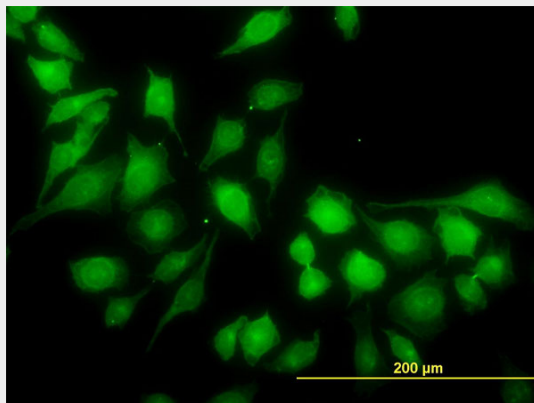
RP6-213H19.1 Antibody (monoclonal) (M02) is for research use only and not for use in diagnostic or therapeutic procedures.

RP6-213H19.1 Antibody (monoclonal) (M02) - Protocols

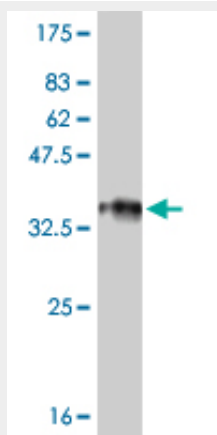
Provided below are standard protocols that you may find useful for product applications.

- [Western Blot](#)
- [Blocking Peptides](#)
- [Dot Blot](#)
- [Immunohistochemistry](#)
- [Immunofluorescence](#)
- [Immunoprecipitation](#)
- [Flow Cytometry](#)
- [Cell Culture](#)

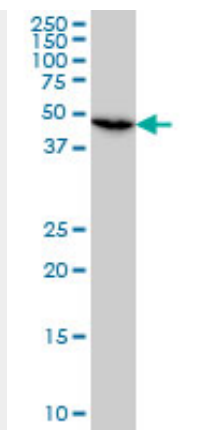
RP6-213H19.1 Antibody (monoclonal) (M02) - Images



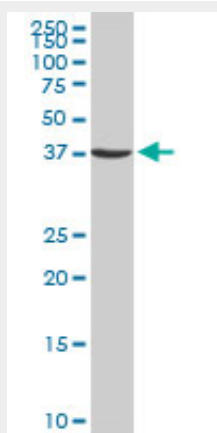
Immunofluorescence of monoclonal antibody to RP6-213H19.1 on HeLa cell. [antibody concentration 20 ug/ml]



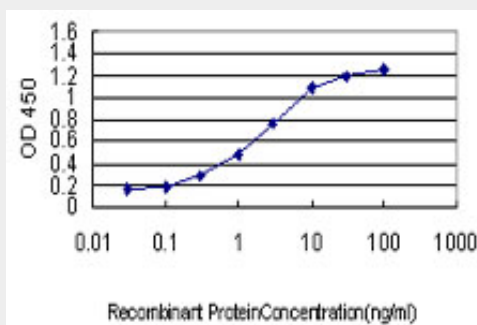
Antibody Reactive Against Recombinant Protein. Western Blot detection against Immunogen (35.09 KDa) .



RP6-213H19.1 monoclonal antibody (M02), clone 7H4 Western Blot analysis of RP6-213H19.1 expression in HeLa (Cat # AT3698a)



RP6-213H19.1 monoclonal antibody (M02), clone 7H4. Western Blot analysis of RP6-213H19.1 expression in PC-12 (Cat # AT3698a)



Detection limit for recombinant GST tagged RP6-213H19.1 is approximately 0.1ng/ml as a capture antibody.

RP6-213H19.1 Antibody (monoclonal) (M02) - Background

The product of this gene is a member of the GCK group III family of kinases, which are a subset of the Ste20-like kinases. The encoded protein contains an amino-terminal kinase domain, and a carboxy-terminal regulatory domain that mediates homodimerization. The protein kinase localizes to the Golgi apparatus and is specifically activated by binding to the Golgi matrix protein GM130. It is also cleaved by caspase-3 in vitro, and may function in the apoptotic pathway. Several alternatively spliced transcript variants of this gene have been described, but the full-length nature of some of these variants has not been determined.

RP6-213H19.1 Antibody (monoclonal) (M02) - References

Mst4 and Ezrin induce brush borders downstream of the Lkb1/Strad/Mo25 polarization complex. ten Klooster JP, et al. Dev Cell, 2009 Apr. PMID 19386264. A PP2A phosphatase high density interaction network identifies a novel striatin-interacting phosphatase and kinase complex linked to the cerebral cavernous malformation 3 (CCM3) protein. Goudreault M, et al. Mol Cell Proteomics, 2009 Jan. PMID 18782753. PDCD10 interacts with Ste20-related kinase MST4 to promote cell growth and transformation via modulation of the ERK pathway. Ma X, et al. Mol Biol Cell, 2007 Jun. PMID 17360971. Diversification of transcriptional modulation: large-scale identification and characterization of putative alternative promoters of human genes. Kimura K, et al. Genome Res, 2006 Jan. PMID 16344560. The DNA sequence of the human X chromosome. Ross MT, et al. Nature, 2005 Mar 17. PMID 15772651.