

RPL39L Antibody (monoclonal) (M01)

Mouse monoclonal antibody raised against a full length recombinant RPL39L.

Catalog # AT3708a

Specification

RPL39L Antibody (monoclonal) (M01) - Product Information

Application	WB, IHC, E
Primary Accession	Q96EH5
Other Accession	BC012328
Reactivity	Human
Host	mouse
Clonality	Monoclonal
Isotype	IgG1 kappa
Calculated MW	6293

RPL39L Antibody (monoclonal) (M01) - Additional Information

Gene ID 116832

Other Names

60S ribosomal protein L39-like, 60S ribosomal protein L39-2, RPL39L, RPL39L1

Target/Specificity

RPL39L (AAH12328, 1 a.a. ~ 51 a.a) full-length recombinant protein with GST tag. MW of the GST tag alone is 26 KDa.

Dilution

WB~~1:500~1000

Format

Clear, colorless solution in phosphate buffered saline, pH 7.2 .

Storage

Store at -20°C or lower. Aliquot to avoid repeated freezing and thawing.

Precautions

RPL39L Antibody (monoclonal) (M01) is for research use only and not for use in diagnostic or therapeutic procedures.

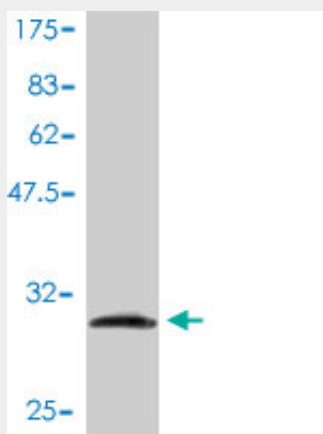
RPL39L Antibody (monoclonal) (M01) - Protocols

Provided below are standard protocols that you may find useful for product applications.

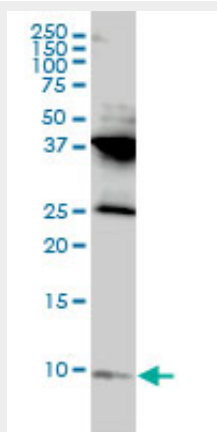
- [Western Blot](#)
- [Blocking Peptides](#)
- [Dot Blot](#)
- [Immunohistochemistry](#)

- [Immunofluorescence](#)
- [Immunoprecipitation](#)
- [Flow Cytometry](#)
- [Cell Culture](#)

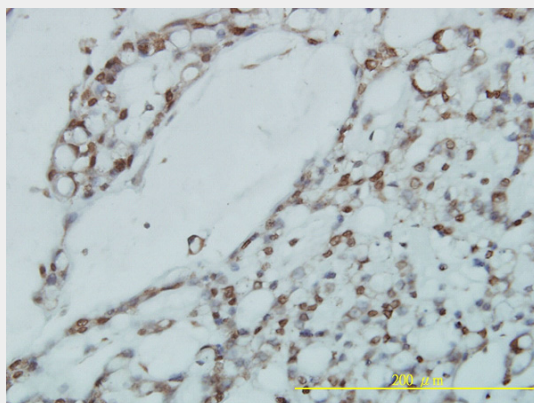
RPL39L Antibody (monoclonal) (M01) - Images



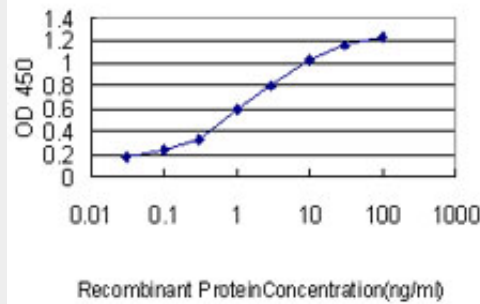
Antibody Reactive Against Recombinant Protein. Western Blot detection against Immunogen (31.35 kDa) .



RPL39L monoclonal antibody (M01), clone 4A8-1B6 Western Blot analysis of RPL39L expression in HL-60 (Cat # AT3708a)



Immunoperoxidase of monoclonal antibody to RPL39L on formalin-fixed paraffin-embedded human ovary, clear cell carcinoma tissue. [antibody concentration 1 ug/ml]



Detection limit for recombinant GST tagged RPL39L is approximately 0.1ng/ml as a capture antibody.

RPL39L Antibody (monoclonal) (M01) - Background

This gene encodes a protein sharing high sequence similarity with ribosomal protein L39. Although the name of this gene has been referred to as 'ribosomal protein L39' in the public databases, its official name is 'ribosomal protein L39-like'. It is not currently known whether the encoded protein is a functional ribosomal protein or whether it has evolved a function that is independent of the ribosome.

RPL39L Antibody (monoclonal) (M01) - References

The status, quality, and expansion of the NIH full-length cDNA project: the Mammalian Gene Collection (MGC). Gerhard DS, et al. Genome Res, 2004 Oct. PMID 15489334. Functional second genes generated by retrotransposition of the X-linked ribosomal protein genes. Uechi T, et al. Nucleic Acids Res, 2002 Dec 15. PMID 12490704. Generation and initial analysis of more than 15,000 full-length human and mouse cDNA sequences. Strausberg RL, et al. Proc Natl Acad Sci U S A, 2002 Dec 24. PMID 12477932. A human gene encoding a protein homologous to ribosomal protein L39 is normally expressed in the testis and derepressed in multiple cancer cells. Nadano D, et al. Biochim Biophys Acta, 2002 Sep 27. PMID 12359333.