

RPS17 Antibody (monoclonal) (M01)**Mouse monoclonal antibody raised against a partial recombinant RPS17.****Catalog # AT3712a****Specification**

RPS17 Antibody (monoclonal) (M01) - Product Information

Application	WB, IHC, E
Primary Accession	POCW22
Other Accession	NM_001021
Reactivity	Human, Mouse, Rat
Host	mouse
Clonality	Monoclonal
Isotype	IgG1 Kappa

RPS17 Antibody (monoclonal) (M01) - Additional Information**Other Names**

40S ribosomal protein S17-like, RPS17L

Target/Specificity

RPS17 (NP_001012, 36 a.a. ~ 135 a.a) partial recombinant protein with GST tag. MW of the GST tag alone is 26 KDa.

Dilution

WB~~1:500~1000

IHC~~1:100~500

E~~N/A

Format

Clear, colorless solution in phosphate buffered saline, pH 7.2 .

Storage

Store at -20°C or lower. Aliquot to avoid repeated freezing and thawing.

Precautions

RPS17 Antibody (monoclonal) (M01) is for research use only and not for use in diagnostic or therapeutic procedures.

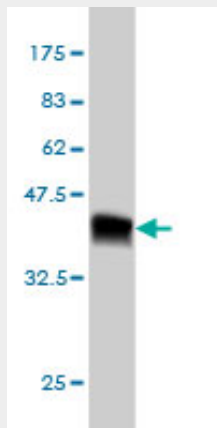
RPS17 Antibody (monoclonal) (M01) - Protocols

Provided below are standard protocols that you may find useful for product applications.

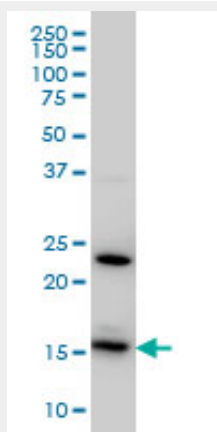
- [Western Blot](#)
- [Blocking Peptides](#)
- [Dot Blot](#)
- [Immunohistochemistry](#)
- [Immunofluorescence](#)
- [Immunoprecipitation](#)

- [Flow Cytometry](#)
- [Cell Culture](#)

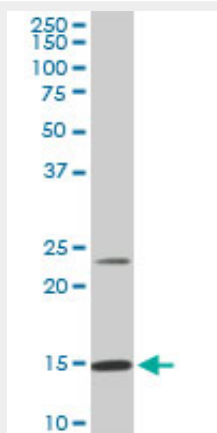
RPS17 Antibody (monoclonal) (M01) - Images



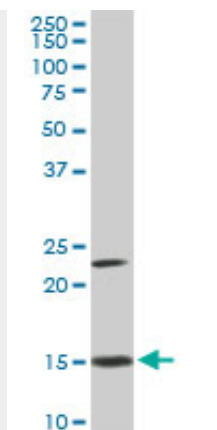
Antibody Reactive Against Recombinant Protein. Western Blot detection against Immunogen (36.74 kDa) .



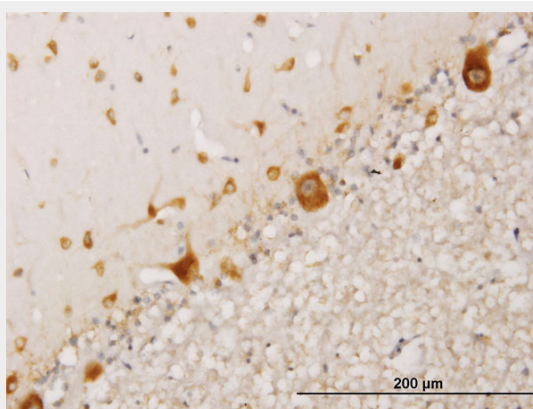
RPS17 monoclonal antibody (M01), clone 2C7 Western Blot analysis of RPS17 expression in HeLa (Cat # AT3712a)



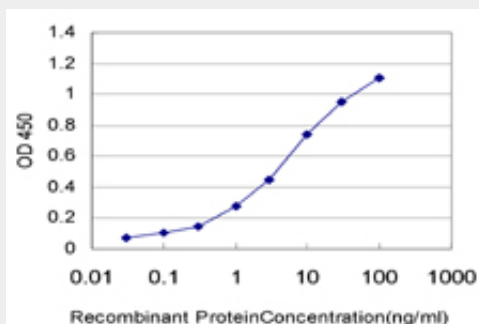
RPS17 monoclonal antibody (M01), clone 2C7. Western Blot analysis of RPS17 expression in PC-12 (Cat # AT3712a)



RPS17 monoclonal antibody (M01), clone 2C7. Western Blot analysis of RPS17 expression in NIH/3T3 (Cat # AT3712a)



Immunoperoxidase of monoclonal antibody to RPS17 on formalin-fixed paraffin-embedded human cerebellum. [antibody concentration 1.2 ug/ml]



Detection limit for recombinant GST tagged RPS17 is approximately 0.1 ng/ml as a capture antibody.

RPS17 Antibody (monoclonal) (M01) - Background

Ribosomes, the organelles that catalyze protein synthesis, consist of a small 40S subunit and a large 60S subunit. Together these subunits are composed of 4 RNA species and approximately 80 structurally distinct proteins. This gene encodes a ribosomal protein that is a component of the 40S subunit. The protein belongs to the S17E family of ribosomal proteins. It is located in the cytoplasm. As is typical for genes encoding ribosomal proteins, there are multiple processed pseudogenes of this gene dispersed through the genome.

RPS17 Antibody (monoclonal) (M01) - References

Mutations in the ribosomal protein genes in Japanese patients with Diamond-Blackfan anemia. Konno Y, et al. Haematologica, 2010 Aug. PMID 20378560. Ribosomal protein L5 and L11 mutations are associated with cleft palate and abnormal thumbs in Diamond-Blackfan anemia patients. Gazda HT, et al. Am J Hum Genet, 2008 Dec. PMID 19061985. The role of human ribosomal proteins in the maturation of rRNA and ribosome production. Robledo S, et al. RNA, 2008 Sep. PMID 18697920. RPS19 mutations in patients with Diamond-Blackfan anemia. Campagnoli MF, et al. Hum Mutat, 2008 Jul. PMID 18412286. Ribosomal protein S17 gene (RPS17) is mutated in Diamond-Blackfan anemia. Cmejla R, et al. Hum Mutat, 2007 Dec. PMID 17647292.