

**RPS2 Antibody (monoclonal) (M01)****Mouse monoclonal antibody raised against a partial recombinant RPS2.****Catalog # AT3714a****Specification**

---

**RPS2 Antibody (monoclonal) (M01) - Product Information**

Application	WB, IHC, IF, E
Primary Accession	<a href="#">P15880</a>
Other Accession	<a href="#">NM_002952</a>
Reactivity	Human
Host	mouse
Clonality	Monoclonal
Isotype	IgG2a Kappa
Calculated MW	31324

**RPS2 Antibody (monoclonal) (M01) - Additional Information****Gene ID** 6187**Other Names**

40S ribosomal protein S2, 40S ribosomal protein S4, Protein LLRep3, RPS2, RPS4

**Target/Specificity**

RPS2 (NP\_002943, 198 a.a. ~ 293 a.a) partial recombinant protein with GST tag. MW of the GST tag alone is 26 KDa.

**Dilution**

WB~~1:500~1000

IHC~~1:100~500

IF~~1:50~200

E~~N/A

**Format**

Clear, colorless solution in phosphate buffered saline, pH 7.2 .

**Storage**

Store at -20°C or lower. Aliquot to avoid repeated freezing and thawing.

**Precautions**

RPS2 Antibody (monoclonal) (M01) is for research use only and not for use in diagnostic or therapeutic procedures.

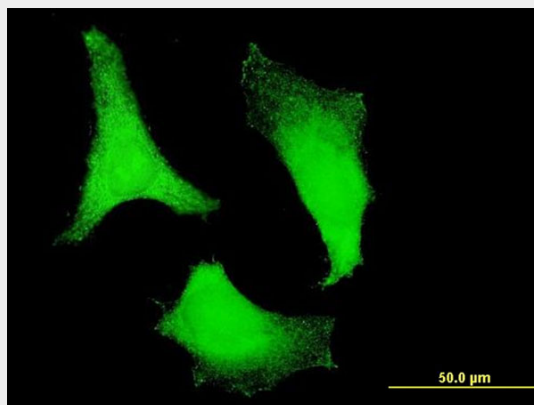
**RPS2 Antibody (monoclonal) (M01) - Protocols**

Provided below are standard protocols that you may find useful for product applications.

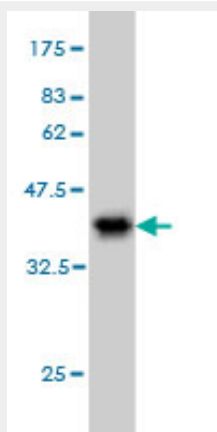
- [Western Blot](#)

- [Blocking Peptides](#)
- [Dot Blot](#)
- [Immunohistochemistry](#)
- [Immunofluorescence](#)
- [Immunoprecipitation](#)
- [Flow Cytometry](#)
- [Cell Culture](#)

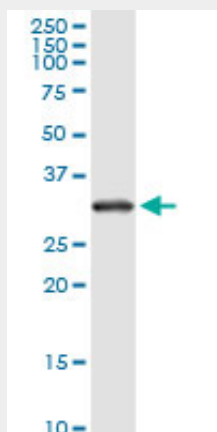
## RPS2 Antibody (monoclonal) (M01) - Images



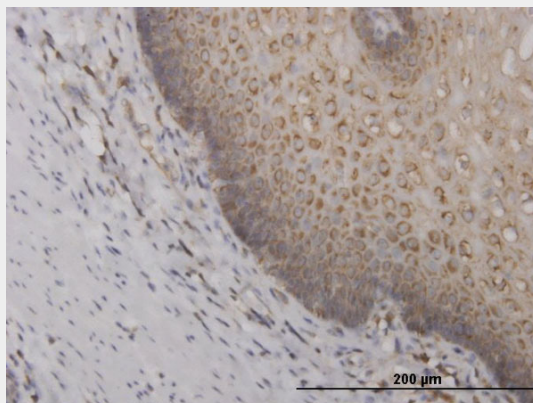
Immunofluorescence of monoclonal antibody to RPS2 on HeLa cell . [antibody concentration 10 ug/ml]



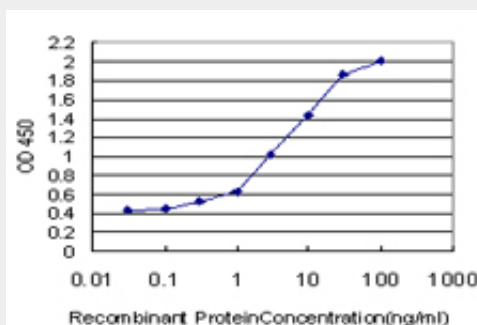
Antibody Reactive Against Recombinant Protein. Western Blot detection against Immunogen (36.3 KDa) .



RPS2 monoclonal antibody (M01), clone 3G6. Western Blot analysis of RPS2 expression in human liver.



Immunoperoxidase of monoclonal antibody to RPS2 on formalin-fixed paraffin-embedded human esophagus. [antibody concentration 1.2 ug/ml]



Detection limit for recombinant GST tagged RPS2 is approximately 0.03ng/ml as a capture antibody.

### RPS2 Antibody (monoclonal) (M01) - Background

Ribosomes, the organelles that catalyze protein synthesis, consist of a small 40S subunit and a large 60S subunit. Together these subunits are composed of 4 RNA species and approximately 80 structurally distinct proteins. This gene encodes a ribosomal protein that is a component of the 40S subunit. The protein belongs to the S5P family of ribosomal proteins. It is located in the cytoplasm. This gene shares sequence similarity with mouse LLRep3. It is co-transcribed with the small nucleolar RNA gene U64, which is located in its third intron. As is typical for genes encoding ribosomal proteins, there are multiple processed pseudogenes of this gene dispersed through the genome.

### RPS2 Antibody (monoclonal) (M01) - References

1. PRMT3 is essential for dendritic spine maturation in rat hippocampal neurons. Miyata S, Mori Y, Tohyama M. Brain Res. 2010 Sep 17;1352C:11-20. Epub 2010 Jul 18.