

S100A1 Antibody (monoclonal) (M01)**Mouse monoclonal antibody raised against a partial recombinant S100A1.****Catalog # AT3750a****Specification**

S100A1 Antibody (monoclonal) (M01) - Product Information

Application	WB, E
Primary Accession	P23297
Other Accession	NM_006271
Reactivity	Human
Host	mouse
Clonality	Monoclonal
Isotype	IgG1 kappa
Calculated MW	10546

S100A1 Antibody (monoclonal) (M01) - Additional Information**Gene ID** 6271**Other Names**

Protein S100-A1, S-100 protein alpha chain, S-100 protein subunit alpha, S100 calcium-binding protein A1, S100A1, S100A

Target/Specificity

S100A1 (NP_006262, 1 a.a. ~ 75 a.a) partial recombinant protein with GST tag. MW of the GST tag alone is 26 kDa.

Dilution

WB~~1:500~1000

E~~N/A

Format

Clear, colorless solution in phosphate buffered saline, pH 7.2 .

Storage

Store at -20°C or lower. Aliquot to avoid repeated freezing and thawing.

Precautions

S100A1 Antibody (monoclonal) (M01) is for research use only and not for use in diagnostic or therapeutic procedures.

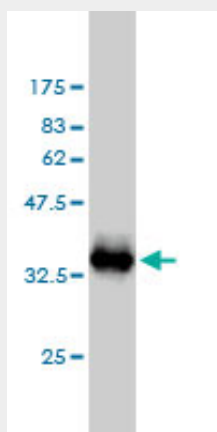
S100A1 Antibody (monoclonal) (M01) - Protocols

Provided below are standard protocols that you may find useful for product applications.

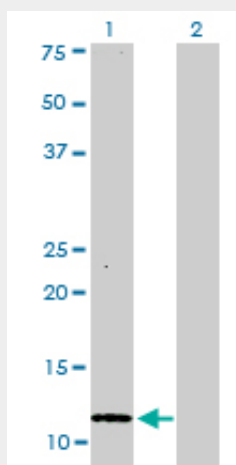
- [Western Blot](#)
- [Blocking Peptides](#)

- [Dot Blot](#)
- [Immunohistochemistry](#)
- [Immunofluorescence](#)
- [Immunoprecipitation](#)
- [Flow Cytometry](#)
- [Cell Culture](#)

S100A1 Antibody (monoclonal) (M01) - Images



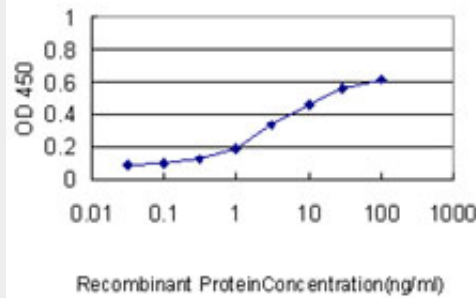
Antibody Reactive Against Recombinant Protein. Western Blot detection against Immunogen (33.99 kDa) .



Western Blot analysis of S100A1 expression in transfected 293T cell line by S100A1 monoclonal antibody (M01), clone 1D5.

Lane 1: S100A1 transfected lysate (10.5 kDa).

Lane 2: Non-transfected lysate.



Detection limit for recombinant GST tagged S100A1 is approximately 0.3ng/ml as a capture antibody.

S100A1 Antibody (monoclonal) (M01) - Background

The protein encoded by this gene is a member of the S100 family of proteins containing 2 EF-hand calcium-binding motifs. S100 proteins are localized in the cytoplasm and/or nucleus of a wide range of cells, and involved in the regulation of a number of cellular processes such as cell cycle progression and differentiation. S100 genes include at least 13 members which are located as a cluster on chromosome 1q21. This protein may function in stimulation of Ca^{2+} -induced Ca^{2+} release, inhibition of microtubule assembly, and inhibition of protein kinase C-mediated phosphorylation. Reduced expression of this protein has been implicated in cardiomyopathies.

S100A1 Antibody (monoclonal) (M01) - References

1. FISH Scoring on Paraffin Sections Versus Single-cell Suspension for Chromophobe Renal Carcinoma and Renal Oncocytoma. Brunelli M, Segala D, Delahunt B, Parolini C, Bersani S, Cheng L, Eble JN, Chilosi M, Gobbo S, Martignoni G. *Anticancer Res.* 2011 Oct;31(10):3137-42.