

## **S100A11 Antibody (monoclonal) (M01)**

Mouse monoclonal antibody raised against a full length recombinant S100A11.

Catalog # AT3752a

### **Specification**

---

#### **S100A11 Antibody (monoclonal) (M01) - Product Information**

Application	WB, IHC, IF, E
Primary Accession	<a href="#">P31949</a>
Other Accession	<a href="#">BC014354</a>
Reactivity	Human
Host	mouse
Clonality	Monoclonal
Isotype	IgG2a Kappa
Calculated MW	11740

#### **S100A11 Antibody (monoclonal) (M01) - Additional Information**

**Gene ID** 6282

##### **Other Names**

Protein S100-A11, Calgizzarin, Metastatic lymph node gene 70 protein, MLN 70, Protein S100-C, S100 calcium-binding protein A11, Protein S100-A11, N-terminally processed, S100A11, MLN70, S100C

##### **Target/Specificity**

S100A11 (AAH14354, 1 a.a. ~ 105 a.a) full-length recombinant protein with GST tag. MW of the GST tag alone is 26 KDa.

##### **Dilution**

WB~~1:500~1000

IHC~~1:100~500

IF~~1:50~200

E~~N/A

##### **Format**

Clear, colorless solution in phosphate buffered saline, pH 7.2 .

##### **Storage**

Store at -20°C or lower. Aliquot to avoid repeated freezing and thawing.

##### **Precautions**

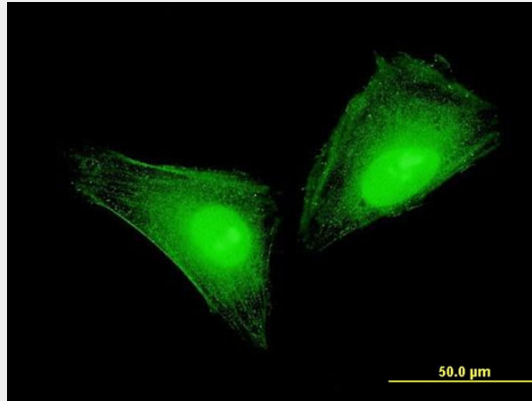
S100A11 Antibody (monoclonal) (M01) is for research use only and not for use in diagnostic or therapeutic procedures.

#### **S100A11 Antibody (monoclonal) (M01) - Protocols**

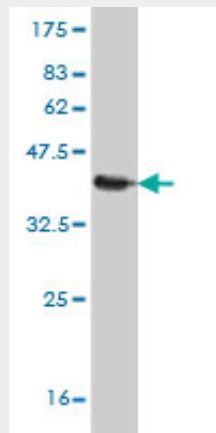
Provided below are standard protocols that you may find useful for product applications.

- [Western Blot](#)
- [Blocking Peptides](#)
- [Dot Blot](#)
- [Immunohistochemistry](#)
- [Immunofluorescence](#)
- [Immunoprecipitation](#)
- [Flow Cytometry](#)
- [Cell Culture](#)

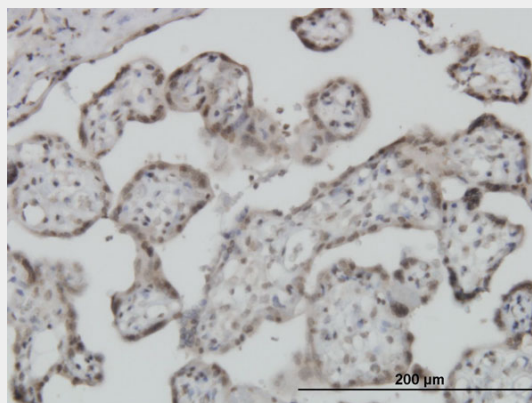
### S100A11 Antibody (monoclonal) (M01) - Images



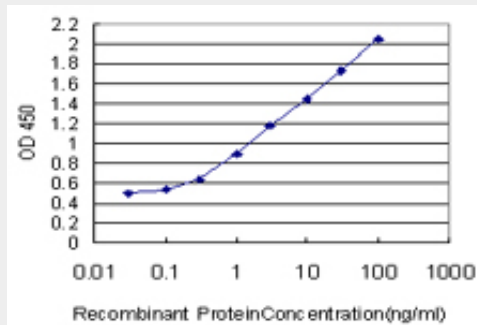
Immunofluorescence of monoclonal antibody to S100A11 on HeLa cell . [antibody concentration 10 ug/ml]



Antibody Reactive Against Recombinant Protein. Western Blot detection against Immunogen (37.29 KDa) .



Immunoperoxidase of monoclonal antibody to S100A11 on formalin-fixed paraffin-embedded human placenta. [antibody concentration 3 ug/ml]



Detection limit for recombinant GST tagged S100A11 is approximately 0.03ng/ml as a capture antibody.

### **S100A11 Antibody (monoclonal) (M01) - Background**

The protein encoded by this gene is a member of the S100 family of proteins containing 2 EF-hand calcium-binding motifs. S100 proteins are localized in the cytoplasm and/or nucleus of a wide range of cells, and involved in the regulation of a number of cellular processes such as cell cycle progression and differentiation. S100 genes include at least 13 members which are located as a cluster on chromosome 1q21. This protein may function in motility, invasion, and tubulin polymerization. Chromosomal rearrangements and altered expression of this gene have been implicated in tumor metastasis.

### **S100A11 Antibody (monoclonal) (M01) - References**

1.S100A expression in normal corneal-limbal epithelial cells and ocular surface squamous cell carcinoma tissue. Li J, Riau AK, Setiawan M, Mehta JS, Ti SE, Tong L, Tan DT, Beuerman RW. Mol Vis. 2011;17:2263-71. Epub 2011 Aug 20.

### **S100A11 Antibody (monoclonal) (M01) - Citations**

- [S100A11 is a potential prognostic marker for clear cell renal cell carcinoma.](#)