

S100A7 Antibody (monoclonal) (M03)

Mouse monoclonal antibody raised against a full length recombinant S100A7.

Catalog # AT3762a

Specification

S100A7 Antibody (monoclonal) (M03) - Product Information

Application	WB, IF, E
Primary Accession	P31151
Other Accession	BC034687.1
Reactivity	Human
Host	Mouse
Clonality	Monoclonal
Isotype	IgG2a Kappa
Calculated MW	11471

S100A7 Antibody (monoclonal) (M03) - Additional Information

Gene ID 6278

Other Names

Protein S100-A7, Psoriasin, S100 calcium-binding protein A7, S100A7, PSOR1, S100A7C

Target/Specificity

S100A7 (AAH34687.1, 1 a.a. ~ 101 a.a) full-length recombinant protein with GST tag. MW of the GST tag alone is 26 KDa.

Dilution

WB~~1:500~1000

IF~~1:50~200

E~~N/A

Format

Clear, colorless solution in phosphate buffered saline, pH 7.2 .

Storage

Store at -20°C or lower. Aliquot to avoid repeated freezing and thawing.

Precautions

S100A7 Antibody (monoclonal) (M03) is for research use only and not for use in diagnostic or therapeutic procedures.

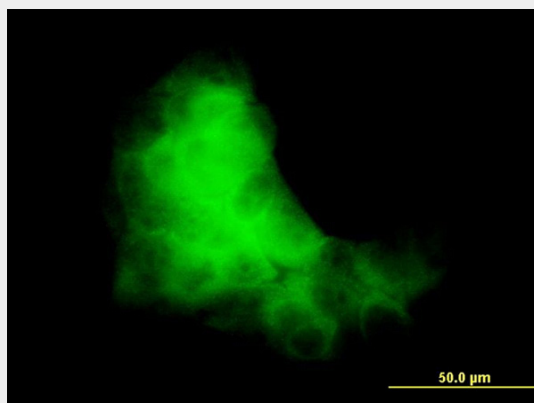
S100A7 Antibody (monoclonal) (M03) - Protocols

Provided below are standard protocols that you may find useful for product applications.

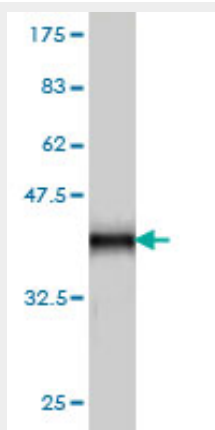
- [Western Blot](#)
- [Blocking Peptides](#)

- [Dot Blot](#)
- [Immunohistochemistry](#)
- [Immunofluorescence](#)
- [Immunoprecipitation](#)
- [Flow Cytometry](#)
- [Cell Culture](#)

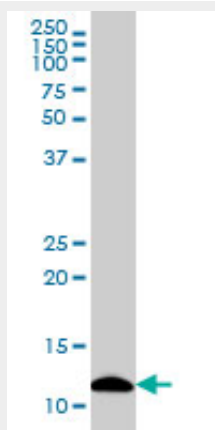
S100A7 Antibody (monoclonal) (M03) - Images



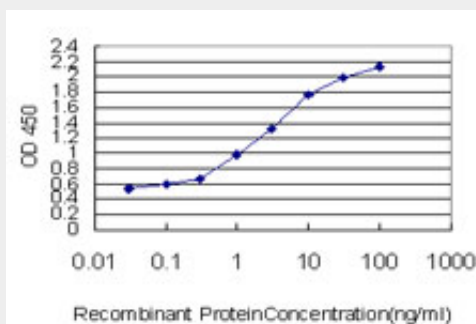
Immunofluorescence of monoclonal antibody to S100A7 on A-431 cell. [antibody concentration 10 ug/ml]



Antibody Reactive Against Recombinant Protein. Western Blot detection against Immunogen (36.85 KDa) .



S100A7 monoclonal antibody (M03), clone 1C1 Western Blot analysis of S100A7 expression in A-431 ((Cat # AT3762a)



Detection limit for recombinant GST tagged S100A7 is approximately 0.03ng/ml as a capture antibody.

S100A7 Antibody (monoclonal) (M03) - Background

The protein encoded by this gene is a member of the S100 family of proteins containing 2 EF-hand calcium-binding motifs. S100 proteins are localized in the cytoplasm and/or nucleus of a wide range of cells, and involved in the regulation of a number of cellular processes such as cell cycle progression and differentiation. S100 genes include at least 13 members which are located as a cluster on chromosome 1q21. This protein differs from the other S100 proteins of known structure in its lack of calcium binding ability in one EF-hand at the N-terminus. This protein is markedly over-expressed in the skin lesions of psoriatic patients, but is excluded as a candidate gene for familial psoriasis susceptibility. The exact function of this protein is not known.

S100A7 Antibody (monoclonal) (M03) - References

Evaluation of candidate stromal epithelial cross-talk genes identifies association between risk of serous ovarian cancer and TERT, a cancer susceptibility hot-spot. Johnatty SE, et al. PLoS Genet, 2010 Jul 8. PMID 20628624. Evidence for diminished levels of epithelial psoriasin and calprotectin in chronic rhinosinusitis. Tieu DD, et al. J Allergy Clin Immunol, 2010 Mar. PMID 20226301. S100A7 (psoriasin) is induced by the proinflammatory cytokines oncostatin-M and interleukin-6 in human breast cancer. West NR, et al. Oncogene, 2010 Apr 8. PMID 20101226. Structural and functional characterization of a triple mutant form of S100A7 defective for Jab1 binding. West NR, et al. Protein Sci, 2009 Dec. PMID 19844956. Identification and characterization of binding sites on S100A7, a participant in cancer and inflammation pathways. Le?n R, et al. Biochemistry, 2009 Nov 10. PMID 19810752.