

SAA1 Antibody (monoclonal) (M01)**Mouse monoclonal antibody raised against a full length recombinant SAA1.****Catalog # AT3765a****Specification**

SAA1 Antibody (monoclonal) (M01) - Product Information

Application	WB, IHC
Primary Accession	P0DJ18
Other Accession	BC007022
Reactivity	Human
Host	mouse
Clonality	Monoclonal
Isotype	IgG2b kappa
Calculated MW	13546

SAA1 Antibody (monoclonal) (M01) - Additional Information**Gene ID** 6288**Other Names**

Serum amyloid A-1 protein, SAA, Amyloid protein A, Amyloid fibril protein AA, Serum amyloid protein A(2-104), Serum amyloid protein A(3-104), Serum amyloid protein A(2-103), Serum amyloid protein A(2-102), Serum amyloid protein A(4-101), SAA1

Target/Specificity

SAA1 (AAH07022, 1 a.a. ~ 122 a.a) full-length recombinant protein with GST tag. MW of the GST tag alone is 26 KDa.

Dilution

WB~~1:500~1000

IHC~~1:100~500

Format

Clear, colorless solution in phosphate buffered saline, pH 7.2 .

Storage

Store at -20°C or lower. Aliquot to avoid repeated freezing and thawing.

Precautions

SAA1 Antibody (monoclonal) (M01) is for research use only and not for use in diagnostic or therapeutic procedures.

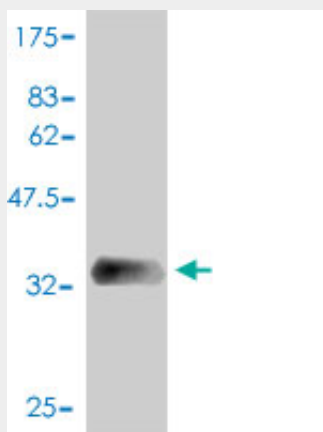
SAA1 Antibody (monoclonal) (M01) - Protocols

Provided below are standard protocols that you may find useful for product applications.

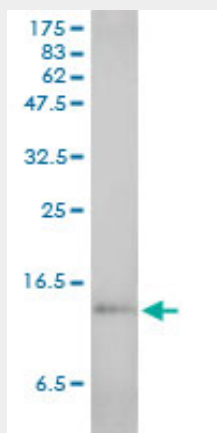
- [Western Blot](#)

- [Blocking Peptides](#)
- [Dot Blot](#)
- [Immunohistochemistry](#)
- [Immunofluorescence](#)
- [Immunoprecipitation](#)
- [Flow Cytometry](#)
- [Cell Culture](#)

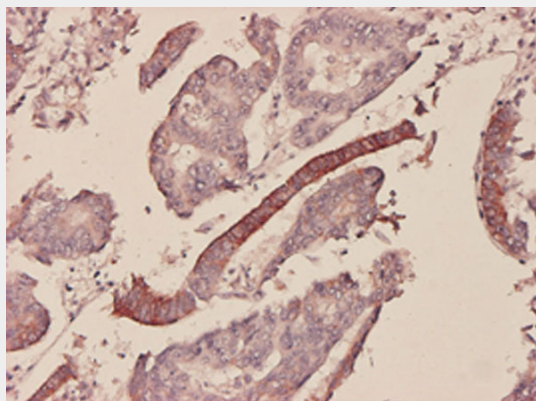
SAA1 Antibody (monoclonal) (M01) - Images



Antibody Reactive Against Recombinant Protein. Western Blot detection against Immunogen (39.16 KDa) .



SAA1 monoclonal antibody (M01), clone 3C11-2C1. Western Blot analysis of SAA1 expression in human spleen.



Immunoperoxidase of monoclonal antibody to SAA1 on formalin-fixed paraffin-embedded human colon adenocarcinoma tissue. [antibody concentration 1 ~ 10 ug/ml]

SAA1 Antibody (monoclonal) (M01) - Background

This gene encodes a member of the serum amyloid A family of apolipoproteins. The encoded protein is a major acute phase protein that is highly expressed in response to inflammation and tissue injury. This protein also plays an important role in HDL metabolism and cholesterol homeostasis. High levels of this protein are associated with chronic inflammatory diseases including atherosclerosis, rheumatoid arthritis, Alzheimer's disease and Crohn's disease. This protein may also be a potential biomarker for certain tumors. Alternate splicing results in multiple transcript variants that encode the same protein. A pseudogene of this gene is found on chromosome 11.

SAA1 Antibody (monoclonal) (M01) - References

[Distribution of genetic polymorphisms of serum amyloid protein A1 in healthy Chinese Han and Uighur populations in Xinjiang.] Xie X, et al. Zhonghua Yi Xue Yi Chuan Xue Za Zhi, 2010 Aug. PMID 20677144. Variation at the NFATC2 Locus Increases the Risk of Thiazolidinedione-Induced Edema in the Diabetes REduction Assessment with ramipril and rosiglitazone Medication (DREAM) Study. Bailey SD, et al. Diabetes Care, 2010 Jul 13. PMID 20628086. Serum amyloid A is elevated in the serum of lung cancer patients with poor prognosis. Cho WC, et al. Br J Cancer, 2010 Jun 8. PMID 20502455. Elevation of intact and proteolytic fragments of acute phase proteins constitutes the earliest systemic antiviral response in HIV-1 infection. Kramer HB, et al. PLoS Pathog, 2010 May 6. PMID 20463814. Acute serum amyloid A induces migration, angiogenesis, and inflammation in synovial cells in vitro and in a human rheumatoid arthritis/SCID mouse chimera model. Connolly M, et al. J Immunol, 2010 Jun 1. PMID 20435930.

SAA1 Antibody (monoclonal) (M01) - Citations

- [Association between physical activity and the expression of mediators of inflammation in normal breast tissue among premenopausal and postmenopausal women.](#)
- [Evaluation of Antioxidant Intakes in Relation to Inflammatory Markers Expression Within the Normal Breast Tissue of Breast Cancer Patients.](#)