

SAFB Antibody (monoclonal) (M04)**Mouse monoclonal antibody raised against a partial recombinant SAFB.****Catalog # AT3767a****Specification**

SAFB Antibody (monoclonal) (M04) - Product Information

Application	WB, IHC, IF, E
Primary Accession	Q15424
Other Accession	NM_002967
Reactivity	Human
Host	mouse
Clonality	Monoclonal
Isotype	IgG2b Kappa
Calculated MW	102642

SAFB Antibody (monoclonal) (M04) - Additional Information**Gene ID** 6294**Other Names**

Scaffold attachment factor B1, SAF-B, SAF-B1, HSP27 estrogen response element-TATA box-binding protein, HSP27 ERE-TATA-binding protein, SAFB, HAP, HET, SAFB1

Target/Specificity

SAFB (NP_002958, 111 a.a. ~ 200 a.a) partial recombinant protein with GST tag. MW of the GST tag alone is 26 KDa.

DilutionWB~~1:500~1000
IHC~~1:100~500
IF~~1:50~200
E~~N/A**Format**

Clear, colorless solution in phosphate buffered saline, pH 7.2 .

Storage

Store at -20°C or lower. Aliquot to avoid repeated freezing and thawing.

Precautions

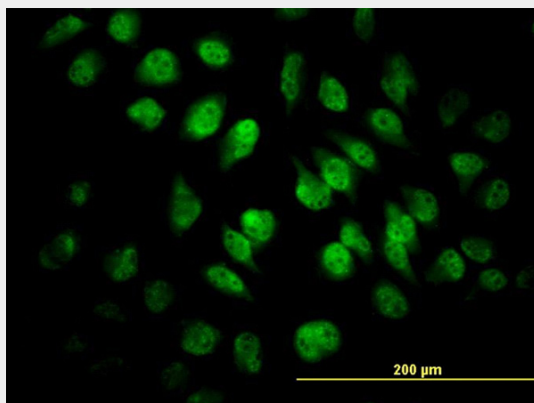
SAFB Antibody (monoclonal) (M04) is for research use only and not for use in diagnostic or therapeutic procedures.

SAFB Antibody (monoclonal) (M04) - Protocols

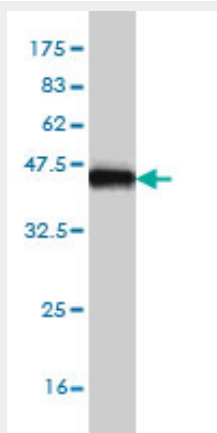
Provided below are standard protocols that you may find useful for product applications.

- [Western Blot](#)
- [Blocking Peptides](#)
- [Dot Blot](#)
- [Immunohistochemistry](#)
- [Immunofluorescence](#)
- [Immunoprecipitation](#)
- [Flow Cytometry](#)
- [Cell Culture](#)

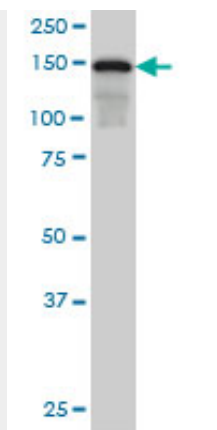
SAFB Antibody (monoclonal) (M04) - Images



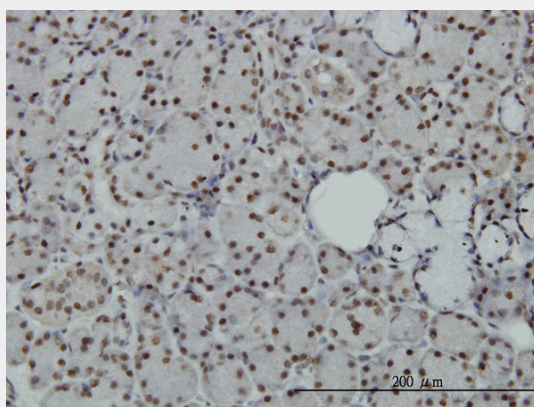
Immunofluorescence of monoclonal antibody to SAFB on HeLa cell. [antibody concentration 10 ug/ml]



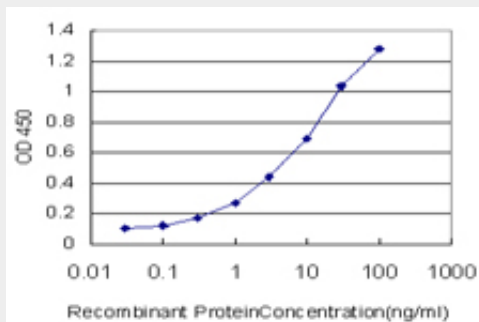
Antibody Reactive Against Recombinant Protein. Western Blot detection against Immunogen (35.64 KDa) .



SAFB monoclonal antibody (M04), clone 5A11 Western Blot analysis of SAFB expression in HeLa S3 NE (Cat # AT3767a)



Immunoperoxidase of monoclonal antibody to SAFB on formalin-fixed paraffin-embedded human salivary gland. [antibody concentration 3 ug/ml]



Detection limit for recombinant GST tagged SAFB is approximately 0.1ng/ml as a capture antibody.

SAFB Antibody (monoclonal) (M04) - Background

This gene encodes a DNA-binding protein that has high specificity for scaffold or matrix attachment region DNA elements (S/MAR DNA). This protein is thought to be involved in attaching the base of chromatin loops to the nuclear matrix but there is conflicting evidence as to whether this protein is a component of chromatin or a nuclear matrix protein. Scaffold attachment factors are a specific subset of nuclear matrix proteins (NMP) that specifically bind to S/MAR. This encoded protein is thought to serve as a molecular base to assemble a 'transcriptosome complex' in the vicinity of actively transcribed genes. It is involved in the regulation of the heat shock protein 27 transcription and also can act as an estrogen receptor corepressor. This gene is a candidate gene for breast tumorigenesis.

SAFB Antibody (monoclonal) (M04) - References

SAFB1 mediates repression of immune regulators and apoptotic genes in breast cancer cells. Hammerich-Hille S, et al. J Biol Chem, 2010 Feb 5. PMID 19901029. The enzymatic activity of SR protein kinases 1 and 1a is negatively affected by interaction with scaffold attachment factors B1 and 2. Tsianou D, et al. FEBS J, 2009 Sep. PMID 19674106. Defining the human deubiquitinating enzyme interaction landscape. Sowa ME, et al. Cell, 2009 Jul 23. PMID 19615732. Low SAFB levels are associated with worse outcome in breast cancer patients. Hammerich-Hille S, et al. Breast Cancer Res Treat, 2010 Jun. PMID 19137425. Estradiol and tamoxifen mediate rescue of the dominant-negative effects of estrogen response element-binding protein in vivo and in vitro. Chen H, et al. Endocrinology, 2009 May. PMID 19106221.