

SALF Antibody (monoclonal) (M01)**Mouse monoclonal antibody raised against a partial recombinant SALF.****Catalog # AT3768a****Specification**

SALF Antibody (monoclonal) (M01) - Product Information

Application	WB, E
Primary Accession	O9Y6Q2
Other Accession	NM_172311
Reactivity	Human
Host	mouse
Clonality	Monoclonal
Isotype	IgG2a Kappa
Calculated MW	83141

SALF Antibody (monoclonal) (M01) - Additional Information**Gene ID** 11037;286749**Other Names**

Stonin-1, Stoned B-like factor, STON1, SALF, SBLF, STN1

Target/Specificity

SALF (NP_758515, 141 a.a. ~ 249 a.a) partial recombinant protein with GST tag. MW of the GST tag alone is 26 KDa.

Dilution

WB~~1:500~1000

E~~N/A

Format

Clear, colorless solution in phosphate buffered saline, pH 7.2 .

Storage

Store at -20°C or lower. Aliquot to avoid repeated freezing and thawing.

Precautions

SALF Antibody (monoclonal) (M01) is for research use only and not for use in diagnostic or therapeutic procedures.

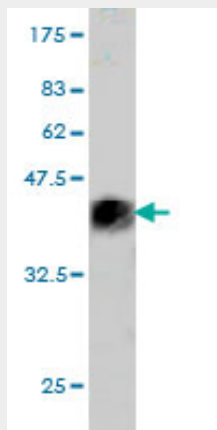
SALF Antibody (monoclonal) (M01) - Protocols

Provided below are standard protocols that you may find useful for product applications.

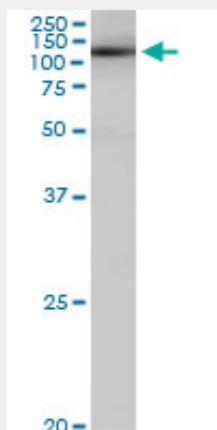
- [Western Blot](#)
- [Blocking Peptides](#)
- [Dot Blot](#)

- [Immunohistochemistry](#)
- [Immunofluorescence](#)
- [Immunoprecipitation](#)
- [Flow Cytometry](#)
- [Cell Culture](#)

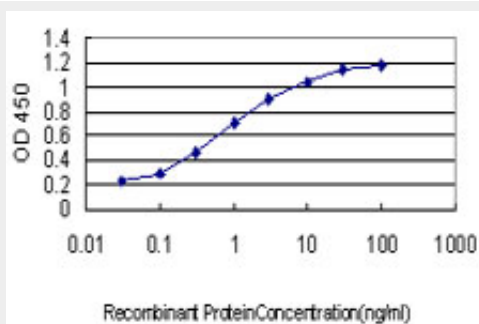
SALF Antibody (monoclonal) (M01) - Images



Antibody Reactive Against Recombinant Protein. Western Blot detection against Immunogen (37.73 kDa) .



SALF monoclonal antibody (M01), clone 5F12. Western Blot analysis of STON1-GTF2A1L expression in human pancreas.



Detection limit for recombinant GST tagged SALF is approximately 0.03ng/ml as a capture antibody.

SALF Antibody (monoclonal) (M01) - Background

The STON1-GTF2A1L mRNA is an infrequent but naturally occurring readthrough product of the neighboring STON1 and GTF2A1L genes. This rare transcript encodes a fusion protein composed of greater than 95% each of the individual elements, stonin 1 and general transcription factor IIA, 1-like. The significance of this readthrough mRNA and the function of its protein product have not yet been determined.

SALF Antibody (monoclonal) (M01) - References

Generation and initial analysis of more than 15,000 full-length human and mouse cDNA sequences. Strausberg RL, et al. Proc Natl Acad Sci U S A, 2002 Dec 24. PMID 12477932. Human stoned B interacts with AP-2 and synaptotagmin and facilitates clathrin-coated vesicle uncoating. Walther K, et al. EMBO Rep, 2001 Jul. PMID 11454741. Stonin 2: an adaptor-like protein that interacts with components of the endocytic machinery. Martina JA, et al. J Cell Biol, 2001 May 28. PMID 11381094. TFIIAalpha/beta-like factor is encoded by a germ cell-specific gene whose expression is up-regulated with other general transcription factors during spermatogenesis in the mouse. Han SY, et al. Biol Reprod, 2001 Feb. PMID 11159353. Identification of a general transcription factor TFIIAalpha/beta homolog selectively expressed in testis. Upadhyaya AB, et al. J Biol Chem, 1999 Jun 18. PMID 10364255.