

SC65 Antibody (monoclonal) (M01)**Mouse monoclonal antibody raised against a partial recombinant SC65.****Catalog # AT3776a****Specification**

SC65 Antibody (monoclonal) (M01) - Product Information

Application	WB
Primary Accession	Q92791
Other Accession	NM_006455
Reactivity	Human
Host	mouse
Clonality	Monoclonal
Isotype	IgG2a Kappa
Calculated MW	50381

SC65 Antibody (monoclonal) (M01) - Additional Information**Gene ID** 10609**Other Names**

Synaptonemal complex protein SC65, Leprecan-like protein 4, Nucleolar autoantigen No55, LEPREL4, NOL55, SC65

Target/Specificity

SC65 (NP_006446, 270 a.a. ~ 379 a.a) partial recombinant protein with GST tag. MW of the GST tag alone is 26 KDa.

Dilution

WB~~1:500~1000

Format

Clear, colorless solution in phosphate buffered saline, pH 7.2 .

Storage

Store at -20°C or lower. Aliquot to avoid repeated freezing and thawing.

Precautions

SC65 Antibody (monoclonal) (M01) is for research use only and not for use in diagnostic or therapeutic procedures.

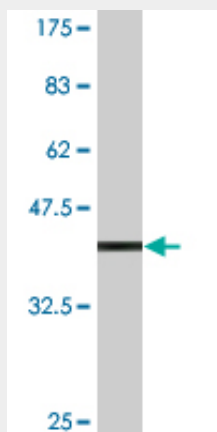
SC65 Antibody (monoclonal) (M01) - Protocols

Provided below are standard protocols that you may find useful for product applications.

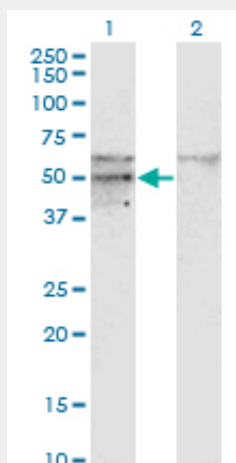
- [Western Blot](#)
- [Blocking Peptides](#)
- [Dot Blot](#)

- [Immunohistochemistry](#)
- [Immunofluorescence](#)
- [Immunoprecipitation](#)
- [Flow Cytometry](#)
- [Cell Culture](#)

SC65 Antibody (monoclonal) (M01) - Images



Antibody Reactive Against Recombinant Protein. Western Blot detection against Immunogen (37.84 kDa) .



Western Blot analysis of SC65 expression in transfected 293T cell line by SC65 monoclonal antibody (M01), clone 1E12.

Lane 1: SC65 transfected lysate (Predicted MW: 50.381 kDa).
Lane 2: Non-transfected lysate.

SC65 Antibody (monoclonal) (M01) - Background

This nucleolar protein was first characterized because it was an autoantigen in cases on interstitial cystitis. The protein, with a predicted molecular weight of 50 kDa, appears to be localized in the particulate compartment of the interphase nucleolus, with a distribution distinct from that of nucleolar protein B23. During mitosis it is associated with chromosomes.

SC65 Antibody (monoclonal) (M01) - References

Insulin-dependent interactions of proteins with GLUT4 revealed through stable isotope labeling by amino acids in cell culture (SILAC). Foster LJ, et al. J Proteome Res, 2006 Jan. PMID 16396496. The status, quality, and expansion of the NIH full-length cDNA project: the Mammalian Gene Collection (MGC). Gerhard DS, et al. Genome Res, 2004 Oct. PMID 15489334. Complete sequencing and characterization of 21,243 full-length human cDNAs. Ota T, et al. Nat Genet, 2004 Jan. PMID 14702039. Generation and initial analysis of more than 15,000 full-length human and mouse cDNA sequences. Strausberg RL, et al. Proc Natl Acad Sci U S A, 2002 Dec 24. PMID 12477932. Identification of nucleolar protein No55 as a tumour-associated autoantigen in patients with prostate cancer. Foss? A, et al. Br J Cancer, 2000 Sep. PMID 10952778.