

SCAMP3 Antibody (monoclonal) (M02)**Mouse monoclonal antibody raised against a partial recombinant SCAMP3.****Catalog # AT3777a****Specification**

SCAMP3 Antibody (monoclonal) (M02) - Product Information

Application	WB, E
Primary Accession	O14828
Other Accession	NM_005698
Reactivity	Human
Host	Mouse
Clonality	Monoclonal
Isotype	IgG1 Lambda
Calculated MW	38287

SCAMP3 Antibody (monoclonal) (M02) - Additional Information**Gene ID** 10067**Other Names**

Secretory carrier-associated membrane protein 3, Secretory carrier membrane protein 3, SCAMP3, C1orf3, PROPIN1

Target/Specificity

SCAMP3 (NP_005689, 70 a.a. ~ 169 a.a) partial recombinant protein with GST tag. MW of the GST tag alone is 26 KDa.

Dilution

WB~~1:500~1000

E~~N/A

Format

Clear, colorless solution in phosphate buffered saline, pH 7.2 .

Storage

Store at -20°C or lower. Aliquot to avoid repeated freezing and thawing.

Precautions

SCAMP3 Antibody (monoclonal) (M02) is for research use only and not for use in diagnostic or therapeutic procedures.

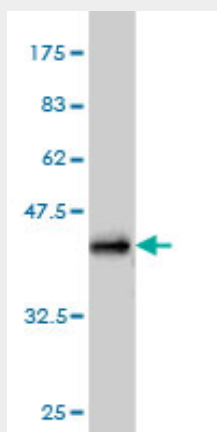
SCAMP3 Antibody (monoclonal) (M02) - Protocols

Provided below are standard protocols that you may find useful for product applications.

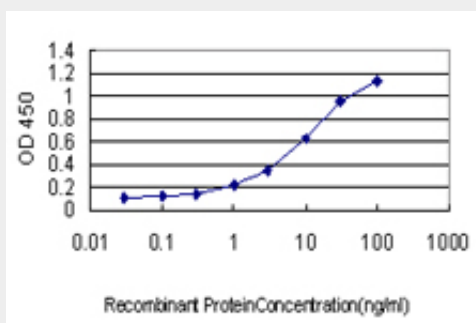
- [Western Blot](#)
- [Blocking Peptides](#)

- [Dot Blot](#)
- [Immunohistochemistry](#)
- [Immunofluorescence](#)
- [Immunoprecipitation](#)
- [Flow Cytometry](#)
- [Cell Culture](#)

SCAMP3 Antibody (monoclonal) (M02) - Images



Antibody Reactive Against Recombinant Protein. Western Blot detection against Immunogen (36.74 kDa) .



Detection limit for recombinant GST tagged SCAMP3 is approximately 0.3 ng/ml as a capture antibody.

SCAMP3 Antibody (monoclonal) (M02) - Background

This gene product belongs to the SCAMP family of proteins which are secretory carrier membrane proteins. They function as carriers to the cell surface in post-golgi recycling pathways. Different family members are highly related products of distinct genes, and are usually expressed together. These findings suggest that the SCAMPs may function at the same site during vesicular transport rather than in separate pathways. Two transcript variants encoding different isoforms have been found for this gene.

SCAMP3 Antibody (monoclonal) (M02) - References

SCAMP3 is a component of the Salmonella-induced tubular network and reveals an interaction between bacterial effectors and post-Golgi trafficking. Mota LJ, et al. Cell Microbiol, 2009 Aug. PMID 19438519. SCAMP3 negatively regulates epidermal growth factor receptor degradation and promotes receptor recycling. Aoh QL, et al. Mol Biol Cell, 2009 Mar. PMID 19158374. Global, in vivo, and site-specific phosphorylation dynamics in signaling networks. Olsen JV, et al. Cell, 2006 Nov 3. PMID 17081983. Immunoaffinity profiling of tyrosine phosphorylation in cancer cells. Rush J, et al.

Nat Biotechnol, 2005 Jan. PMID 15592455. The status, quality, and expansion of the NIH full-length cDNA project: the Mammalian Gene Collection (MGC). Gerhard DS, et al. Genome Res, 2004 Oct. PMID 15489334.