

**SCGB1A1 Antibody (monoclonal) (M11)****Mouse monoclonal antibody raised against a full-length recombinant SCGB1A1.****Catalog # AT3786a****Specification**

---

**SCGB1A1 Antibody (monoclonal) (M11) - Product Information**

Application	WB, E
Primary Accession	<a href="#">P11684</a>
Other Accession	<a href="#">BC004481</a>
Reactivity	Human
Host	mouse
Clonality	Monoclonal
Isotype	IgG2a Kappa
Calculated MW	9994

**SCGB1A1 Antibody (monoclonal) (M11) - Additional Information****Gene ID** 7356**Other Names**

Uteroglobin, Clara cell phospholipid-binding protein, CCPBP, Clara cells 10 kDa secretory protein, CC10, Secretoglobin family 1A member 1, Urinary protein 1, UP-1, UP1, Urine protein 1, SCGB1A1, CC10, CCSP, UGB

**Target/Specificity**

SCGB1A1 (AAH04481, 22 a.a. ~ 91 a.a) full-length recombinant protein with GST tag. MW of the GST tag alone is 26 KDa.

**Dilution**

WB~~1:500~1000

E~~N/A

**Format**

Clear, colorless solution in phosphate buffered saline, pH 7.2 .

**Storage**

Store at -20°C or lower. Aliquot to avoid repeated freezing and thawing.

**Precautions**

SCGB1A1 Antibody (monoclonal) (M11) is for research use only and not for use in diagnostic or therapeutic procedures.

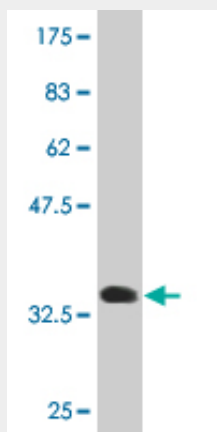
**SCGB1A1 Antibody (monoclonal) (M11) - Protocols**

Provided below are standard protocols that you may find useful for product applications.

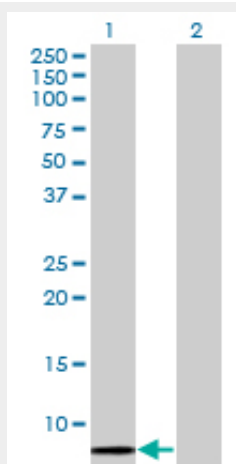
- [Western Blot](#)

- [Blocking Peptides](#)
- [Dot Blot](#)
- [Immunohistochemistry](#)
- [Immunofluorescence](#)
- [Immunoprecipitation](#)
- [Flow Cytometry](#)
- [Cell Culture](#)

### SCGB1A1 Antibody (monoclonal) (M11) - Images



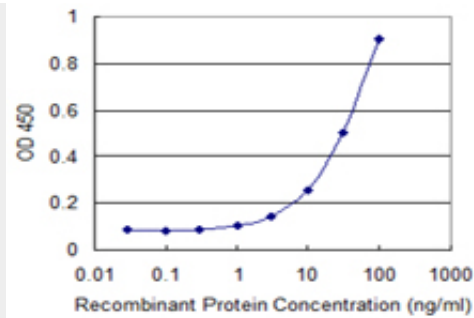
Antibody Reactive Against Recombinant Protein. Western Blot detection against Immunogen (33.44 KDa) .



Western Blot analysis of SCGB1A1 expression in transfected 293T cell line by SCGB1A1 monoclonal antibody (M11), clone 1F7.

Lane 1: SCGB1A1 transfected lysate(10 KDa).

Lane 2: Non-transfected lysate.



Detection limit for recombinant GST tagged SCGB1A1 is 1 ng/ml as a capture antibody.

### **SCGB1A1 Antibody (monoclonal) (M11) - Background**

This gene encodes a member of the secretoglobin family of small secreted proteins. The encoded protein has been implicated in numerous functions including anti-inflammation, inhibition of phospholipase A2 and the sequestering of hydrophobic ligands. Defects in this gene are associated with a susceptibility to asthma.

### **SCGB1A1 Antibody (monoclonal) (M11) - References**

Association of STR polymorphisms in CMA1 and IL-4 with asthma and atopy: The SAPALDIA Cohort. Hersberger M, et al. Hum Immunol, 2010 Aug 22. PMID 20736038. Clara cell secretory protein and surfactant protein-D do not predict bronchiolitis obliterans syndrome after lung transplantation. Paantjens AW, et al. Transplantation, 2010 Aug 15. PMID 20683434. An approach based on a genome-wide association study reveals candidate loci for narcolepsy. Shimada M, et al. Hum Genet, 2010 Oct. PMID 20677014. Single nucleotide polymorphisms in inflammation-related genes are associated with venous thromboembolism. Beckers MM, et al. Eur J Intern Med, 2010 Aug. PMID 20603037. Independent predictive roles of eotaxin Ala23Thr, paraoxonase 2 Ser311Cys and beta-adrenergic receptor Trp64Arg polymorphisms on cardiac disease in Type 2 Diabetes--an 8-year prospective cohort analysis of 1297 patients. Wang Y, et al. Diabet Med, 2010 Apr. PMID 20536507.