

**SCN3A Antibody (monoclonal) (M01)****Mouse monoclonal antibody raised against a partial recombinant SCN3A.****Catalog # AT3793a****Specification**

---

**SCN3A Antibody (monoclonal) (M01) - Product Information**

Application	WB, E
Primary Accession	<a href="#">O9NY46</a>
Other Accession	<a href="#">NM_006922</a>
Reactivity	Human
Host	mouse
Clonality	Monoclonal
Isotype	IgG2b Kappa
Calculated MW	226294

**SCN3A Antibody (monoclonal) (M01) - Additional Information****Gene ID** 6328**Other Names**

Sodium channel protein type 3 subunit alpha, Sodium channel protein brain III subunit alpha, Sodium channel protein type III subunit alpha, Voltage-gated sodium channel subtype III, Voltage-gated sodium channel subunit alpha Nav13, SCN3A, KIAA1356, NAC3

**Target/Specificity**

SCN3A (NP\_008853, 1861 a.a. ~ 1960 a.a) partial recombinant protein with GST tag. MW of the GST tag alone is 26 KDa.

**Dilution**

WB~~1:500~1000

**Format**

Clear, colorless solution in phosphate buffered saline, pH 7.2 .

**Storage**

Store at -20°C or lower. Aliquot to avoid repeated freezing and thawing.

**Precautions**

SCN3A Antibody (monoclonal) (M01) is for research use only and not for use in diagnostic or therapeutic procedures.

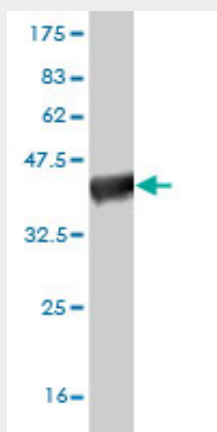
**SCN3A Antibody (monoclonal) (M01) - Protocols**

Provided below are standard protocols that you may find useful for product applications.

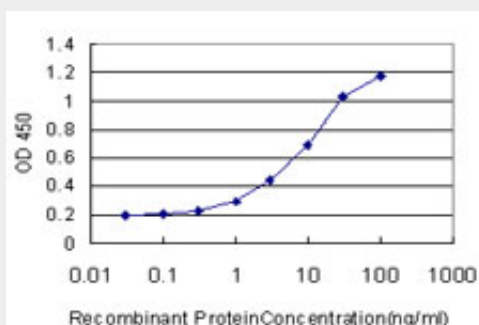
- [Western Blot](#)
- [Blocking Peptides](#)

- [Dot Blot](#)
- [Immunohistochemistry](#)
- [Immunofluorescence](#)
- [Immunoprecipitation](#)
- [Flow Cytometry](#)
- [Cell Culture](#)

### SCN3A Antibody (monoclonal) (M01) - Images



Antibody Reactive Against Recombinant Protein. Western Blot detection against Immunogen (36.74 kDa) .



Detection limit for recombinant GST tagged SCN3A is approximately 0.3ng/ml as a capture antibody.

### SCN3A Antibody (monoclonal) (M01) - Background

Voltage-gated sodium channels are transmembrane glycoprotein complexes composed of a large alpha subunit with 24 transmembrane domains and one or more regulatory beta subunits. They are responsible for the generation and propagation of action potentials in neurons and muscle. This gene encodes one member of the sodium channel alpha subunit gene family, and is found in a cluster of five alpha subunit genes on chromosome 2. Multiple transcript variants encoding different isoforms have been found for this gene.

### SCN3A Antibody (monoclonal) (M01) - References

Personalized smoking cessation: interactions between nicotine dose, dependence and quit-success genotype score. Rose JE, et al. Mol Med, 2010 Jul-Aug. PMID 20379614. Abnormal expression of voltage-gated sodium channels Nav1.7, Nav1.3 and Nav1.8 in trigeminal neuralgia. Siqueira SR, et al. Neuroscience, 2009 Dec 1. PMID 19699781. Multidrug resistance in epilepsy and polymorphisms in the voltage-gated sodium channel genes SCN1A, SCN2A, and SCN3A: correlation among phenotype, genotype, and mRNA expression. Kwan P, et al. Pharmacogenet Genomics, 2008 Nov.

PMID 18784617.Characterization of 5' untranslated regions of the voltage-gated sodium channels SCN1A, SCN2A, and SCN3A and identification of cis-conserved noncoding sequences. Martin MS, et al. Genomics, 2007 Aug. PMID 17544618.International Union of Pharmacology. XLVII. Nomenclature and structure-function relationships of voltage-gated sodium channels. Catterall WA, et al. Pharmacol Rev, 2005 Dec. PMID 16382098.