

**SDHC Antibody (monoclonal) (M01)****Mouse monoclonal antibody raised against a full length recombinant SDHC.****Catalog # AT3802a****Specification**

---

**SDHC Antibody (monoclonal) (M01) - Product Information**

Application	WB, IHC
Primary Accession	<a href="#">Q99643</a>
Other Accession	<a href="#">BC033626</a>
Reactivity	Human
Host	Mouse
Clonality	Monoclonal
Isotype	IgG2a Kappa
Calculated MW	18610

**SDHC Antibody (monoclonal) (M01) - Additional Information****Gene ID** 6391**Other Names**

Succinate dehydrogenase cytochrome b560 subunit, mitochondrial, Integral membrane protein CII-3, QPs-1, QPs1, Succinate dehydrogenase complex subunit C, Succinate-ubiquinone oxidoreductase cytochrome B large subunit, CYBL, SDHC, CYB560, SDH3

**Target/Specificity**

SDHC (AAH33626, 1 a.a. ~ 169 a.a) full-length recombinant protein with GST tag. MW of the GST tag alone is 26 KDa.

**Dilution**

WB~~1:500~1000

IHC~~1:100~500

**Format**

Clear, colorless solution in phosphate buffered saline, pH 7.2 .

**Storage**

Store at -20°C or lower. Aliquot to avoid repeated freezing and thawing.

**Precautions**

SDHC Antibody (monoclonal) (M01) is for research use only and not for use in diagnostic or therapeutic procedures.

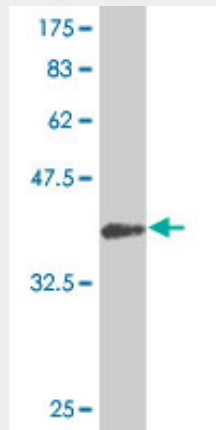
**SDHC Antibody (monoclonal) (M01) - Protocols**

Provided below are standard protocols that you may find useful for product applications.

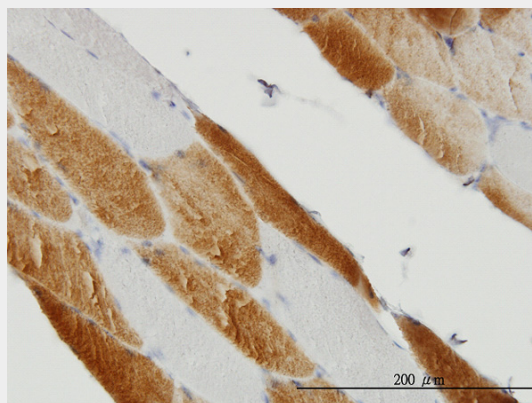
- [Western Blot](#)

- [Blocking Peptides](#)
- [Dot Blot](#)
- [Immunohistochemistry](#)
- [Immunofluorescence](#)
- [Immunoprecipitation](#)
- [Flow Cytometry](#)
- [Cell Culture](#)

#### **SDHC Antibody (monoclonal) (M01) - Images**



Antibody Reactive Against Recombinant Protein. Western Blot detection against Immunogen (44.33 KDa) .



Immunoperoxidase of monoclonal antibody to SDHC on formalin-fixed paraffin-embedded human skeletal muscle. [antibody concentration 3 ug/ml]

#### **SDHC Antibody (monoclonal) (M01) - Background**

This gene encodes one of four nuclear-encoded subunits that comprise succinate dehydrogenase, also known as mitochondrial complex II, a key enzyme complex of the tricarboxylic acid cycle and aerobic respiratory chains of mitochondria. The encoded protein is one of two integral membrane proteins that anchor other subunits of the complex, which form the catalytic core, to the inner mitochondrial membrane. Several related pseudogenes are located in different genomic regions. Mutations in this gene have been associated with paragangliomas. Alternatively spliced transcript variants encoding different isoforms have been described.

#### **SDHC Antibody (monoclonal) (M01) - References**

Immunohistochemistry for SDHB triages genetic testing of SDHB, SDHC, and SDHD in

paraganglioma-pheochromocytoma syndromes. Gill AJ, et al. Hum Pathol, 2010 Jun. PMID 20236688. Relevance of germline mutation screening in both familial and sporadic head and neck paraganglioma for early diagnosis and clinical management. Hermsen MA, et al. Cell Oncol, 2010 Jan 1. PMID 20208144. Development and validation of a comprehensive mutation and deletion detection assay for SDHB, SDHC, and SDHD. Milosevic D, et al. Clin Biochem, 2010 May. PMID 20153743. Isocitrate dehydrogenase mutations are rare in pheochromocytomas and paragangliomas. Gaal J, et al. J Clin Endocrinol Metab, 2010 Mar. PMID 19915015. A role for succinate dehydrogenase genes in low chemoresponsiveness to hypoxia? Richalet JP, et al. Clin Auton Res, 2009 Dec. PMID 19768395.