

**SDHC Antibody (monoclonal) (M02)****Mouse monoclonal antibody raised against a full length recombinant SDHC.****Catalog # AT3803a****Specification**

---

**SDHC Antibody (monoclonal) (M02) - Product Information**

Application	WB
Primary Accession	<a href="#">Q99643</a>
Other Accession	<a href="#">BC033626</a>
Reactivity	Human
Host	mouse
Clonality	Monoclonal
Isotype	IgG2a Kappa
Calculated MW	18610

**SDHC Antibody (monoclonal) (M02) - Additional Information****Gene ID** 6391**Other Names**

Succinate dehydrogenase cytochrome b560 subunit, mitochondrial, Integral membrane protein CII-3, QPs-1, QPs1, Succinate dehydrogenase complex subunit C, Succinate-ubiquinone oxidoreductase cytochrome B large subunit, CYBL, SDHC, CYB560, SDH3

**Target/Specificity**

SDHC (AAH33626, 1 a.a. ~ 169 a.a) full-length recombinant protein with GST tag. MW of the GST tag alone is 26 KDa.

**Dilution**

WB~~1:500~1000

**Format**

Clear, colorless solution in phosphate buffered saline, pH 7.2 .

**Storage**

Store at -20°C or lower. Aliquot to avoid repeated freezing and thawing.

**Precautions**

SDHC Antibody (monoclonal) (M02) is for research use only and not for use in diagnostic or therapeutic procedures.

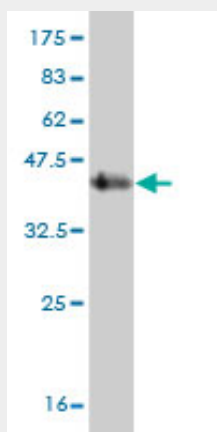
**SDHC Antibody (monoclonal) (M02) - Protocols**

Provided below are standard protocols that you may find useful for product applications.

- [Western Blot](#)
- [Blocking Peptides](#)

- [Dot Blot](#)
- [Immunohistochemistry](#)
- [Immunofluorescence](#)
- [Immunoprecipitation](#)
- [Flow Cytometry](#)
- [Cell Culture](#)

#### **SDHC Antibody (monoclonal) (M02) - Images**



Antibody Reactive Against Recombinant Protein. Western Blot detection against Immunogen (44.33 kDa) .

#### **SDHC Antibody (monoclonal) (M02) - Background**

This gene encodes one of four nuclear-encoded subunits that comprise succinate dehydrogenase, also known as mitochondrial complex II, a key enzyme complex of the tricarboxylic acid cycle and aerobic respiratory chains of mitochondria. The encoded protein is one of two integral membrane proteins that anchor other subunits of the complex, which form the catalytic core, to the inner mitochondrial membrane. Several related pseudogenes are located in different genomic regions. Mutations in this gene have been associated with paragangliomas. Alternatively spliced transcript variants encoding different isoforms have been described.

#### **SDHC Antibody (monoclonal) (M02) - References**

1. Specific disintegration of complex II succinate:ubiquinone oxidoreductase links pH changes to oxidative stress for apoptosis induction. Lemarie A, Huc L, Pazarentzos E, Mahul-Mellier AL, Grimm S. Cell Death Differ. 2010 Aug 13. [Epub ahead of print]
2. Mutations in the heme b-binding residue of SDHC inhibit assembly of respiratory chain complex II in mammalian cells. Lemarie A, Grimm S. Mitochondrion. 2009 Jul;9(4):254-60. Epub 2009 Mar 28.