

**SEPX1 Antibody (monoclonal) (M02)****Mouse monoclonal antibody raised against a partial recombinant SEPX1.****Catalog # AT3815a****Specification**

---

**SEPX1 Antibody (monoclonal) (M02) - Product Information**

Application	WB, IHC, E
Primary Accession	<a href="#">O9NZV6</a>
Other Accession	<a href="#">NM_016332</a>
Reactivity	Human
Host	mouse
Clonality	Monoclonal
Isotype	IgG1 Kappa
Calculated MW	12760

**SEPX1 Antibody (monoclonal) (M02) - Additional Information****Gene ID** 51734**Other Names**

Methionine-R-sulfoxide reductase B1, MsrB1, 184-, Selenoprotein X, SelX, MSRB1, SEPX1

**Target/Specificity**

SEPX1 (NP\_057416, 1 a.a. ~ 84 a.a) partial recombinant protein with GST tag. MW of the GST tag alone is 26 KDa.

**Dilution**

WB~~1:500~1000

**Format**

Clear, colorless solution in phosphate buffered saline, pH 7.2 .

**Storage**

Store at -20°C or lower. Aliquot to avoid repeated freezing and thawing.

**Precautions**

SEPX1 Antibody (monoclonal) (M02) is for research use only and not for use in diagnostic or therapeutic procedures.

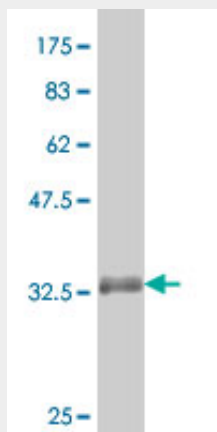
**SEPX1 Antibody (monoclonal) (M02) - Protocols**

Provided below are standard protocols that you may find useful for product applications.

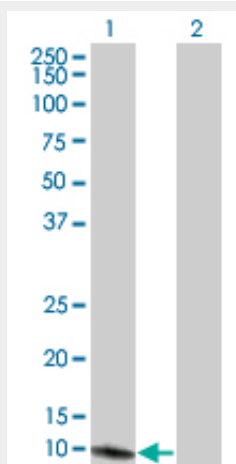
- [Western Blot](#)
- [Blocking Peptides](#)
- [Dot Blot](#)
- [Immunohistochemistry](#)

- [Immunofluorescence](#)
- [Immunoprecipitation](#)
- [Flow Cytometry](#)
- [Cell Culture](#)

### SEPX1 Antibody (monoclonal) (M02) - Images

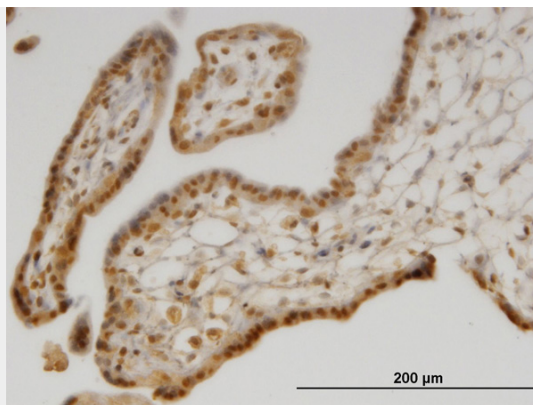


Antibody Reactive Against Recombinant Protein. Western Blot detection against Immunogen (34.98 kDa) .

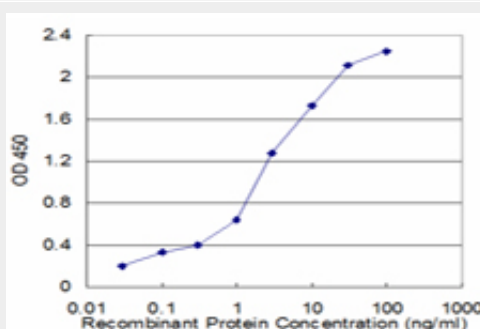


Western Blot analysis of SEPX1 expression in transfected 293T cell line by SEPX1 monoclonal antibody (M02), clone 8B2.

Lane 1: SEPX1 transfected lysate (12.713 kDa).  
Lane 2: Non-transfected lysate.



Immunoperoxidase of monoclonal antibody to SEPX1 on formalin-fixed paraffin-embedded human placenta. [antibody concentration 1.5 ug/ml]



Detection limit for recombinant GST tagged SEPX1 is approximately 0.1ng/ml as a capture antibody.

### SEPX1 Antibody (monoclonal) (M02) - Background

This gene encodes a selenoprotein, which contains a selenocysteine (Sec) residue at its active site. The selenocysteine is encoded by the UGA codon that normally signals translation termination. The 3' UTR of selenoprotein genes have a common stem-loop structure, the sec insertion sequence (SECIS), that is necessary for the recognition of UGA as a Sec codon rather than as a stop signal. This protein belongs to the methionine sulfoxide reductase B (MsrB) family, and it is expressed in a variety of adult and fetal tissues.

### SEPX1 Antibody (monoclonal) (M02) - References

Up-regulation of ADM and SEPX1 in the lymphoblastoid cells of patients in monozygotic twins discordant for schizophrenia. Kakiuchi C, et al. Am J Med Genet B Neuropsychiatr Genet, 2008 Jul 5. PMID 18081029. Neutrophil granulocytes uniquely express, among human blood cells, high levels of Methionine-sulfoxide-reductase enzymes. Achilli C, et al. J Leukoc Biol, 2008 Jan. PMID 17938273. The status, quality, and expansion of the NIH full-length cDNA project: the Mammalian Gene Collection (MGC). Gerhard DS, et al. Genome Res, 2004 Oct. PMID 15489334. Methionine sulfoxide reduction in mammals: characterization of methionine-R-sulfoxide reductases. Kim HY, et al. Mol Biol Cell, 2004 Mar. PMID 14699060. Generation and initial analysis of more than 15,000 full-length human and mouse cDNA sequences. Strausberg RL, et al. Proc Natl Acad Sci U S A, 2002 Dec 24. PMID 12477932.