

SERPINA10 Antibody (monoclonal) (M02)

Mouse monoclonal antibody raised against a full length recombinant SERPINA10.

Catalog # AT3816a

Specification

SERPINA10 Antibody (monoclonal) (M02) - Product Information

Application	WB, IP, E
Primary Accession	Q9UK55
Other Accession	BC022261
Reactivity	Human
Host	mouse
Clonality	Monoclonal
Isotype	IgG2a Kappa
Calculated MW	50707

SERPINA10 Antibody (monoclonal) (M02) - Additional Information

Gene ID 51156

Other Names

Protein Z-dependent protease inhibitor, PZ-dependent protease inhibitor, PZI, Serpin A10, SERPINA10, ZPI

Target/Specificity

SERPINA10 (AAH22261, 22 a.a. ~ 444 a.a) full-length recombinant protein with GST tag. MW of the GST tag alone is 26 KDa.

Dilution

WB~~1:500~1000

IP~~N/A

E~~N/A

Format

Clear, colorless solution in phosphate buffered saline, pH 7.2 .

Storage

Store at -20°C or lower. Aliquot to avoid repeated freezing and thawing.

Precautions

SERPINA10 Antibody (monoclonal) (M02) is for research use only and not for use in diagnostic or therapeutic procedures.

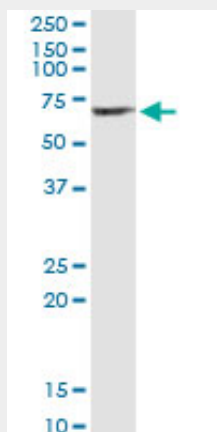
SERPINA10 Antibody (monoclonal) (M02) - Protocols

Provided below are standard protocols that you may find useful for product applications.

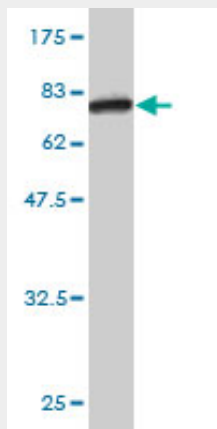
- [Western Blot](#)

- [Blocking Peptides](#)
- [Dot Blot](#)
- [Immunohistochemistry](#)
- [Immunofluorescence](#)
- [Immunoprecipitation](#)
- [Flow Cytometry](#)
- [Cell Culture](#)

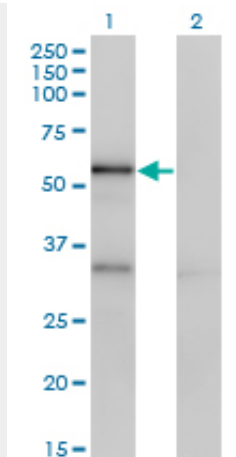
SERPINA10 Antibody (monoclonal) (M02) - Images



Immunoprecipitation of SERPINA10 transfected lysate using anti-SERPINA10 monoclonal antibody and Protein A Magnetic Bead ([U0007](#)), and immunoblotted with SERPINA10 MaxPab rabbit polyclonal antibody.



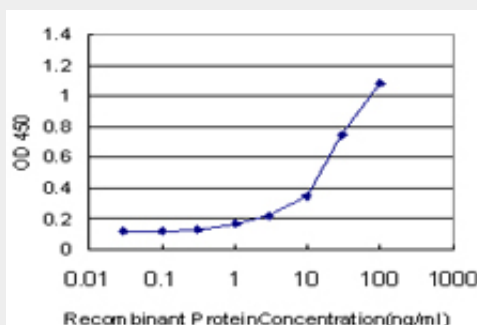
Antibody Reactive Against Recombinant Protein. Western Blot detection against Immunogen (72.27 KDa) .



Western Blot analysis of SERPINA10 expression in transfected 293T cell line by SERPINA10 monoclonal antibody (M02), clone 1E11.

Lane 1: SERPINA10 transfected lysate(50.7 KDa).

Lane 2: Non-transfected lysate.



Detection limit for recombinant GST tagged SERPINA10 is approximately 3ng/ml as a capture antibody.

SERPINA10 Antibody (monoclonal) (M02) - Background

The protein encoded by this gene belongs to the serpin family. It is predominantly expressed in the liver and secreted in plasma. It inhibits the activity of coagulation factors Xa and XIa in the presence of protein Z, calcium and phospholipid. Mutations in this gene are associated with venous thrombosis. Alternatively spliced transcript variants have been found for this gene.

SERPINA10 Antibody (monoclonal) (M02) - References

Variation at the NFATC2 Locus Increases the Risk of Thiazolidinedione-Induced Edema in the Diabetes REduction Assessment with ramipril and rosiglitazone Medication (DREAM) Study. Bailey SD, et al. Diabetes Care, 2010 Jul 13. PMID 20628086. Basis for the specificity and activation of the serpin protein Z-dependent proteinase inhibitor (ZPI) as an inhibitor of membrane-associated factor Xa. Huang X, et al. J Biol Chem, 2010 Jun 25. PMID 20427285. Protein Z and protein Z-dependent protease inhibitor and renal tubules. Broze GJ Jr, et al. Thromb Haemost, 2010 Feb 1. PMID 20024489. Gene-centric association signals for lipids and apolipoproteins identified via the HumanCVD BeadChip. Talmud PJ, et al. Am J Hum Genet, 2009 Nov. PMID 19913121. A computational modeling and molecular dynamics study of the Michaelis complex of human protein Z-dependent protease inhibitor (ZPI) and factor Xa (FXa). Chandrasekaran V, et al. J Mol Model, 2009 Aug. PMID 19172319.