

SERPINA12 Antibody (monoclonal) (M01)**Mouse monoclonal antibody raised against a full length recombinant SERPINA12.****Catalog # AT3817a****Specification**

SERPINA12 Antibody (monoclonal) (M01) - Product Information

Application	WB, IP, E
Primary Accession	Q8IW75
Other Accession	BC040857
Reactivity	Human
Host	mouse
Clonality	Monoclonal
Isotype	IgG2a Kappa
Calculated MW	47175

SERPINA12 Antibody (monoclonal) (M01) - Additional Information**Gene ID** 145264**Other Names**

SerpA12, OL-64, Visceral adipose tissue-derived serine protease inhibitor, Vaspin, Visceral adipose-specific serpin, SERPINA12

Target/Specificity

SERPINA12 (AAH40857, 1 a.a. ~ 414 a.a) full-length recombinant protein with GST tag. MW of the GST tag alone is 26 KDa.

Dilution

WB~~1:500~1000

IP~~N/A

E~~N/A

Format

Clear, colorless solution in phosphate buffered saline, pH 7.2 .

Storage

Store at -20°C or lower. Aliquot to avoid repeated freezing and thawing.

Precautions

SERPINA12 Antibody (monoclonal) (M01) is for research use only and not for use in diagnostic or therapeutic procedures.

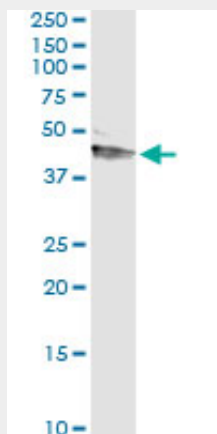
SERPINA12 Antibody (monoclonal) (M01) - Protocols

Provided below are standard protocols that you may find useful for product applications.

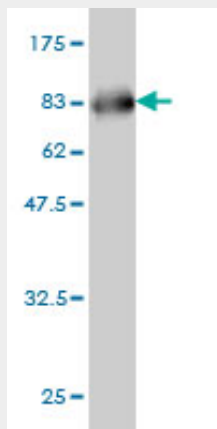
- [Western Blot](#)

- [Blocking Peptides](#)
- [Dot Blot](#)
- [Immunohistochemistry](#)
- [Immunofluorescence](#)
- [Immunoprecipitation](#)
- [Flow Cytometry](#)
- [Cell Culture](#)

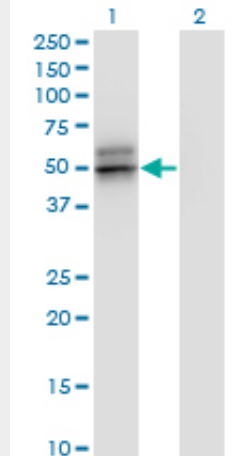
SERPINA12 Antibody (monoclonal) (M01) - Images



Immunoprecipitation of SERPINA12 transfected lysate using anti-SERPINA12 monoclonal antibody and Protein A Magnetic Bead ([U0007](#)), and immunoblotted with SERPINA12 MaxPab rabbit polyclonal antibody.

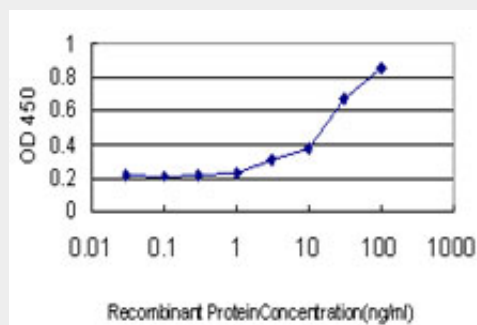


Antibody Reactive Against Recombinant Protein. Western Blot detection against Immunogen (71.28 KDa) .



Western Blot analysis of SERPINA12 expression in transfected 293T cell line by SERPINA12 monoclonal antibody (M01), clone 3B3.

Lane 1: SERPINA12 transfected lysate(47.2 KDa).
Lane 2: Non-transfected lysate.



Detection limit for recombinant GST tagged SERPINA12 is approximately 3ng/ml as a capture antibody.

SERPINA12 Antibody (monoclonal) (M01) - References

Variation at the NFATC2 Locus Increases the Risk of Thiazolinedione-Induced Edema in the Diabetes REduction Assessment with ramipril and rosiglitazone Medication (DREAM) Study. Bailey SD, et al. Diabetes Care, 2010 Jul 13. PMID 20628086. Personalized smoking cessation: interactions between nicotine dose, dependence and quit-success genotype score. Rose JE, et al. Mol Med, 2010 Jul-Aug. PMID 20379614. Circadian rhythm of serum vaspin in healthy male volunteers: relation to meals. Jeong E, et al. J Clin Endocrinol Metab, 2010 Apr. PMID 20156923. Serum chemerin and vaspin in non-alcoholic fatty liver disease. Kukla M, et al. Scand J Gastroenterol, 2010. PMID 20095887. Association between serum vaspin concentrations and visceral adipose tissue in Korean subjects. Chang HM, et al. Metabolism, 2010 Sep. PMID 20060144.