

## **SERPINC1 Antibody (monoclonal) (M02)**

Mouse monoclonal antibody raised against a full length recombinant SERPINC1.

Catalog # AT3823a

### **Specification**

---

#### **SERPINC1 Antibody (monoclonal) (M02) - Product Information**

Application	WB, E
Primary Accession	<a href="#">P01008</a>
Other Accession	<a href="#">BC022309</a>
Reactivity	Human
Host	mouse
Clonality	Monoclonal
Isotype	IgG2b Kappa
Calculated MW	52602

#### **SERPINC1 Antibody (monoclonal) (M02) - Additional Information**

**Gene ID** 462

##### **Other Names**

Antithrombin-III, ATIII, Serpin C1, SERPINC1, AT3

##### **Target/Specificity**

SERPINC1 (AAH22309.1, 1 a.a. ~ 259 a.a) full-length recombinant protein with GST tag. MW of the GST tag alone is 26 KDa.

##### **Dilution**

WB~~1:500~1000

E~~N/A

##### **Format**

Clear, colorless solution in phosphate buffered saline, pH 7.2 .

##### **Storage**

Store at -20°C or lower. Aliquot to avoid repeated freezing and thawing.

##### **Precautions**

SERPINC1 Antibody (monoclonal) (M02) is for research use only and not for use in diagnostic or therapeutic procedures.

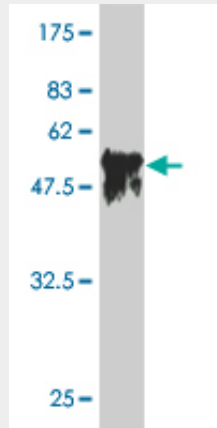
#### **SERPINC1 Antibody (monoclonal) (M02) - Protocols**

Provided below are standard protocols that you may find useful for product applications.

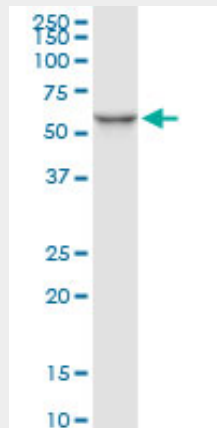
- [Western Blot](#)
- [Blocking Peptides](#)
- [Dot Blot](#)

- [Immunohistochemistry](#)
- [Immunofluorescence](#)
- [Immunoprecipitation](#)
- [Flow Cytometry](#)
- [Cell Culture](#)

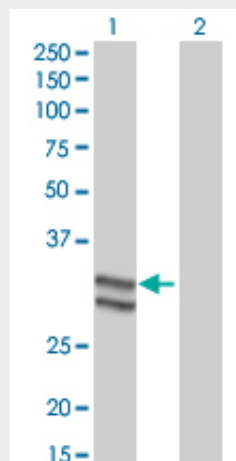
### SERPINC1 Antibody (monoclonal) (M02) - Images



Antibody Reactive Against Recombinant Protein. Western Blot detection against Immunogen (54.23 KDa) .

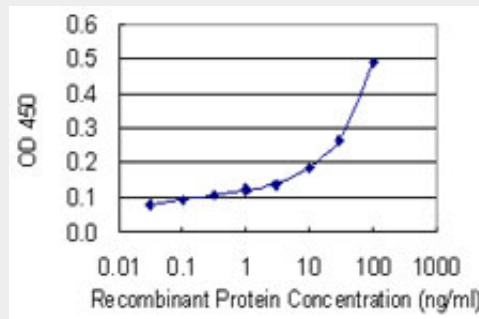


SERPINC1 monoclonal antibody (M02), clone 2B12. Western Blot analysis of SERPINC1 expression in human kidney.



Western Blot analysis of SERPINC1 expression in transfected 293T cell line by SERPINC1 monoclonal antibody (M02), clone 2B12.

Lane 1: SERPINC1 transfected lysate(29.1 KDa).  
Lane 2: Non-transfected lysate.



Detection limit for recombinant GST tagged SERPINC1 is 3 ng/ml as a capture antibody.

### **SERPINC1 Antibody (monoclonal) (M02) - Background**

The protein encoded by this gene is a plasma protease inhibitor and a member of the serpin superfamily. This protein inhibits thrombin as well as other activated serine proteases of the coagulation system, and it regulates the blood coagulation cascade. The protein includes two functional domains: the heparin binding-domain at the N-terminus of the mature protein, and the reactive site domain at the C-terminus. The inhibitory activity is enhanced by the presence of heparin. More than 120 mutations have been identified for this gene, many of which are known to cause antithrombin-III deficiency.

### **SERPINC1 Antibody (monoclonal) (M02) - References**

Antithrombin Cambridge II(A384S) mutation frequency and antithrombin activity levels in 120 of deep venous thrombosis and 150 of cerebral infarction patients in a single center in Southern China. Zhang GS, et al. *Blood Coagul Fibrinolysis*, 2010 Sep. PMID 20683322. A genetic association study of maternal and fetal candidate genes that predispose to preterm prelabor rupture of membranes (PROM). Romero R, et al. *Am J Obstet Gynecol*, 2010 Jul 29. PMID 20673868. Variation at the NFATC2 Locus Increases the Risk of Thiazolidinedione-Induced Edema in the Diabetes REduction Assessment with ramipril and rosiglitazone Medication (DREAM) Study. Bailey SD, et al. *Diabetes Care*, 2010 Jul 13. PMID 20628086. Identification of fetal and maternal single nucleotide polymorphisms in candidate genes that predispose to spontaneous preterm labor with intact membranes. Romero R, et al. *Am J Obstet Gynecol*, 2010 May. PMID 20452482. Polymorphisms in innate immunity genes and risk of childhood leukemia. Han S, et al. *Hum Immunol*, 2010 Jul. PMID 20438785.