

SERPINE1 Antibody (monoclonal) (M01)**Mouse monoclonal antibody raised against a partial recombinant SERPINE1.****Catalog # AT3824a****Specification**

SERPINE1 Antibody (monoclonal) (M01) - Product Information

Application	WB, IP, E
Primary Accession	P05121
Other Accession	NM_000602
Reactivity	Human
Host	mouse
Clonality	Monoclonal
Isotype	IgG2a Kappa
Calculated MW	45060

SERPINE1 Antibody (monoclonal) (M01) - Additional Information**Gene ID** 5054**Other Names**

Plasminogen activator inhibitor 1, PAI, PAI-1, Endothelial plasminogen activator inhibitor, Serpin E1, SERPINE1, PAI1, PLANH1

Target/Specificity

SERPINE1 (NP_000593, 86 a.a. ~ 185 a.a) partial recombinant protein with GST tag. MW of the GST tag alone is 26 KDa.

Dilution

WB~~1:500~1000

IP~~N/A

E~~N/A

Format

Clear, colorless solution in phosphate buffered saline, pH 7.2 .

Storage

Store at -20°C or lower. Aliquot to avoid repeated freezing and thawing.

Precautions

SERPINE1 Antibody (monoclonal) (M01) is for research use only and not for use in diagnostic or therapeutic procedures.

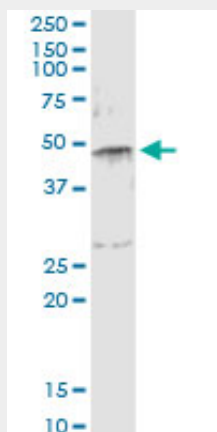
SERPINE1 Antibody (monoclonal) (M01) - Protocols

Provided below are standard protocols that you may find useful for product applications.

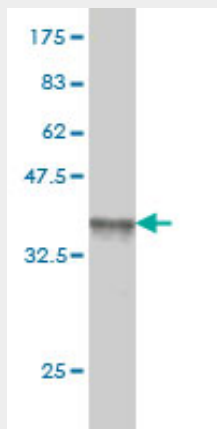
- [Western Blot](#)

- [Blocking Peptides](#)
- [Dot Blot](#)
- [Immunohistochemistry](#)
- [Immunofluorescence](#)
- [Immunoprecipitation](#)
- [Flow Cytometry](#)
- [Cell Culture](#)

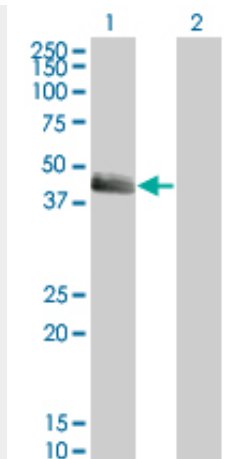
SERPINE1 Antibody (monoclonal) (M01) - Images



Immunoprecipitation of SERPINE1 transfected lysate using anti-SERPINE1 monoclonal antibody and Protein A Magnetic Bead ([U0007](#)), and immunoblotted with SERPINE1 MaxPab rabbit polyclonal antibody.



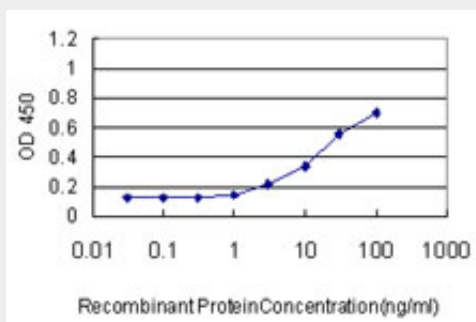
Antibody Reactive Against Recombinant Protein. Western Blot detection against Immunogen (36.63 KDa) .



Western Blot analysis of SERPINE1 expression in transfected 293T cell line by SERPINE1 monoclonal antibody (M01), clone 3F2.

Lane 1: SERPINE1 transfected lysate(45.1 KDa).

Lane 2: Non-transfected lysate.



Detection limit for recombinant GST tagged SERPINE1 is approximately 0.3ng/ml as a capture antibody.

SERPINE1 Antibody (monoclonal) (M01) - Background

This gene encodes a member of the serine proteinase inhibitor (serpin) superfamily. This member is the principal inhibitor of tissue plasminogen activator (tPA) and urokinase (uPA), and hence is an inhibitor of fibrinolysis. Defects in this gene are the cause of plasminogen activator inhibitor-1 deficiency (PAI-1 deficiency), and high concentrations of the gene product are associated with thrombophilia. Alternatively spliced transcript variants encoding different isoforms have been found for this gene.

SERPINE1 Antibody (monoclonal) (M01) - References

1.Extracellular Matrix Remodeling by Bone Marrow Fibroblast-like Cells Correlates with Disease Progression in Multiple Myeloma.Slany A, Haudek-Prinz V, Meshcheryakova A, Bileck A, Lamm W, Zielinski C, Gerner C, Drach JJ Proteome Res. 2013 Dec 2.