

**SERPING1 Antibody (monoclonal) (M01)****Mouse monoclonal antibody raised against a full length recombinant SERPING1.****Catalog # AT3826a****Specification**

---

**SERPING1 Antibody (monoclonal) (M01) - Product Information**

Application	WB, IHC, IP, E
Primary Accession	<a href="#">P05155</a>
Other Accession	<a href="#">BC011171</a>
Reactivity	Human
Host	mouse
Clonality	Monoclonal
Isotype	IgG2a Kappa
Calculated MW	55154

**SERPING1 Antibody (monoclonal) (M01) - Additional Information****Gene ID** 710**Other Names**

Plasma protease C1 inhibitor, C1 Inh, C1Inh, C1 esterase inhibitor, C1-inhibiting factor, Serpin G1, SERPING1, C1IN, C1NH

**Target/Specificity**

SERPING1 (AAH11171, 1 a.a. ~ 500 a.a) full-length recombinant protein with GST tag. MW of the GST tag alone is 26 KDa.

**Dilution**

WB~~1:500~1000

IHC~~1:100~500

IP~~N/A

E~~N/A

**Format**

Clear, colorless solution in phosphate buffered saline, pH 7.2 .

**Storage**

Store at -20°C or lower. Aliquot to avoid repeated freezing and thawing.

**Precautions**

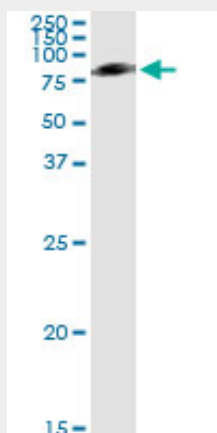
SERPING1 Antibody (monoclonal) (M01) is for research use only and not for use in diagnostic or therapeutic procedures.

**SERPING1 Antibody (monoclonal) (M01) - Protocols**

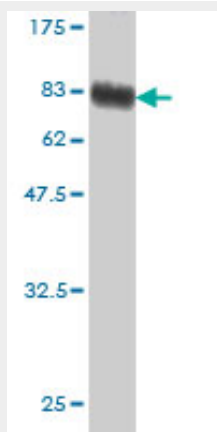
Provided below are standard protocols that you may find useful for product applications.

- [Western Blot](#)
- [Blocking Peptides](#)
- [Dot Blot](#)
- [Immunohistochemistry](#)
- [Immunofluorescence](#)
- [Immunoprecipitation](#)
- [Flow Cytometry](#)
- [Cell Culture](#)

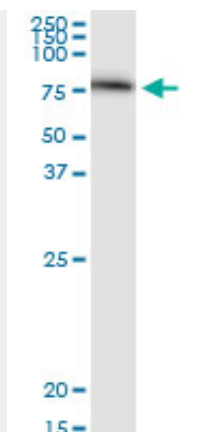
### SERPING1 Antibody (monoclonal) (M01) - Images



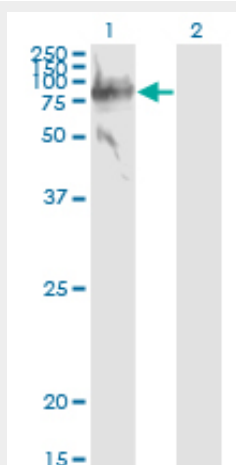
Immunoprecipitation of SERPING1 transfected lysate using anti-SERPING1 monoclonal antibody and Protein A Magnetic Bead ([U0007](#)), and immunoblotted with SERPING1 MaxPab rabbit polyclonal antibody.



Antibody Reactive Against Recombinant Protein. Western Blot detection against Immunogen (80.52 KDa) .



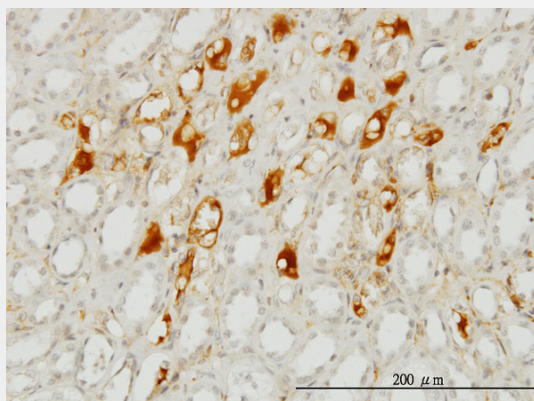
SERPING1 monoclonal antibody (M01), clone 3F4-1D9. Western Blot analysis of SERPING1 expression in human liver.



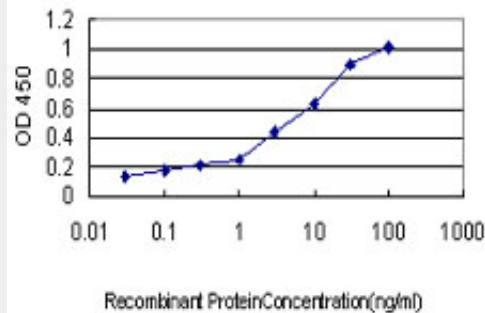
Western Blot analysis of SERPING1 expression in transfected 293T cell line by SERPING1 monoclonal antibody (M01), clone 3F4-1D9.

Lane 1: SERPING1 transfected lysate (Predicted MW: 55.2 KDa).

Lane 2: Non-transfected lysate.



Immunoperoxidase of monoclonal antibody to SERPING1 on formalin-fixed paraffin-embedded human kidney. [antibody concentration 1 ug/ml]



Detection limit for recombinant GST tagged SERPING1 is approximately 0.1ng/ml as a capture antibody.

### **SERPING1 Antibody (monoclonal) (M01) - Background**

This gene encodes a highly glycosylated plasma protein involved in the regulation of the complement cascade. Its protein inhibits activated C1r and C1s of the first complement component and thus regulates complement activation. Deficiency of this protein is associated with hereditary angioneurotic oedema (HANE). Alternative splicing results in multiple transcript variants encoding the same isoform.

### **SERPING1 Antibody (monoclonal) (M01) - References**

Evaluation of candidate stromal epithelial cross-talk genes identifies association between risk of serous ovarian cancer and TERT, a cancer susceptibility hot-spot. Johnatty SE, et al. PLoS Genet, 2010 Jul 8. PMID 20628624. The effect of genetic variants in SERPING1 on the risk of neovascular age-related macular degeneration. Lee AY, et al. Br J Ophthalmol, 2010 Jul. PMID 20606025. Determination of a gene and environment risk model for age-related macular degeneration. Gibson J, et al. Br J Ophthalmol, 2010 Jun 24. PMID 20576771. Polymorphisms in innate immunity genes and risk of childhood leukemia. Han S, et al. Hum Immunol, 2010 Jul. PMID 20438785. Risk of meningioma and common variation in genes related to innate immunity. Rajaraman P, et al. Cancer Epidemiol Biomarkers Prev, 2010 May. PMID 20406964.