

**SERPINI1 Antibody (monoclonal) (M01)**

Mouse monoclonal antibody raised against a full length recombinant SERPINI1.

Catalog # AT3828a

**Specification**

---

**SERPINI1 Antibody (monoclonal) (M01) - Product Information**

Application	WB, IHC, E
Primary Accession	<a href="#">Q99574</a>
Other Accession	<a href="#">BC018043</a>
Reactivity	Human
Host	mouse
Clonality	Monoclonal
Isotype	IgG1 Kappa
Calculated MW	46427

**SERPINI1 Antibody (monoclonal) (M01) - Additional Information**

**Gene ID** 5274

**Other Names**

Neuroserpin, Peptidase inhibitor 12, PI-12, Serpin I1, SERPINI1, PI12

**Target/Specificity**

SERPINI1 (AAH18043, 17 a.a. ~ 410 a.a) full-length recombinant protein with GST tag. MW of the GST tag alone is 26 KDa.

**Dilution**

WB~~1:500~1000

IHC~~1:100~500

E~~N/A

**Format**

Clear, colorless solution in phosphate buffered saline, pH 7.2 .

**Storage**

Store at -20°C or lower. Aliquot to avoid repeated freezing and thawing.

**Precautions**

SERPINI1 Antibody (monoclonal) (M01) is for research use only and not for use in diagnostic or therapeutic procedures.

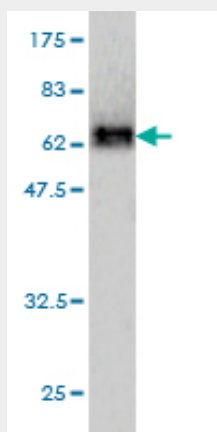
**SERPINI1 Antibody (monoclonal) (M01) - Protocols**

Provided below are standard protocols that you may find useful for product applications.

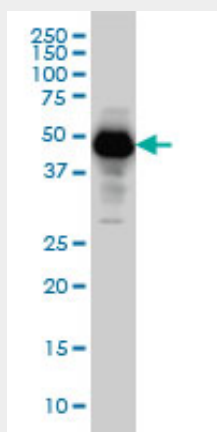
- [Western Blot](#)
- [Blocking Peptides](#)

- [Dot Blot](#)
- [Immunohistochemistry](#)
- [Immunofluorescence](#)
- [Immunoprecipitation](#)
- [Flow Cytometry](#)
- [Cell Culture](#)

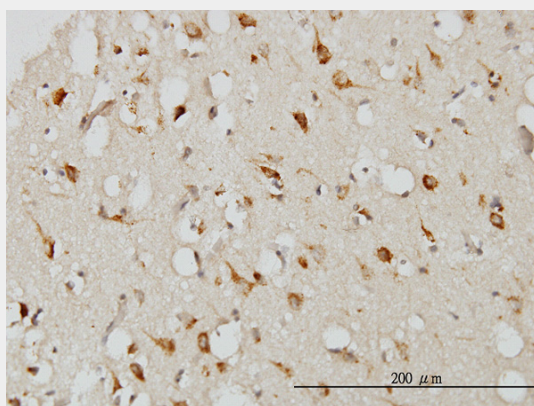
### SERPINI1 Antibody (monoclonal) (M01) - Images



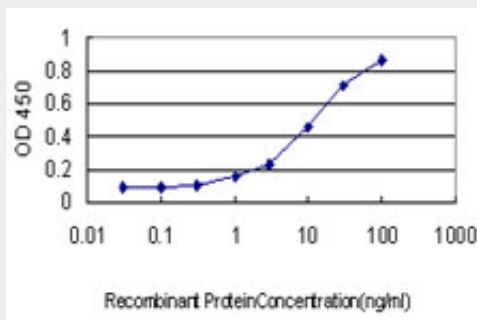
Antibody Reactive Against Recombinant Protein. Western Blot detection against Immunogen (69.08 kDa) .



SERPINI1 monoclonal antibody (M01), clone 1D10 Western Blot analysis of SERPINI1 expression in HeLa ( (Cat # AT3828a )



Immunoperoxidase of monoclonal antibody to SERPINI1 on formalin-fixed paraffin-embedded human cerebral cortex. [antibody concentration 3 ug/ml]



Detection limit for recombinant GST tagged SERPINI1 is approximately 0.3ng/ml as a capture antibody.

### **SERPINI1 Antibody (monoclonal) (M01) - Background**

This gene encodes a member of the serpin superfamily of serine proteinase inhibitors. The protein is primarily secreted by axons in the brain, and preferentially reacts with and inhibits tissue-type plasminogen activator. It is thought to play a role in the regulation of axonal growth and the development of synaptic plasticity. Mutations in this gene result in familial encephalopathy with neuroserpin inclusion bodies (FENIB), which is a dominantly inherited form of familial encephalopathy and epilepsy characterized by the accumulation of mutant neuroserpin polymers. Multiple alternatively spliced variants, encoding the same protein, have been identified.

### **SERPINI1 Antibody (monoclonal) (M01) - References**

1. Proteomic analysis of podocyte exosome-enriched fraction from normal human urine. Prunotto M, Farina A, Lane L, Pernin A, Schifferli J, Hochstrasser DF, Lescuyer P, Moll S. *J Proteomics*. 2013 Jan 30. doi:pii: S1874-3919(13)00040-7. 10.1016/j.jprot.2013.01.012. [Epub ahead of print]