

SETX Antibody (monoclonal) (M05)**Mouse monoclonal antibody raised against a partial recombinant SETX.****Catalog # AT3834a****Specification**

SETX Antibody (monoclonal) (M05) - Product Information

Application	WB, IF, E
Primary Accession	Q7Z333
Other Accession	NM_015046
Reactivity	Human, Mouse, Rat
Host	mouse
Clonality	Monoclonal
Isotype	IgG1 Kappa
Calculated MW	302880

SETX Antibody (monoclonal) (M05) - Additional Information**Gene ID** 23064**Other Names**

Probable helicase senataxin, 364-, Amyotrophic lateral sclerosis 4 protein, SEN1 homolog, SETX, ALS4, KIAA0625, SCAR1

Target/Specificity

SETX (NP_055861.2, 2579 a.a. ~ 2676 a.a) partial recombinant protein with GST tag. MW of the GST tag alone is 26 KDa.

Dilution

WB~~1:500~1000

IF~~1:50~200

E~~N/A

Format

Clear, colorless solution in phosphate buffered saline, pH 7.2 .

Storage

Store at -20°C or lower. Aliquot to avoid repeated freezing and thawing.

Precautions

SETX Antibody (monoclonal) (M05) is for research use only and not for use in diagnostic or therapeutic procedures.

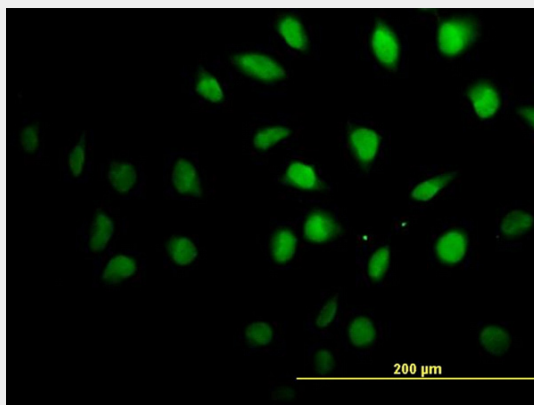
SETX Antibody (monoclonal) (M05) - Protocols

Provided below are standard protocols that you may find useful for product applications.

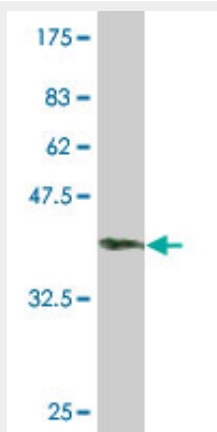
- [Western Blot](#)

- [Blocking Peptides](#)
- [Dot Blot](#)
- [Immunohistochemistry](#)
- [Immunofluorescence](#)
- [Immunoprecipitation](#)
- [Flow Cytometry](#)
- [Cell Culture](#)

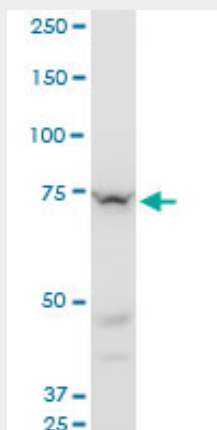
SETX Antibody (monoclonal) (M05) - Images



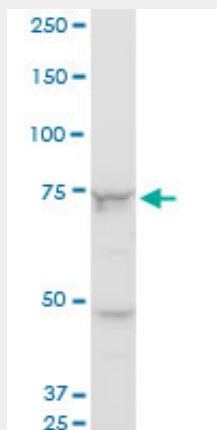
Immunofluorescence of monoclonal antibody to SETX on HeLa cell. [antibody concentration 10 ug/ml]



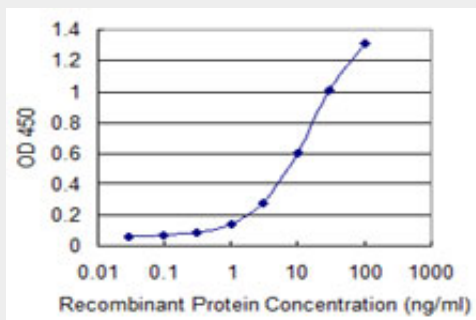
Antibody Reactive Against Recombinant Protein. Western Blot detection against Immunogen (36.52 KDa) .



SETX monoclonal antibody (M05), clone 2A9. Western Blot analysis of SETX expression in PC-12((Cat # AT3834a)



SETX monoclonal antibody (M05), clone 2A9. Western Blot analysis of SETX expression in NIH/3T3((Cat # AT3834a)



Detection limit for recombinant GST tagged SETX is 0.3 ng/ml as a capture antibody.

SETX Antibody (monoclonal) (M05) - Background

This gene encodes a protein named for its homology to the Sen1p protein of fungi which has RNA helicase activity encoded by a domain at the C-terminal end of the protein. The protein encoded by this gene contains a DNA/RNA helicase domain at its C-terminal end which suggests that it may be involved in both DNA and RNA processing. Mutations in this gene have been associated with ataxia-ocular apraxia-2 (AOA2) and an autosomal dominant form of juvenile amyotrophic lateral sclerosis (ALS4).

SETX Antibody (monoclonal) (M05) - References

Personalized smoking cessation: interactions between nicotine dose, dependence and quit-success genotype score. Rose JE, et al. Mol Med, 2010 Jul-Aug. PMID 20379614. Exon deletions and intragenic insertions are not rare in ataxia with oculomotor apraxia 2. Bernard V, et al. BMC Med Genet, 2009 Sep 11. PMID 19744353. Characterization of two novel SETX mutations in AOA2 patients reveals aspects of the pathophysiological role of senataxin. Airolidi G, et al. Neurogenetics, 2010 Feb. PMID 19593598. Ataxia with oculomotor apraxia type 2: novel mutations in six patients with juvenile age of onset and elevated serum alpha-fetoprotein. Bernard V, et al. Neuropediatrics, 2008 Dec. PMID 19569000. Functional role for senataxin, defective in ataxia oculomotor apraxia type 2, in transcriptional regulation. Suraweera A, et al. Hum Mol Genet, 2009 Sep 15. PMID 19515850.