

SGK Antibody (monoclonal) (M01)**Mouse monoclonal antibody raised against a full length recombinant SGK.****Catalog # AT3854a****Specification**

SGK Antibody (monoclonal) (M01) - Product Information

Application	WB, IHC, IF, E
Primary Accession	O00141
Other Accession	BC001263
Reactivity	Human
Host	mouse
Clonality	Monoclonal
Isotype	IgG1 kappa
Calculated MW	48942

SGK Antibody (monoclonal) (M01) - Additional Information**Gene ID** 6446**Other Names**

Serine/threonine-protein kinase Sgk1, Serum/glucocorticoid-regulated kinase 1, SGK1, SGK

Target/Specificity

SGK (AAH01263.1, 1 a.a. ~ 431 a.a) full-length recombinant protein with GST tag. MW of the GST tag alone is 26 KDa.

Dilution

WB~~1:500~1000

IHC~~1:100~500

IF~~1:50~200

E~~N/A

Format

Clear, colorless solution in phosphate buffered saline, pH 7.2 .

Storage

Store at -20°C or lower. Aliquot to avoid repeated freezing and thawing.

Precautions

SGK Antibody (monoclonal) (M01) is for research use only and not for use in diagnostic or therapeutic procedures.

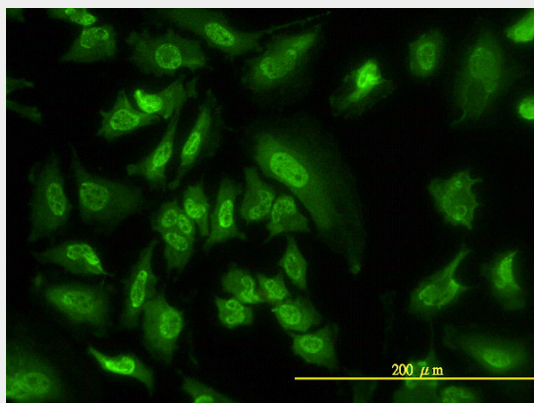
SGK Antibody (monoclonal) (M01) - Protocols

Provided below are standard protocols that you may find useful for product applications.

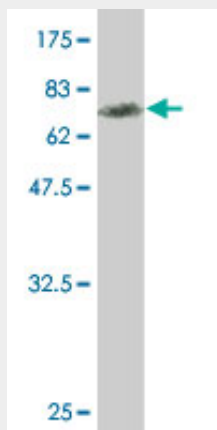
- [Western Blot](#)

- [Blocking Peptides](#)
- [Dot Blot](#)
- [Immunohistochemistry](#)
- [Immunofluorescence](#)
- [Immunoprecipitation](#)
- [Flow Cytometry](#)
- [Cell Culture](#)

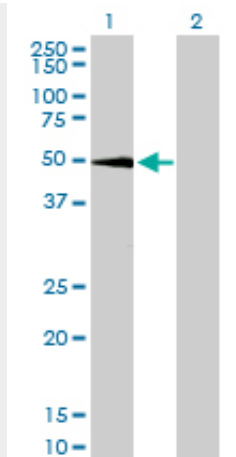
SGK Antibody (monoclonal) (M01) - Images



Immunofluorescence of monoclonal antibody to SGK on HeLa cell. [antibody concentration 10 ug/ml]



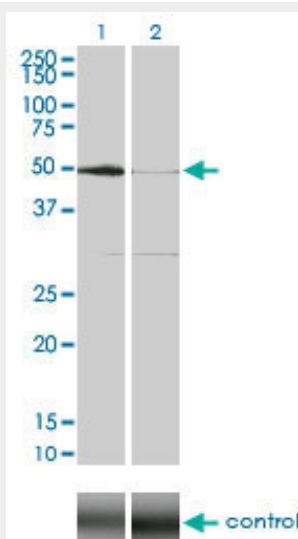
Antibody Reactive Against Recombinant Protein. Western Blot detection against Immunogen (73.04 KDa) .



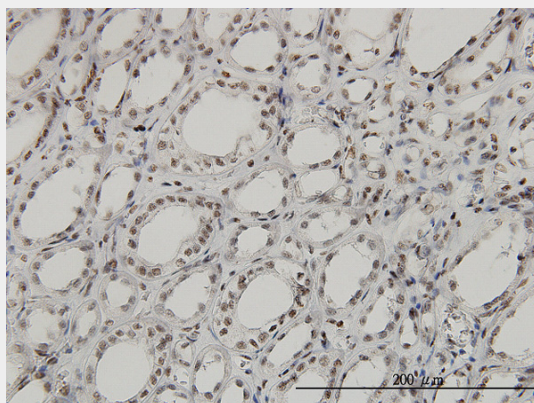
Western Blot analysis of SGK expression in transfected 293T cell line by SGK monoclonal antibody (M01), clone 4D7-G3.

Lane 1: SGK transfected lysate(48.9 KDa).

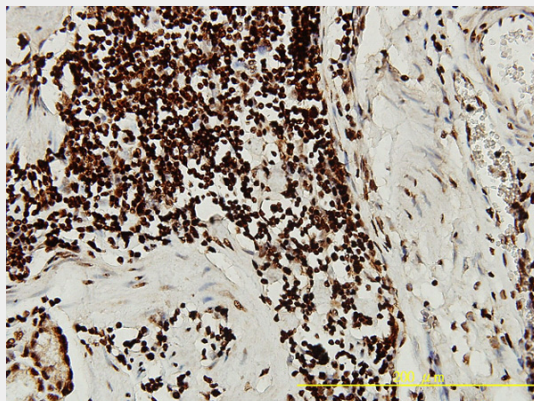
Lane 2: Non-transfected lysate.



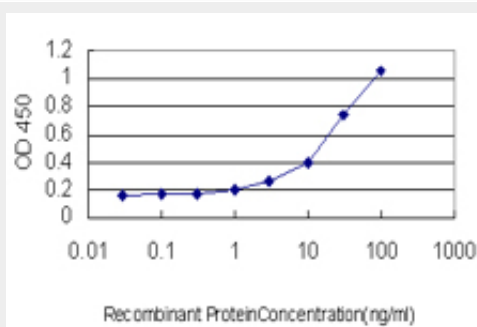
Western blot analysis of SGK over-expressed 293 cell line, cotransfected with SGK Validated Chimera RNAi (Cat # AT3854a)



Immunoperoxidase of monoclonal antibody to SGK on formalin-fixed paraffin-embedded human kidney. [antibody concentration 3 ug/ml]



Immunoperoxidase of monoclonal antibody to SGK on formalin-fixed paraffin-embedded human stomach tissue. [antibody concentration 5 ug/ml]



Detection limit for recombinant GST tagged SGK is approximately 1ng/ml as a capture antibody.

SGK Antibody (monoclonal) (M01) - Background

This gene encodes a serine/threonine protein kinase that plays an important role in cellular stress response. This kinase activates certain potassium, sodium, and chloride channels, suggesting an involvement in the regulation of processes such as cell survival, neuronal excitability, and renal sodium excretion. High levels of expression of this gene may contribute to conditions such as hypertension and diabetic nephropathy. Several alternatively spliced transcript variants encoding different isoforms have been noted for this gene.

SGK Antibody (monoclonal) (M01) - References

Variation at the NFATC2 Locus Increases the Risk of Thiazolidinedione-Induced Edema in the Diabetes REduction Assessment with ramipril and rosiglitazone Medication (DREAM) Study. Bailey SD, et al. Diabetes Care, 2010 Jul 13. PMID 20628086. Serum and glucocorticoid-induced kinase (SGK) 1 and the epithelial sodium channel are regulated by multiple with no lysine (WNK) family members. Heise CJ, et al. J Biol Chem, 2010 Aug 13. PMID 20525693. Phosphopeptide screen uncovers novel phosphorylation sites of Nedd4-2 that potentiate its inhibition of the epithelial Na⁺ channel. Hallows KR, et al. J Biol Chem, 2010 Jul 9. PMID 20466724. Phospholipase D stabilizes HDM2 through an mTORC2/SGK1 pathway. Lyo D, et al. Biochem Biophys Res Commun, 2010 May 28. PMID 20438709. mTOR complex-2 activates ENaC by phosphorylating SGK1. Lu M, et al. J Am Soc Nephrol, 2010 May. PMID 20338997.