

**SGK2 Antibody (monoclonal) (M07)****Mouse monoclonal antibody raised against a partial recombinant SGK2.****Catalog # AT3856a****Specification**

---

**SGK2 Antibody (monoclonal) (M07) - Product Information**

Application	WB, IF, E
Primary Accession	<a href="#">Q9HBY8</a>
Other Accession	<a href="#">BC065511</a>
Reactivity	Human
Host	mouse
Clonality	Monoclonal
Isotype	IgG1 Kappa
Calculated MW	41175

**SGK2 Antibody (monoclonal) (M07) - Additional Information****Gene ID** 10110**Other Names**

Serine/threonine-protein kinase Sgk2, Serum/glucocorticoid-regulated kinase 2, SGK2

**Target/Specificity**

SGK2 (AAH65511, 293 a.a. ~ 367 a.a) partial recombinant protein with GST tag. MW of the GST tag alone is 26 KDa.

**Dilution**

WB~~1:500~1000

IF~~1:50~200

E~~N/A

**Format**

Clear, colorless solution in phosphate buffered saline, pH 7.2 .

**Storage**

Store at -20°C or lower. Aliquot to avoid repeated freezing and thawing.

**Precautions**

SGK2 Antibody (monoclonal) (M07) is for research use only and not for use in diagnostic or therapeutic procedures.

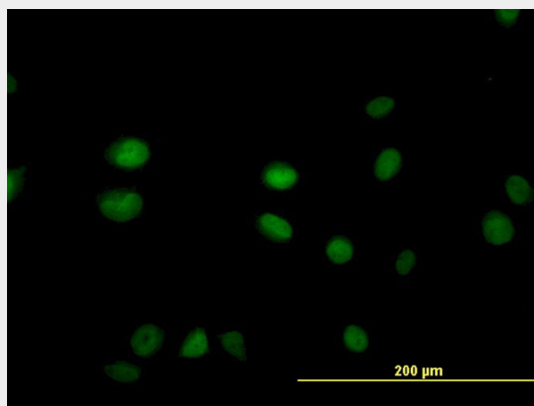
**SGK2 Antibody (monoclonal) (M07) - Protocols**

Provided below are standard protocols that you may find useful for product applications.

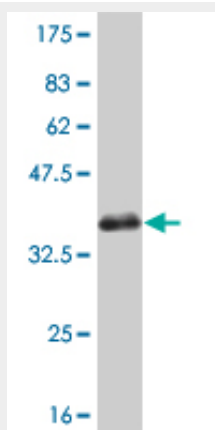
- [Western Blot](#)
- [Blocking Peptides](#)

- [Dot Blot](#)
- [Immunohistochemistry](#)
- [Immunofluorescence](#)
- [Immunoprecipitation](#)
- [Flow Cytometry](#)
- [Cell Culture](#)

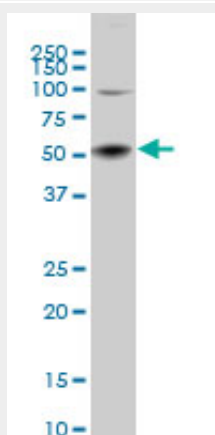
## SGK2 Antibody (monoclonal) (M07) - Images



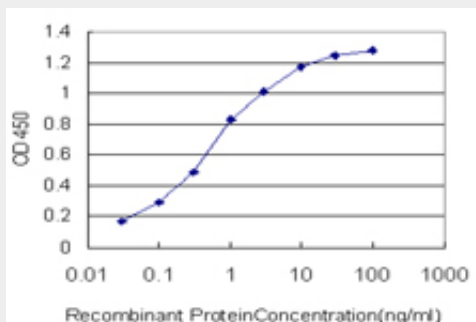
Immunofluorescence of monoclonal antibody to SGK2 on HeLa cell. [antibody concentration 30 ug/ml]



Antibody Reactive Against Recombinant Protein. Western Blot detection against Immunogen (33.88 KDa) .



SGK2 monoclonal antibody (M07), clone 2F6 Western Blot analysis of SGK2 expression in IMR-32 (Cat # AT3856a )



Detection limit for recombinant GST tagged SGK2 is approximately 0.03ng/ml as a capture antibody.

### **SGK2 Antibody (monoclonal) (M07) - Background**

This gene encodes a serine/threonine protein kinase. Although this gene product is similar to serum- and glucocorticoid-induced protein kinase (SGK), this gene is not induced by serum or glucocorticoids. This gene is induced in response to signals that activate phosphatidylinositol 3-kinase, which is also true for SGK. Two alternate transcripts encoding two different isoforms have been described.

### **SGK2 Antibody (monoclonal) (M07) - References**

Sgk kinases and their role in epithelial transport. Loffing J, et al. Annu Rev Physiol, 2006. PMID 16460280. Transcriptional maps of 10 human chromosomes at 5-nucleotide resolution. Cheng J, et al. Science, 2005 May 20. PMID 15790807. Regulation of cardiac shal-related potassium channel Kv 4.3 by serum- and glucocorticoid-inducible kinase isoforms in Xenopus oocytes. Baltaev R, et al. Pflugers Arch, 2005 Apr. PMID 15578212. The status, quality, and expansion of the NIH full-length cDNA project: the Mammalian Gene Collection (MGC). Gerhard DS, et al. Genome Res, 2004 Oct. PMID 15489334. Regulation of KCNE1-dependent K(+) current by the serum and glucocorticoid-inducible kinase (SGK) isoforms. Embark HM, et al. Pflugers Arch, 2003 Feb. PMID 12634932.