

**SH2B Antibody (monoclonal) (M01)****Mouse monoclonal antibody raised against a partial recombinant SH2B.****Catalog # AT3861a****Specification**

---

**SH2B Antibody (monoclonal) (M01) - Product Information**

Application	IF, WB, E
Primary Accession	<a href="#">Q9NRF2</a>
Other Accession	<a href="#">BC010704</a>
Reactivity	Human
Host	mouse
Clonality	Monoclonal
Isotype	IgG1 Kappa
Calculated MW	79366

**SH2B Antibody (monoclonal) (M01) - Additional Information****Gene ID** 25970**Other Names**

SH2B adapter protein 1, Pro-rich, PH and SH2 domain-containing signaling mediator, PSM, SH2 domain-containing protein 1B, SH2B1, KIAA1299, SH2B

**Target/Specificity**

SH2B (AAH10704, 327 a.a. ~ 426 a.a) partial recombinant protein with GST tag. MW of the GST tag alone is 26 KDa.

**Dilution**

WB~~1:500~1000

**Format**

Clear, colorless solution in phosphate buffered saline, pH 7.2 .

**Storage**

Store at -20°C or lower. Aliquot to avoid repeated freezing and thawing.

**Precautions**

SH2B Antibody (monoclonal) (M01) is for research use only and not for use in diagnostic or therapeutic procedures.

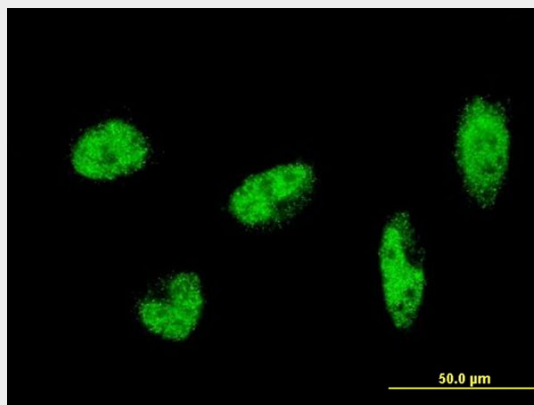
**SH2B Antibody (monoclonal) (M01) - Protocols**

Provided below are standard protocols that you may find useful for product applications.

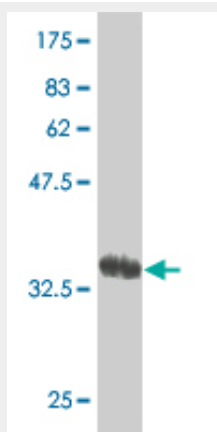
- [Western Blot](#)
- [Blocking Peptides](#)
- [Dot Blot](#)

- [Immunohistochemistry](#)
- [Immunofluorescence](#)
- [Immunoprecipitation](#)
- [Flow Cytometry](#)
- [Cell Culture](#)

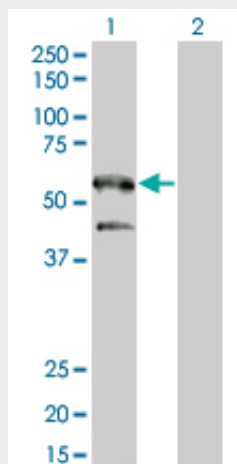
## SH2B Antibody (monoclonal) (M01) - Images



Immunofluorescence of monoclonal antibody to SH2B1 on HeLa cell . [antibody concentration 10 ug/ml]



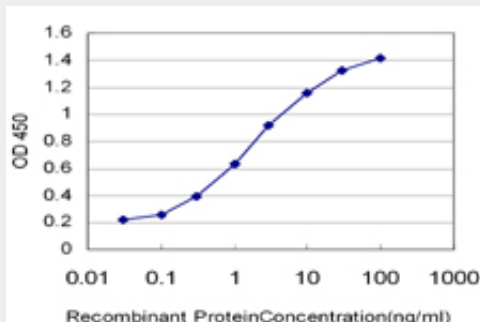
Antibody Reactive Against Recombinant Protein. Western Blot detection against Immunogen (36.63 KDa) .



Western Blot analysis of SH2B1 expression in transfected 293T cell line by SH2B1 monoclonal antibody (M01), clone 2B9.

Lane 1: SH2B1 transfected lysate(52.917 KDa).

Lane 2: Non-transfected lysate.



Detection limit for recombinant GST tagged SH2B is approximately 0.03ng/ml as a capture antibody.

### SH2B Antibody (monoclonal) (M01) - Background

This gene encodes a member of the SH2-domain containing mediators family. The encoded protein mediates activation of various kinases and may function in cytokine and growth factor receptor signaling and cellular transformation. Alternatively spliced transcript variants have been described.

### SH2B Antibody (monoclonal) (M01) - References

Evaluation of genetic susceptibility loci for obesity in Chinese women. Shi J, et al. Am J Epidemiol, 2010 Aug 1. PMID 20616199. Evaluating the discriminative power of multi-trait genetic risk scores for type 2 diabetes in a northern Swedish population. Fontaine-Bisson B, et al. Diabetologia, 2010 Oct. PMID 20571754. Genes and lifestyle factors in obesity: results from 12 462 subjects from MONICA/KORA. Holzapfel C, et al. Int J Obes (Lond), 2010 Apr 13. PMID 20386550. Implication of genetic variants near NEGR1, SEC16B, TMEM18, ETV5/DGKG, GNPDA2, LIN7C/BDNF, MTCH2, BCDIN3D/FAIM2, SH2B1, FTO, MC4R, and KCTD15 with obesity and type 2 diabetes in 7705 Chinese. Ng MC, et al. J Clin Endocrinol Metab, 2010 May. PMID 20215397. Novel obesity risk loci do not determine distribution of body fat depots: a whole-body MRI/MRS study. Haupt A, et al. Obesity (Silver Spring), 2010 Jun. PMID 19910938.