

SHC1 Antibody (monoclonal) (M01)**Mouse monoclonal antibody raised against a partial recombinant SHC1.****Catalog # AT3880a****Specification**

SHC1 Antibody (monoclonal) (M01) - Product Information

Application	WB, IHC, IF, E
Primary Accession	P29353
Other Accession	BC033925
Reactivity	Human
Host	mouse
Clonality	Monoclonal
Isotype	IgG1 Kappa
Calculated MW	62822

SHC1 Antibody (monoclonal) (M01) - Additional Information**Gene ID** 6464**Other Names**

SHC-transforming protein 1, SHC-transforming protein 3, SHC-transforming protein A, Src homology 2 domain-containing-transforming protein C1, SH2 domain protein C1, SHC1, SHC, SHCA

Target/Specificity

SHC1 (AAH33925, 171 a.a. ~ 280 a.a) partial recombinant protein with GST tag. MW of the GST tag alone is 26 KDa.

DilutionWB~~1:500~1000
IHC~~1:100~500
IF~~1:50~200
E~~N/A**Format**

Clear, colorless solution in phosphate buffered saline, pH 7.2 .

Storage

Store at -20°C or lower. Aliquot to avoid repeated freezing and thawing.

Precautions

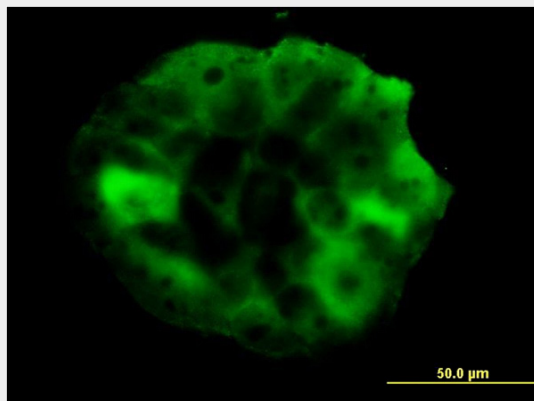
SHC1 Antibody (monoclonal) (M01) is for research use only and not for use in diagnostic or therapeutic procedures.

SHC1 Antibody (monoclonal) (M01) - Protocols

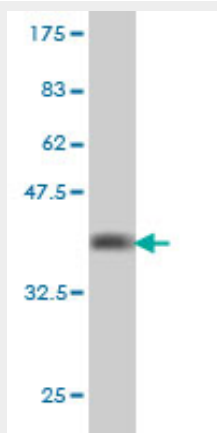
Provided below are standard protocols that you may find useful for product applications.

- [Western Blot](#)
- [Blocking Peptides](#)
- [Dot Blot](#)
- [Immunohistochemistry](#)
- [Immunofluorescence](#)
- [Immunoprecipitation](#)
- [Flow Cytometry](#)
- [Cell Culture](#)

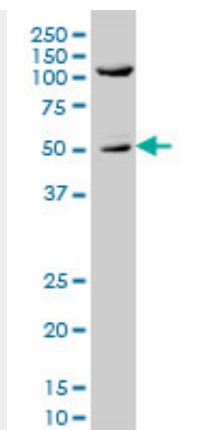
SHC1 Antibody (monoclonal) (M01) - Images



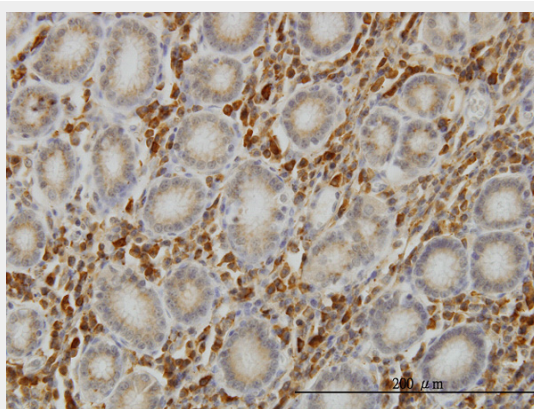
Immunofluorescence of monoclonal antibody to SHC1 on A-431 cell. [antibody concentration 10 ug/ml]



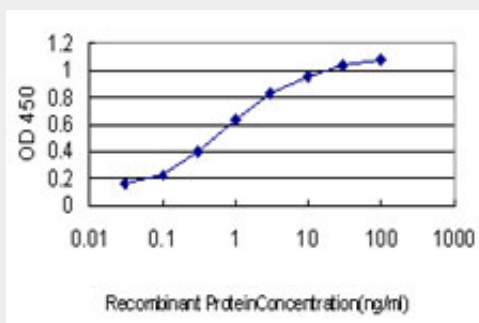
Antibody Reactive Against Recombinant Protein. Western Blot detection against Immunogen (37.73 KDa) .



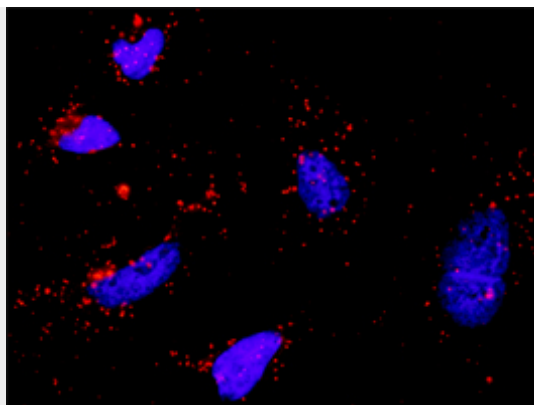
SHC1 monoclonal antibody (M01), clone 3F4 Western Blot analysis of SHC1 expression in A-431 (Cat # AT3880a)



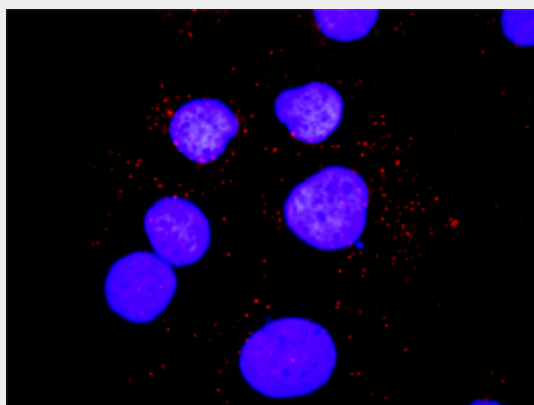
Immunoperoxidase of monoclonal antibody to SHC1 on formalin-fixed paraffin-embedded human stomach. [antibody concentration 1 ug/ml]



Detection limit for recombinant GST tagged SHC1 is approximately 0.03ng/ml as a capture antibody.



Proximity Ligation Analysis of protein-protein interactions between PIK3R1 and SHC1 HeLa cells were stained with anti-PIK3R1 rabbit purified polyclonal 1:1200 and anti-SHC1 mouse monoclonal antibody 1:50. Each red dot represents the detection of protein-protein interaction complex, and nuclei were counterstained with DAPI (blue).



Proximity Ligation Analysis of protein-protein interactions between PIK3R1 and SHC1 Huh7 cells were stained with anti-PIK3R1 rabbit purified polyclonal 1:1200 and anti-SHC1 mouse monoclonal antibody 1:50. Each red dot represents the detection of protein-protein interaction complex, and nuclei were counterstained with DAPI (blue).

SHC1 Antibody (monoclonal) (M01) - References

Oxidative stress alters the regulatory control of p66Shc and Akt in PINK1 deficient cells. Maj MC, et al. Biochem Biophys Res Commun, 2010 Aug 27. PMID 20637729. Tarp regulates early Chlamydia-induced host cell survival through interactions with the human adaptor protein SHC1. Mehlitz A, et al. J Cell Biol, 2010 Jul 12. PMID 20624904. Hyperglycemia-induced p66shc inhibits insulin-like growth factor I-dependent cell survival via impairment of Src kinase-mediated phosphoinositide-3 kinase/AKT activation in vascular smooth muscle cells. Xi G, et al. Endocrinology, 2010 Aug. PMID 20534722. Personalized smoking cessation: interactions between nicotine dose, dependence and quit-success genotype score. Rose JE, et al. Mol Med, 2010 Jul-Aug. PMID 20379614. p66Shc is indispensable for phenethyl isothiocyanate-induced apoptosis in human prostate cancer cells. Xiao D, et al. Cancer Res, 2010 Apr 15. PMID 20354186.