

**SHMT1 Antibody (monoclonal) (M01)****Mouse monoclonal antibody raised against a partial recombinant SHMT1.****Catalog # AT3884a****Specification**

---

**SHMT1 Antibody (monoclonal) (M01) - Product Information**

Application	WB, IHC, E
Primary Accession	<a href="#">P34896</a>
Other Accession	<a href="#">NM_004169</a>
Reactivity	Human
Host	mouse
Clonality	Monoclonal
Isotype	IgG1 Kappa
Calculated MW	53083

**SHMT1 Antibody (monoclonal) (M01) - Additional Information****Gene ID** 6470**Other Names**

Serine hydroxymethyltransferase, cytosolic, SHMT, Glycine hydroxymethyltransferase, Serine methylase, SHMT1

**Target/Specificity**

SHMT1 (NP\_004160, 374 a.a. ~ 482 a.a) partial recombinant protein with GST tag. MW of the GST tag alone is 26 KDa.

**Dilution**

WB~~1:500~1000

IHC~~1:100~500

E~~N/A

**Format**

Clear, colorless solution in phosphate buffered saline, pH 7.2 .

**Storage**

Store at -20°C or lower. Aliquot to avoid repeated freezing and thawing.

**Precautions**

SHMT1 Antibody (monoclonal) (M01) is for research use only and not for use in diagnostic or therapeutic procedures.

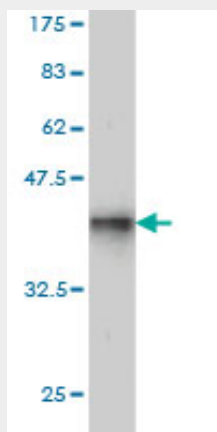
**SHMT1 Antibody (monoclonal) (M01) - Protocols**

Provided below are standard protocols that you may find useful for product applications.

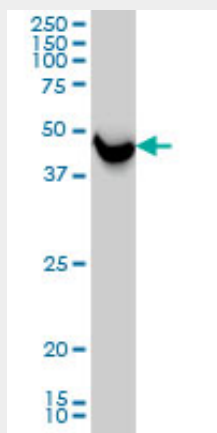
- [Western Blot](#)

- [Blocking Peptides](#)
- [Dot Blot](#)
- [Immunohistochemistry](#)
- [Immunofluorescence](#)
- [Immunoprecipitation](#)
- [Flow Cytometry](#)
- [Cell Culture](#)

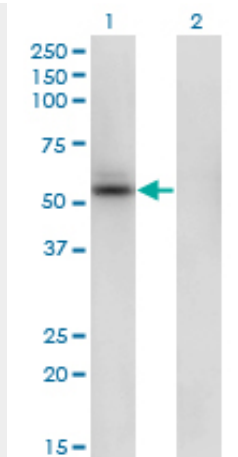
#### SHMT1 Antibody (monoclonal) (M01) - Images



Antibody Reactive Against Recombinant Protein. Western Blot detection against Immunogen (37.73 KDa) .



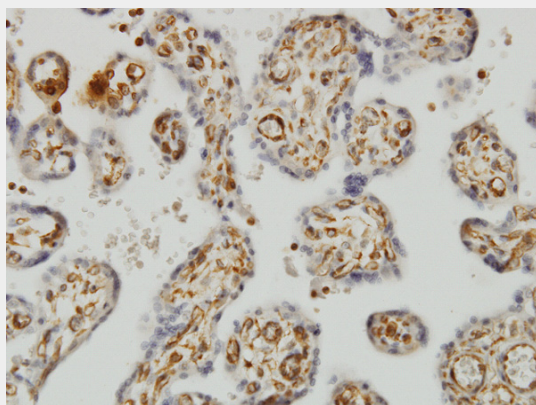
SHMT1 monoclonal antibody (M01), clone 4F9 Western Blot analysis of SHMT1 expression in HeLa (Cat # AT3884a)



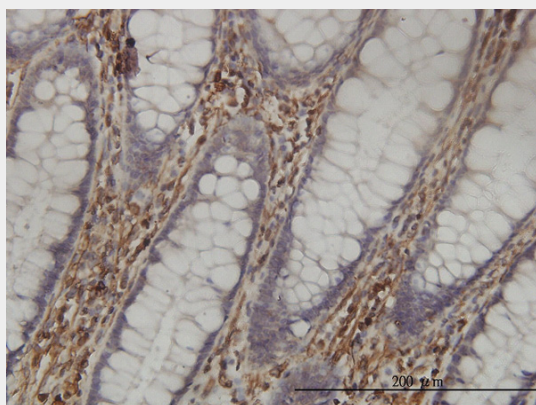
Western Blot analysis of SHMT1 expression in transfected 293T cell line by SHMT1 monoclonal antibody (M01), clone 4F9.

Lane 1: SHMT1 transfected lysate(53.1 KDa).

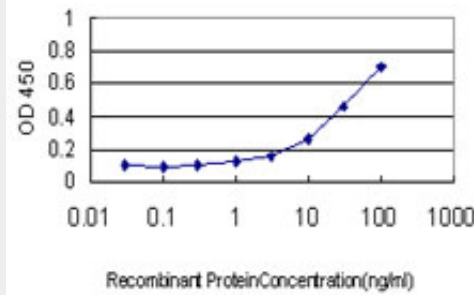
Lane 2: Non-transfected lysate.



Immunoperoxidase of monoclonal antibody to SHMT1 on formalin-fixed paraffin-embedded human placenta. [antibody concentration 1 ug/ml]



Immunoperoxidase of monoclonal antibody to SHMT1 on formalin-fixed paraffin-embedded human colon tissue. [antibody concentration 1 ug/ml]



Detection limit for recombinant GST tagged SHMT1 is approximately 1ng/ml as a capture antibody.

### SHMT1 Antibody (monoclonal) (M01) - Background

This gene encodes the cellular form of serine hydroxymethyltransferase, a pyridoxal phosphate-containing enzyme that catalyzes the reversible conversion of serine and tetrahydrofolate to glycine and 5,10-methylene tetrahydrofolate. This reaction provides one carbon units for synthesis of methionine, thymidylate, and purines in the cytoplasm. This gene is located within the Smith-Magenis syndrome region on chromosome 17. Alternative splicing of this gene results in 2 transcript variants encoding 2 different isoforms. Additional transcript variants have been described, but their biological validity has not been determined.

### SHMT1 Antibody (monoclonal) (M01) - References

Association of genetic variation in cystathionine-beta-synthase and arsenic metabolism. Porter KE, et al. Environ Res, 2010 Aug. PMID 20670920. Maternal genes and facial clefts in offspring: a comprehensive search for genetic associations in two population-based cleft studies from Scandinavia. Jugessur A, et al. PLoS One, 2010 Jul 9. PMID 20634891. A candidate gene study of folate-associated one carbon metabolism genes and colorectal cancer risk. Levine AJ, et al. Cancer Epidemiol Biomarkers Prev, 2010 Jul. PMID 20615890. Genetic and lifestyle variables associated with homocysteine concentrations and the distribution of folate derivatives in healthy premenopausal women. Summers CM, et al. Birth Defects Res A Clin Mol Teratol, 2010 Aug. PMID 20544798. Candidate gene association studies and risk of childhood acute lymphoblastic leukemia: a systematic review and meta-analysis. Vijayakrishnan J, et al. Haematologica, 2010 Aug. PMID 20511665.