

SLC15A1 Antibody (monoclonal) (M01)**Mouse monoclonal antibody raised against a partial recombinant SLC15A1.****Catalog # AT3902a****Specification**

SLC15A1 Antibody (monoclonal) (M01) - Product Information

Application	WB, E
Primary Accession	P46059
Other Accession	NM_005073
Reactivity	Human
Host	mouse
Clonality	Monoclonal
Isotype	IgG2b Kappa
Calculated MW	78806

SLC15A1 Antibody (monoclonal) (M01) - Additional Information**Gene ID** 6564**Other Names**

Solute carrier family 15 member 1, Intestinal H(+)/peptide cotransporter, Oligopeptide transporter, small intestine isoform, Peptide transporter 1, SLC15A1, PEPT1

Target/Specificity

SLC15A1 (NP_005064, 473 a.a. ~ 572 a.a) partial recombinant protein with GST tag. MW of the GST tag alone is 26 KDa.

Dilution

WB~~1:500~1000

Format

Clear, colorless solution in phosphate buffered saline, pH 7.2 .

Storage

Store at -20°C or lower. Aliquot to avoid repeated freezing and thawing.

Precautions

SLC15A1 Antibody (monoclonal) (M01) is for research use only and not for use in diagnostic or therapeutic procedures.

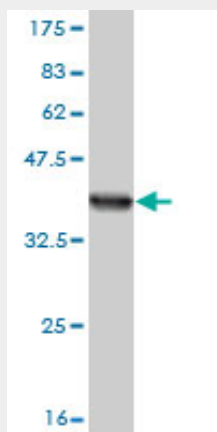
SLC15A1 Antibody (monoclonal) (M01) - Protocols

Provided below are standard protocols that you may find useful for product applications.

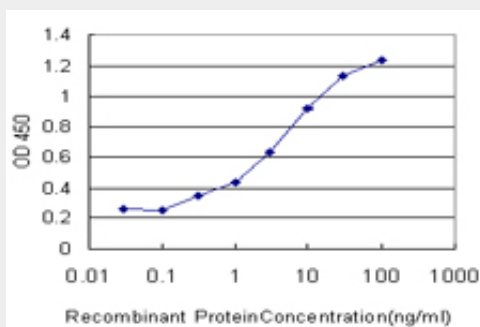
- [Western Blot](#)
- [Blocking Peptides](#)
- [Dot Blot](#)

- [Immunohistochemistry](#)
- [Immunofluorescence](#)
- [Immunoprecipitation](#)
- [Flow Cytometry](#)
- [Cell Culture](#)

SLC15A1 Antibody (monoclonal) (M01) - Images



Antibody Reactive Against Recombinant Protein. Western Blot detection against Immunogen (36.74 kDa) .



Detection limit for recombinant GST tagged SLC15A1 is approximately 0.1 ng/ml as a capture antibody.

SLC15A1 Antibody (monoclonal) (M01) - Background

This gene encodes an intestinal hydrogen peptide cotransporter that is a member of the solute carrier family 15. The encoded protein is localized to the brush border membrane of the intestinal epithelium and mediates the uptake of di- and tripeptides from the lumen into the enterocytes. This protein plays an important role in the uptake and digestion of dietary proteins. This protein also facilitates the absorption of numerous peptidomimetic drugs.

SLC15A1 Antibody (monoclonal) (M01) - References

The apical (hPepT1) and basolateral peptide transport systems of Caco-2 cells are regulated by AMP-activated protein kinase. Pieri M, et al. *Am J Physiol Gastrointest Liver Physiol*, 2010 Jul. PMID 20430871. L-type voltage-dependent calcium channel alpha subunit 1C is a novel candidate gene associated with secondary hyperparathyroidism: an application of haplotype-based analysis for multiple linked single nucleotide polymorphisms. Yokoyama K, et al. *Nephron Clin Pract*, 2010. PMID 20424473. Personalized smoking cessation: interactions between nicotine dose, dependence and quit-success genotype score. Rose JE, et al. *Mol Med*, 2010 Jul-Aug. PMID 20379614. Transport of the advanced glycation end products alanylpyrrolidine and pyrrolylalanine by the human proton-coupled

peptide transporter hPEPT1. Geissler S, et al. J Agric Food Chem, 2010 Feb 24. PMID 20104847. The bioactive dipeptide anserine is transported by human proton-coupled peptide transporters. Geissler S, et al. FEBS J, 2010 Feb. PMID 20067523.