

SLC19A2 Antibody (monoclonal) (M10)**Mouse monoclonal antibody raised against a partial recombinant SLC19A2.****Catalog # AT3904a****Specification**

SLC19A2 Antibody (monoclonal) (M10) - Product Information

Application	WB, E
Primary Accession	O60779
Other Accession	NM_006996.1
Reactivity	Human
Host	mouse
Clonality	Monoclonal
Isotype	IgG2a Kappa
Calculated MW	55400

SLC19A2 Antibody (monoclonal) (M10) - Additional Information**Gene ID** 10560**Other Names**

Thiamine transporter 1, ThTr-1, ThTr1, Solute carrier family 19 member 2, Thiamine carrier 1, TC1, SLC19A2, THT1, TRMA

Target/Specificity

SLC19A2 (NP_008927.1, 209 a.a. ~ 285 a.a) partial recombinant protein with GST tag. MW of the GST tag alone is 26 KDa.

Dilution

WB~~1:500~1000

Format

Clear, colorless solution in phosphate buffered saline, pH 7.2 .

Storage

Store at -20°C or lower. Aliquot to avoid repeated freezing and thawing.

Precautions

SLC19A2 Antibody (monoclonal) (M10) is for research use only and not for use in diagnostic or therapeutic procedures.

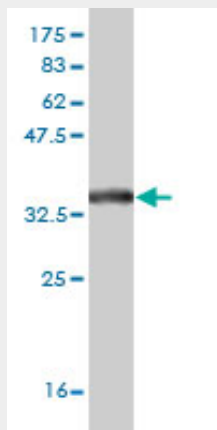
SLC19A2 Antibody (monoclonal) (M10) - Protocols

Provided below are standard protocols that you may find useful for product applications.

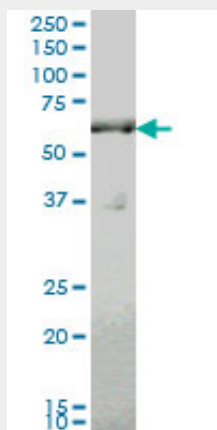
- [Western Blot](#)
- [Blocking Peptides](#)
- [Dot Blot](#)

- [Immunohistochemistry](#)
- [Immunofluorescence](#)
- [Immunoprecipitation](#)
- [Flow Cytometry](#)
- [Cell Culture](#)

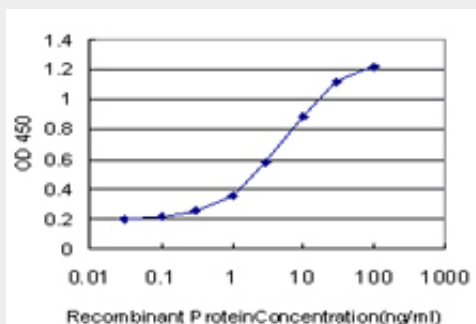
SLC19A2 Antibody (monoclonal) (M10) - Images



Antibody Reactive Against Recombinant Protein. Western Blot detection against Immunogen (34.21 kDa) .



SLC19A2 monoclonal antibody (M10), clone 5B10 Western Blot analysis of SLC19A2 expression in A-431 (Cat # AT3904a)



Detection limit for recombinant GST tagged SLC19A2 is approximately 0.1 ng/ml as a capture antibody.

SLC19A2 Antibody (monoclonal) (M10) - Background

This gene encodes the thiamin transporter protein. Mutations in this gene cause thiamin-responsive megaloblastic anemia syndrome (TRMA), which is an autosomal recessive disorder characterized by diabetes mellitus, megaloblastic anemia and sensorineural deafness.

SLC19A2 Antibody (monoclonal) (M10) - References

Variation at the NFATC2 Locus Increases the Risk of Thiazolinedione-Induced Edema in the Diabetes REduction Assessment with ramipril and rosiglitazone Medication (DREAM) Study. Bailey SD, et al. Diabetes Care, 2010 Jul 13. PMID 20628086. Gene-centric association signals for lipids and apolipoproteins identified via the HumanCVD BeadChip. Talmud PJ, et al. Am J Hum Genet, 2009 Nov. PMID 19913121. Systematic molecular genetic analysis of congenital sideroblastic anemia: evidence for genetic heterogeneity and identification of novel mutations. Bergmann AK, et al. Pediatr Blood Cancer, 2010 Feb. PMID 19731322. Follow-up of a major linkage peak on chromosome 1 reveals suggestive QTLs associated with essential hypertension: GenNet study. Ehret GB, et al. Eur J Hum Genet, 2009 Dec. PMID 19536175. Pancreatic beta cells and islets take up thiamin by a regulated carrier-mediated process: studies using mice and human pancreatic preparations. Mee L, et al. Am J Physiol Gastrointest Liver Physiol, 2009 Jul. PMID 19423748.