

SLC26A2 Antibody (monoclonal) (M04)

Mouse monoclonal antibody raised against a partial recombinant SLC26A2.

Catalog # AT3914a

Specification

SLC26A2 Antibody (monoclonal) (M04) - Product Information

Application	WB, E
Primary Accession	P50443
Other Accession	NM_000112
Reactivity	Human
Host	mouse
Clonality	Monoclonal
Isotype	IgG2b Kappa
Calculated MW	81662

SLC26A2 Antibody (monoclonal) (M04) - Additional Information

Gene ID 1836

Other Names

Sulfate transporter, Diastrophic dysplasia protein, Solute carrier family 26 member 2, SLC26A2, DTD, DTDST

Target/Specificity

SLC26A2 (NP_000103.1, 1 a.a. ~ 108 a.a) partial recombinant protein with GST tag. MW of the GST tag alone is 26 KDa.

Dilution

WB~~1:500~1000

E~~N/A

Format

Clear, colorless solution in phosphate buffered saline, pH 7.2 .

Storage

Store at -20°C or lower. Aliquot to avoid repeated freezing and thawing.

Precautions

SLC26A2 Antibody (monoclonal) (M04) is for research use only and not for use in diagnostic or therapeutic procedures.

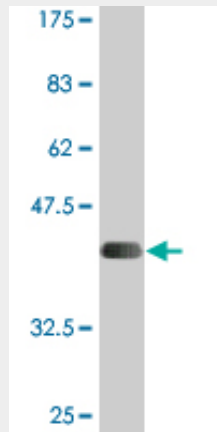
SLC26A2 Antibody (monoclonal) (M04) - Protocols

Provided below are standard protocols that you may find useful for product applications.

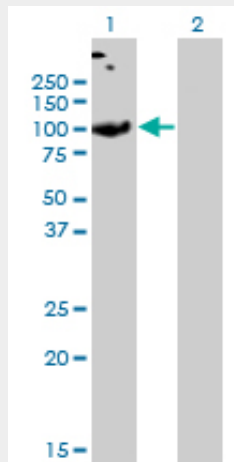
- [Western Blot](#)
- [Blocking Peptides](#)

- [Dot Blot](#)
- [Immunohistochemistry](#)
- [Immunofluorescence](#)
- [Immunoprecipitation](#)
- [Flow Cytometry](#)
- [Cell Culture](#)

SLC26A2 Antibody (monoclonal) (M04) - Images

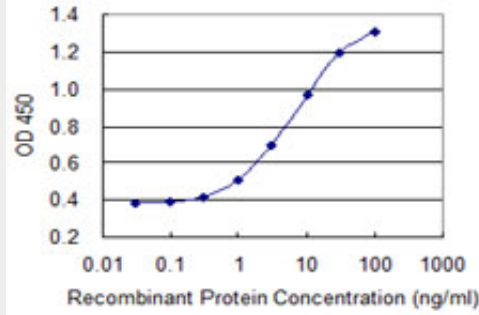


Antibody Reactive Against Recombinant Protein. Western Blot detection against Immunogen (37.62 kDa) .



Western Blot analysis of SLC26A2 expression in transfected 293T cell line by SLC26A2 monoclonal antibody (M04), clone 3F6.

Lane 1: SLC26A2 transfected lysate(81.6 kDa).
Lane 2: Non-transfected lysate.



Detection limit for recombinant GST tagged SLC26A2 is 0.1 ng/ml as a capture antibody.

SLC26A2 Antibody (monoclonal) (M04) - Background

The diastrophic dysplasia sulfate transporter is a transmembrane glycoprotein implicated in the pathogenesis of several human chondrodysplasias. It apparently is critical in cartilage for sulfation of proteoglycans and matrix organization.

SLC26A2 Antibody (monoclonal) (M04) - References

1. Epigenetic Silencing of the Sulfate Transporter Gene DTDST Induces Sialyl Lewis^x Expression and Accelerates Proliferation of Colon Cancer Cells. Yusa A, Miyazaki K, Kimura N, Izawa M, Kannagi R. *Cancer Res.* 2010 May 15;70(10):4064-73. Epub 2010 May 11.