

SLC2A4RG Antibody (monoclonal) (M02)**Mouse monoclonal antibody raised against a partial recombinant SLC2A4RG.****Catalog # AT3920a****Specification**

SLC2A4RG Antibody (monoclonal) (M02) - Product Information

Application	WB, IF
Primary Accession	O9NR83
Other Accession	NM_020062
Reactivity	Human
Host	mouse
Clonality	Monoclonal
Isotype	IgG2a Kappa
Calculated MW	41267

SLC2A4RG Antibody (monoclonal) (M02) - Additional Information**Gene ID** 56731**Other Names**

SLC2A4 regulator, GLUT4 enhancer factor, GEF, Huntington disease gene regulatory region-binding protein 1, HDBP-1, SLC2A4RG, HDBP1

Target/Specificity

SLC2A4RG (NP_064446, 178 a.a. ~ 269 a.a) partial recombinant protein with GST tag. MW of the GST tag alone is 26 KDa.

Dilution

WB~~1:500~1000

IF~~1:50~200

Format

Clear, colorless solution in phosphate buffered saline, pH 7.2 .

Storage

Store at -20°C or lower. Aliquot to avoid repeated freezing and thawing.

Precautions

SLC2A4RG Antibody (monoclonal) (M02) is for research use only and not for use in diagnostic or therapeutic procedures.

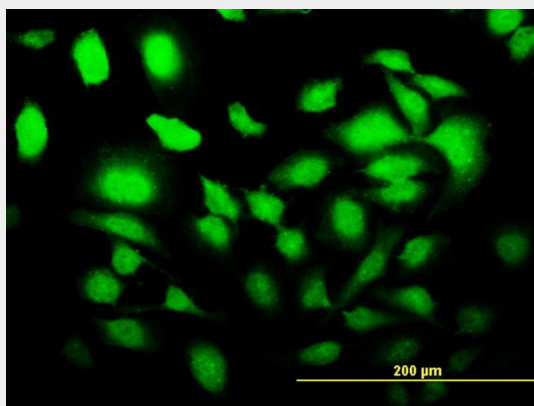
SLC2A4RG Antibody (monoclonal) (M02) - Protocols

Provided below are standard protocols that you may find useful for product applications.

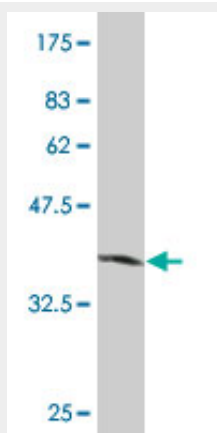
- [Western Blot](#)
- [Blocking Peptides](#)

- [Dot Blot](#)
- [Immunohistochemistry](#)
- [Immunofluorescence](#)
- [Immunoprecipitation](#)
- [Flow Cytometry](#)
- [Cell Culture](#)

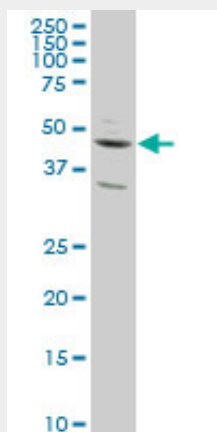
SLC2A4RG Antibody (monoclonal) (M02) - Images



Immunofluorescence of monoclonal antibody to SLC2A4RG on HeLa cell. [antibody concentration 10 ug/ml]



Antibody Reactive Against Recombinant Protein. Western Blot detection against Immunogen (35.86 KDa) .



SLC2A4RG monoclonal antibody (M02), clone 4C10 Western Blot analysis of SLC2A4RG expression in HeLa ((Cat # AT3920a)

SLC2A4RG Antibody (monoclonal) (M02) - Background

The protein encoded by this gene is a nuclear transcription factor involved in the activation of the solute carrier family 2 member 4 gene. The encoded protein interacts with another transcription factor, myocyte enhancer factor 2, to activate transcription of this gene.

SLC2A4RG Antibody (monoclonal) (M02) - References

Polymorphism in postinsulin receptor signaling pathway is not associated with polycystic ovary syndrome. Jones MR, et al. Fertil Steril, 2008 Dec. PMID 18249389. Exercise increases MEF2- and GEF DNA-binding activity in human skeletal muscle. McGee SL, et al. FASEB J, 2006 Feb. PMID 16368714. The status, quality, and expansion of the NIH full-length cDNA project: the Mammalian Gene Collection (MGC). Gerhard DS, et al. Genome Res, 2004 Oct. PMID 15489334. Regulation of the human GLUT4 gene promoter: interaction between a transcriptional activator and myocyte enhancer factor 2A. Knight JB, et al. Proc Natl Acad Sci U S A, 2003 Dec 9. PMID 14630949. Novel nuclear shuttle proteins, HDBP1 and HDBP2, bind to neuronal cell-specific cis-regulatory element in the promoter for the human Huntington's disease gene. Tanaka K, et al. J Biol Chem, 2004 Feb 20. PMID 14625278.