

SLC45A2 Antibody (monoclonal) (M01)**Mouse monoclonal antibody raised against a full length recombinant SLC45A2.****Catalog # AT3925a****Specification**

SLC45A2 Antibody (monoclonal) (M01) - Product Information

Application	WB, E
Primary Accession	O9UMX9
Other Accession	BC003597
Reactivity	Human
Host	mouse
Clonality	Monoclonal
Isotype	IgG2b Kappa
Calculated MW	58268

SLC45A2 Antibody (monoclonal) (M01) - Additional Information**Gene ID** 51151**Other Names**

Membrane-associated transporter protein, Melanoma antigen AIM1, Protein AIM-1, Solute carrier family 45 member 2, SLC45A2, AIM1, MATP

Target/Specificity

SLC45A2 (AAH03597, 1 a.a. ~ 243 a.a) full-length recombinant protein with GST tag. MW of the GST tag alone is 26 KDa.

Dilution

WB~~1:500~1000

E~~N/A

Format

Clear, colorless solution in phosphate buffered saline, pH 7.2 .

Storage

Store at -20°C or lower. Aliquot to avoid repeated freezing and thawing.

Precautions

SLC45A2 Antibody (monoclonal) (M01) is for research use only and not for use in diagnostic or therapeutic procedures.

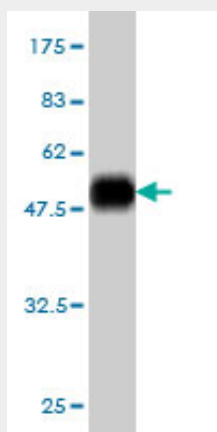
SLC45A2 Antibody (monoclonal) (M01) - Protocols

Provided below are standard protocols that you may find useful for product applications.

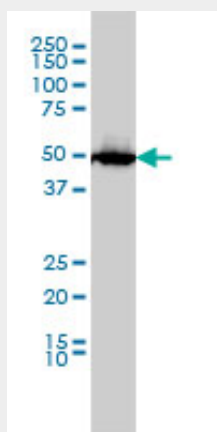
- [Western Blot](#)
- [Blocking Peptides](#)

- [Dot Blot](#)
- [Immunohistochemistry](#)
- [Immunofluorescence](#)
- [Immunoprecipitation](#)
- [Flow Cytometry](#)
- [Cell Culture](#)

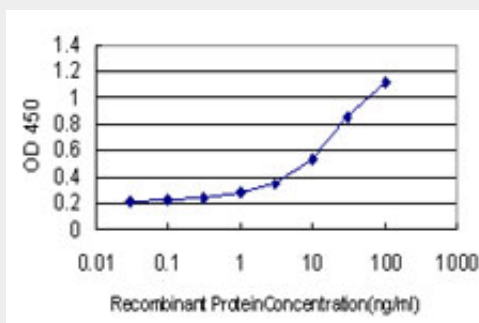
SLC45A2 Antibody (monoclonal) (M01) - Images



Antibody Reactive Against Recombinant Protein. Western Blot detection against Immunogen (52.47 KDa) .



MATP monoclonal antibody (M01), clone 2F4 Western Blot analysis of MATP expression in HL-60 (Cat # AT3925a)



Detection limit for recombinant GST tagged SLC45A2 is approximately 0.1ng/ml as a capture antibody.

SLC45A2 Antibody (monoclonal) (M01) - Background

This gene encodes a transporter protein that mediates melanin synthesis. The protein is expressed in a high percentage of melanoma cell lines. Mutations in this gene are a cause of oculocutaneous albinism type 4, and polymorphisms in this gene are associated with variations in skin and hair color. Multiple transcript variants encoding different isoforms have been found for this gene.

SLC45A2 Antibody (monoclonal) (M01) - References

Variation at the NFATC2 Locus Increases the Risk of Thiazolinedione-Induced Edema in the Diabetes REduction Assessment with ramipril and rosiglitazone Medication (DREAM) Study. Bailey SD, et al. Diabetes Care, 2010 Jul 13. PMID 20628086. Web-based, participant-driven studies yield novel genetic associations for common traits. Eriksson N, et al. PLoS Genet, 2010 Jun 24. PMID 20585627. Decreased recognition of negative affect after selective serotonin reuptake inhibition is dependent on genotype. Hinkelmann K, et al. Psychiatry Res, 2010 May 30. PMID 20381161. A decreasing gradient of 374F allele frequencies in the skin pigmentation gene SLC45A2, from the north of West Europe to North Africa. Lucotte G, et al. Biochem Genet, 2010 Feb. PMID 19916045. Gene-centric association signals for lipids and apolipoproteins identified via the HumanCVD BeadChip. Talmud PJ, et al. Am J Hum Genet, 2009 Nov. PMID 19913121.