

SLURP1 Antibody (monoclonal) (M06)**Mouse monoclonal antibody raised against a partial recombinant SLURP1.****Catalog # AT3935a****Specification**

SLURP1 Antibody (monoclonal) (M06) - Product Information

Application	WB, IP, E
Primary Accession	P55000
Other Accession	NM_020427
Reactivity	Human
Host	mouse
Clonality	Monoclonal
Isotype	IgG2a Kappa
Calculated MW	11186

SLURP1 Antibody (monoclonal) (M06) - Additional Information**Gene ID** 57152**Other Names**

Secreted Ly-6/uPAR-related protein 1, SLURP-1, ARS component B, ARS(component B)-81/S, Anti-neoplastic urinary protein, ANUP, SLURP1, ARS

Target/Specificity

SLURP1 (NP_065160, 25 a.a. ~ 102 a.a) partial recombinant protein with GST tag. MW of the GST tag alone is 26 KDa.

Dilution

WB~~1:500~1000

IP~~N/A

E~~N/A

Format

Clear, colorless solution in phosphate buffered saline, pH 7.2 .

Storage

Store at -20°C or lower. Aliquot to avoid repeated freezing and thawing.

Precautions

SLURP1 Antibody (monoclonal) (M06) is for research use only and not for use in diagnostic or therapeutic procedures.

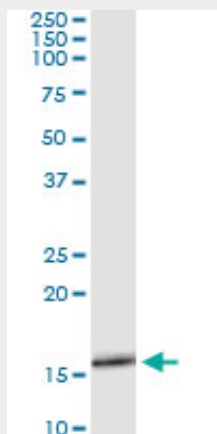
SLURP1 Antibody (monoclonal) (M06) - Protocols

Provided below are standard protocols that you may find useful for product applications.

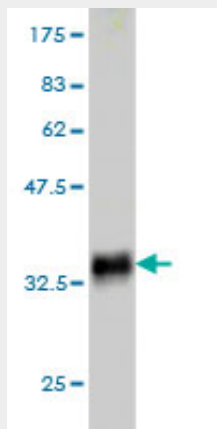
- [Western Blot](#)

- [Blocking Peptides](#)
- [Dot Blot](#)
- [Immunohistochemistry](#)
- [Immunofluorescence](#)
- [Immunoprecipitation](#)
- [Flow Cytometry](#)
- [Cell Culture](#)

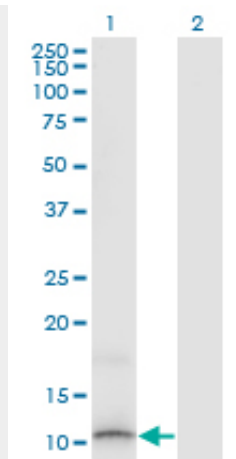
SLURP1 Antibody (monoclonal) (M06) - Images



Immunoprecipitation of SLURP1 transfected lysate using anti-SLURP1 monoclonal antibody and Protein A Magnetic Bead ([U0007](#)), and immunoblotted with SLURP1 MaxPab rabbit polyclonal antibody.



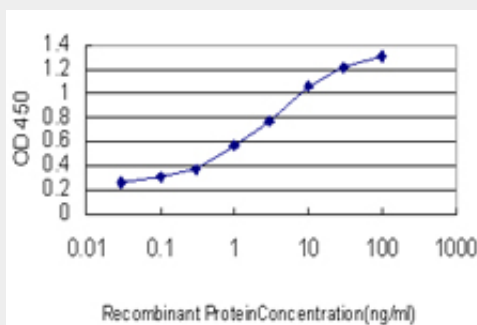
Antibody Reactive Against Recombinant Protein. Western Blot detection against Immunogen (34.32 KDa) .



Western Blot analysis of SLURP1 expression in transfected 293T cell line by SLURP1 monoclonal antibody (M06), clone 4D1.

Lane 1: SLURP1 transfected lysate(11.2 KDa).

Lane 2: Non-transfected lysate.



Detection limit for recombinant GST tagged SLURP1 is approximately 0.1ng/ml as a capture antibody.

SLURP1 Antibody (monoclonal) (M06) - Background

The protein encoded by this gene is a member of the Ly6/uPAR family but lacks a GPI-anchoring signal sequence. It is thought that this secreted protein contains antitumor activity. Mutations in this gene have been associated with Mal de Meleda, a rare autosomal recessive skin disorder. This gene maps to the same chromosomal region as several members of the Ly6/uPAR family of glycoprotein receptors.

SLURP1 Antibody (monoclonal) (M06) - References

1. Down-regulation of secreted lymphocyte antigen-6/urokinase-type plasminogen activator receptor-related peptide-1 (SLURP-1), an endogenous allosteric $\alpha 7$ nicotinic acetylcholine receptor modulator, in murine and human asthmatic conditions. Narumoto O, Horiguchi K, Horiguchi S, Moriwaki Y, Takano-Ohmuro H, Shoji S, Misawa H, Yamashita N, Nagase T, Kawashima K, Yamashita N. *Biochem Biophys Res Commun*. 2010 Jul 8. [Epub ahead of print]