

**SMAD6 Antibody (monoclonal) (M08)****Mouse monoclonal antibody raised against a partial recombinant SMAD6.****Catalog # AT3947a****Specification**

---

**SMAD6 Antibody (monoclonal) (M08) - Product Information**

Application	WB, E
Primary Accession	<a href="#">O43541</a>
Other Accession	<a href="#">NM_005585</a>
Reactivity	Human
Host	mouse
Clonality	Monoclonal
Isotype	IgG2a Kappa
Calculated MW	53497

**SMAD6 Antibody (monoclonal) (M08) - Additional Information****Gene ID** 4091**Other Names**

Mothers against decapentaplegic homolog 6, MAD homolog 6, Mothers against DPP homolog 6, SMAD family member 6, SMAD 6, Smad6, hSMAD6, SMAD6, MADH6

**Target/Specificity**

SMAD6 (NP\_005576, 285 a.a. ~ 384 a.a) partial recombinant protein with GST tag. MW of the GST tag alone is 26 KDa.

**Dilution**

WB~~1:500~1000

E~~N/A

**Format**

Clear, colorless solution in phosphate buffered saline, pH 7.2 .

**Storage**

Store at -20°C or lower. Aliquot to avoid repeated freezing and thawing.

**Precautions**

SMAD6 Antibody (monoclonal) (M08) is for research use only and not for use in diagnostic or therapeutic procedures.

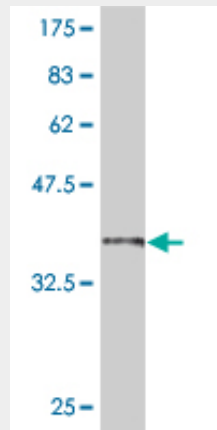
**SMAD6 Antibody (monoclonal) (M08) - Protocols**

Provided below are standard protocols that you may find useful for product applications.

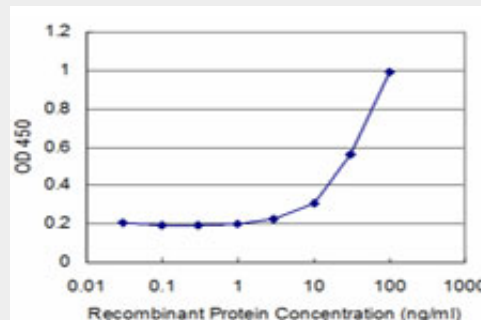
- [Western Blot](#)
- [Blocking Peptides](#)

- [Dot Blot](#)
- [Immunohistochemistry](#)
- [Immunofluorescence](#)
- [Immunoprecipitation](#)
- [Flow Cytometry](#)
- [Cell Culture](#)

### SMAD6 Antibody (monoclonal) (M08) - Images



Antibody Reactive Against Recombinant Protein. Western Blot detection against Immunogen (36.74 kDa) .



Detection limit for recombinant GST tagged SMAD6 is approximately 3ng/ml as a capture antibody.

### SMAD6 Antibody (monoclonal) (M08) - Background

The protein encoded by this gene belongs to the SMAD family of proteins, which are related to Drosophila 'mothers against decapentaplegic' (Mad) and C. elegans Sma. SMAD proteins are signal transducers and transcriptional modulators that mediate multiple signaling pathways. This protein functions in the negative regulation of BMP and TGF-beta/activin-signalling. Multiple transcript variants encoding different isoforms have been found for this gene.

### SMAD6 Antibody (monoclonal) (M08) - References

Smad2 and Smad6 as predictors of overall survival in oral squamous cell carcinoma patients. Mangone FR, et al. Mol Cancer, 2010 May 12. PMID 20462450. Association of TGFBR2 polymorphism with risk of sudden cardiac arrest in patients with coronary artery disease. Tseng ZH, et al. Heart Rhythm, 2009 Dec. PMID 19959123. Downregulation of SMAD2, 4 and 6 mRNA and TGFbeta receptor I mRNA in lesional and non-lesional psoriatic skin. Yu H, et al. Acta Derm Venereol, 2009. PMID 19688145. Bone mass effects of a Smad6 gene polymorphism in Japanese postmenopausal women. Urano T, et al. J Bone Miner Metab, 2009. PMID 19277452. A new nonsense mutation of

SMAD8 associated with pulmonary arterial hypertension. Shintani M, et al. J Med Genet, 2009 May.  
PMID 19211612.