

SMAD7 Antibody (monoclonal) (M09)**Mouse monoclonal antibody raised against a partial recombinant SMAD7.****Catalog # AT3949a****Specification**

SMAD7 Antibody (monoclonal) (M09) - Product Information

Application	WB, IHC, E
Primary Accession	O15105
Other Accession	NM_005904
Reactivity	Human
Host	Mouse
Clonality	Monoclonal
Isotype	IgG2a Kappa
Calculated MW	46426

SMAD7 Antibody (monoclonal) (M09) - Additional Information**Gene ID** 4092**Other Names**

Mothers against decapentaplegic homolog 7, MAD homolog 7, Mothers against DPP homolog 7, Mothers against decapentaplegic homolog 8, MAD homolog 8, Mothers against DPP homolog 8, SMAD family member 7, SMAD 7, Smad7, hSMAD7, SMAD7, MADH7, MADH8

Target/Specificity

SMAD7 (NP_005895, 160 a.a. ~ 260 a.a) partial recombinant protein with GST tag. MW of the GST tag alone is 26 KDa.

Dilution

WB~~1:500~1000

IHC~~1:100~500

E~~N/A

Format

Clear, colorless solution in phosphate buffered saline, pH 7.2 .

Storage

Store at -20°C or lower. Aliquot to avoid repeated freezing and thawing.

Precautions

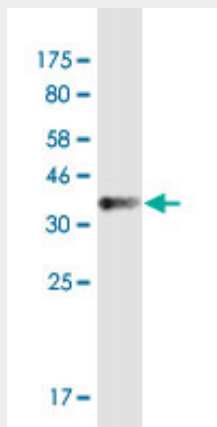
SMAD7 Antibody (monoclonal) (M09) is for research use only and not for use in diagnostic or therapeutic procedures.

SMAD7 Antibody (monoclonal) (M09) - Protocols

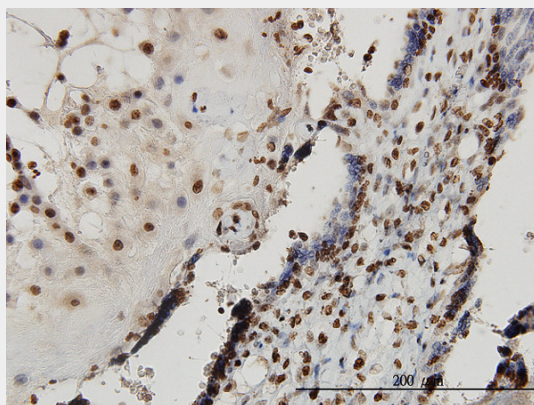
Provided below are standard protocols that you may find useful for product applications.

- [Western Blot](#)
- [Blocking Peptides](#)
- [Dot Blot](#)
- [Immunohistochemistry](#)
- [Immunofluorescence](#)
- [Immunoprecipitation](#)
- [Flow Cytometry](#)
- [Cell Culture](#)

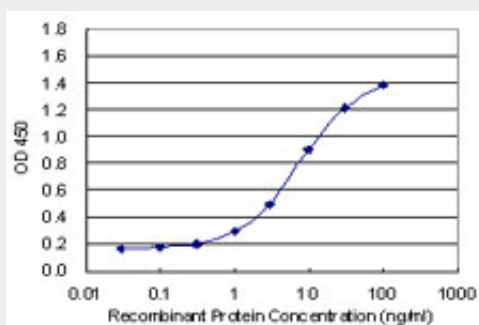
SMAD7 Antibody (monoclonal) (M09) - Images



Antibody Reactive Against Recombinant Protein. Western Blot detection against Immunogen (36.85 KDa) .



Immunoperoxidase of monoclonal antibody to SMAD7 on formalin-fixed paraffin-embedded human placenta. [antibody concentration 3 ug/ml]



Detection limit for recombinant GST tagged SMAD7 is 0.3 ng/ml as a capture antibody.

SMAD7 Antibody (monoclonal) (M09) - Background

The protein encoded by this gene is a nuclear protein that binds the E3 ubiquitin ligase SMURF2. Upon binding, this complex translocates to the cytoplasm, where it interacts with TGF-beta receptor type-1 (TGFB1), leading to the degradation of both the encoded protein and TGFB1. Expression of this gene is induced by TGFB1. Variations in this gene are a cause of susceptibility to colorectal cancer type 3 (CRC3). Several transcript variants encoding different isoforms have been found for this gene.

SMAD7 Antibody (monoclonal) (M09) - References

1. Aberrant expression in multiple components of the transforming growth factor- β 1-induced Smad signaling pathway during 7,12-dimethylbenz[a]anthracene-induced hamster buccal-pouch squamous-cell carcinogenesis. Chen YK, Yang SH, Huang AH, Hsue SS, Lin LM. Oral Oncol. 2011 Feb 26. [Epub ahead of print]