

SMARCB1 Antibody (monoclonal) (M01)**Mouse monoclonal antibody raised against a partial recombinant SMARCB1.****Catalog # AT3950a****Specification**

SMARCB1 Antibody (monoclonal) (M01) - Product Information

Application	WB, IHC
Primary Accession	Q12824
Other Accession	NM_003073
Reactivity	Human, Mouse, Rat
Host	mouse
Clonality	Monoclonal
Isotype	IgG1 Kappa
Calculated MW	44141

SMARCB1 Antibody (monoclonal) (M01) - Additional Information**Gene ID** 6598**Other Names**

SWI/SNF-related matrix-associated actin-dependent regulator of chromatin subfamily B member 1, BRG1-associated factor 47, BAF47, Integrase interactor 1 protein, SNF5 homolog, hSNF5, SMARCB1, BAF47, INI1, SNF5L1

Target/Specificity

SMARCB1 (NP_003064, 81 a.a. ~ 180 a.a) partial recombinant protein with GST tag. MW of the GST tag alone is 26 KDa.

Dilution

WB~~1:500~1000

IHC~~1:100~500

Format

Clear, colorless solution in phosphate buffered saline, pH 7.2 .

Storage

Store at -20°C or lower. Aliquot to avoid repeated freezing and thawing.

Precautions

SMARCB1 Antibody (monoclonal) (M01) is for research use only and not for use in diagnostic or therapeutic procedures.

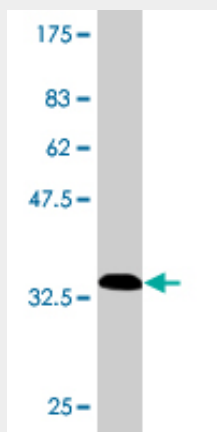
SMARCB1 Antibody (monoclonal) (M01) - Protocols

Provided below are standard protocols that you may find useful for product applications.

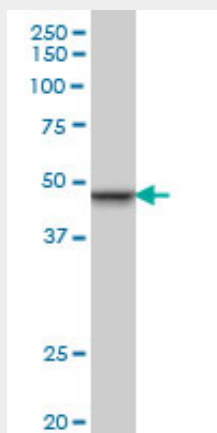
- [Western Blot](#)

- [Blocking Peptides](#)
- [Dot Blot](#)
- [Immunohistochemistry](#)
- [Immunofluorescence](#)
- [Immunoprecipitation](#)
- [Flow Cytometry](#)
- [Cell Culture](#)

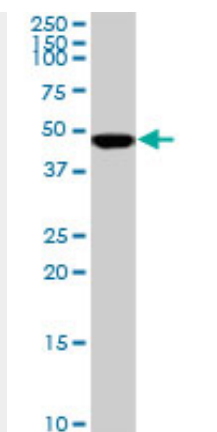
SMARCB1 Antibody (monoclonal) (M01) - Images



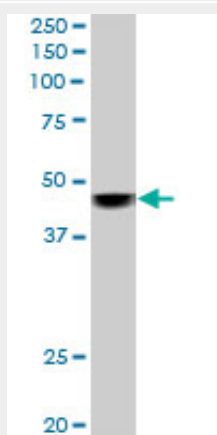
Antibody Reactive Against Recombinant Protein. Western Blot detection against Immunogen (36.74 KDa) .



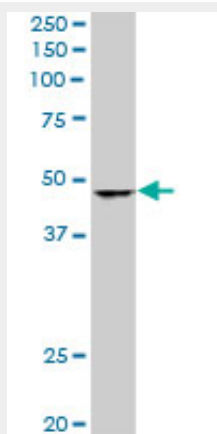
SMARCB1 monoclonal antibody (M01), clone 3E10 Western Blot analysis of SMARCB1 expression in PC-12 ((Cat # AT3950a)



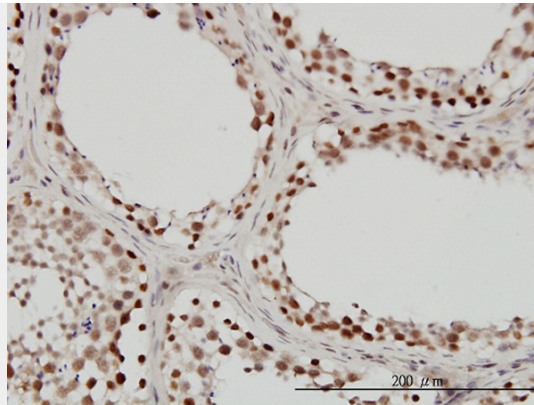
SMARCB1 monoclonal antibody (M01), clone 3E10. Western Blot analysis of SMARCB1 expression in HeLa S3 NE (Cat # AT3950a)



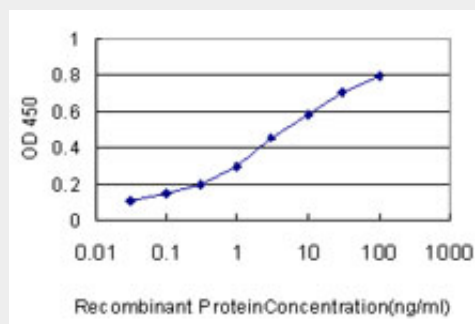
SMARCB1 monoclonal antibody (M01), clone 3E10. Western Blot analysis of SMARCB1 expression in Raw 264.7 (Cat # AT3950a)



SMARCB1 monoclonal antibody (M01), clone 3E10. Western Blot analysis of SMARCB1 expression in NIH/3T3 (Cat # AT3950a)



Immunoperoxidase of monoclonal antibody to SMARCB1 on formalin-fixed paraffin-embedded human testis. [antibody concentration 3 ug/ml]



Detection limit for recombinant GST tagged SMARCB1 is approximately 0.03ng/ml as a capture antibody.

SMARCB1 Antibody (monoclonal) (M01) - Background

The protein encoded by this gene is part of a complex that relieves repressive chromatin structures, allowing the transcriptional machinery to access its targets more effectively. The encoded nuclear protein may also bind to and enhance the DNA joining activity of HIV-1 integrase. This gene has been found to be a tumor suppressor, and mutations in it have been associated with malignant rhabdoid tumors. Two transcript variants encoding different isoforms have been found for this gene.

SMARCB1 Antibody (monoclonal) (M01) - References

1.IGFBP7 Is Not Required for B-RAF-Induced Melanocyte Senescence.Scurr LL, Pupo GM, Becker TM, Lai K, Schrama D, Haferkamp S, Irvine M, Scolyer RA, Mann GJ, Becker JC, Kefford RF, Rizos H.Cell. 2010 May 14;141(4):717-27.

SMARCB1 Antibody (monoclonal) (M01) - Citations

- [Rhabdoid papillary meningioma: a clinicopathologic case series study.](#)