

SMARCB1 Antibody (monoclonal) (M04)**Mouse monoclonal antibody raised against a partial recombinant SMARCB1.****Catalog # AT3951a****Specification**

SMARCB1 Antibody (monoclonal) (M04) - Product Information

Application	WB
Primary Accession	Q12824
Other Accession	NM_003073
Reactivity	Human
Host	mouse
Clonality	Monoclonal
Isotype	IgG2b Kappa
Calculated MW	44141

SMARCB1 Antibody (monoclonal) (M04) - Additional Information**Gene ID** 6598**Other Names**

SWI/SNF-related matrix-associated actin-dependent regulator of chromatin subfamily B member 1, BRG1-associated factor 47, BAF47, Integrase interactor 1 protein, SNF5 homolog, hSNF5, SMARCB1, BAF47, INI1, SNF5L1

Target/Specificity

SMARCB1 (NP_003064, 81 a.a. ~ 180 a.a) partial recombinant protein with GST tag. MW of the GST tag alone is 26 KDa.

Dilution

WB~~1:500~1000

Format

Clear, colorless solution in phosphate buffered saline, pH 7.2 .

Storage

Store at -20°C or lower. Aliquot to avoid repeated freezing and thawing.

Precautions

SMARCB1 Antibody (monoclonal) (M04) is for research use only and not for use in diagnostic or therapeutic procedures.

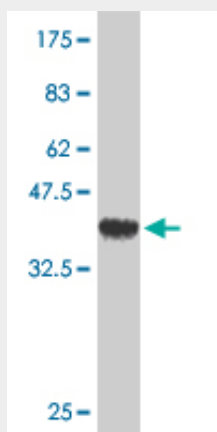
SMARCB1 Antibody (monoclonal) (M04) - Protocols

Provided below are standard protocols that you may find useful for product applications.

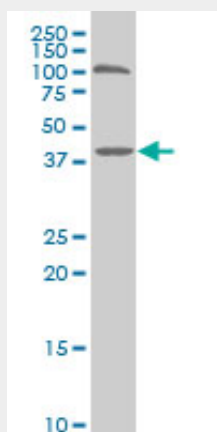
- [Western Blot](#)
- [Blocking Peptides](#)

- [Dot Blot](#)
- [Immunohistochemistry](#)
- [Immunofluorescence](#)
- [Immunoprecipitation](#)
- [Flow Cytometry](#)
- [Cell Culture](#)

SMARCB1 Antibody (monoclonal) (M04) - Images



Antibody Reactive Against Recombinant Protein. Western Blot detection against Immunogen (36.74 KDa) .



SMARCB1 monoclonal antibody (M04), clone 3H3 Western Blot analysis of SMARCB1 expression in HeLa S3 NE (Cat # AT3951a)

SMARCB1 Antibody (monoclonal) (M04) - Background

The protein encoded by this gene is part of a complex that relieves repressive chromatin structures, allowing the transcriptional machinery to access its targets more effectively. The encoded nuclear protein may also bind to and enhance the DNA joining activity of HIV-1 integrase. This gene has been found to be a tumor suppressor, and mutations in it have been associated with malignant rhabdoid tumors. Two transcript variants encoding different isoforms have been found for this gene.

SMARCB1 Antibody (monoclonal) (M04) - References

Variation at the NFATC2 Locus Increases the Risk of Thiazolidinedione-Induced Edema in the Diabetes REduction Assessment with ramipril and rosiglitazone Medication (DREAM) Study. Bailey

SD, et al. Diabetes Care, 2010 Jul 13. PMID 20628086. SMARCB1 mutations are not a common cause of multiple meningiomas. Hadfield KD, et al. J Med Genet, 2010 Aug. PMID 20472658. Epithelioid versus rhabdoid glioblastomas are distinguished by monosomy 22 and immunohistochemical expression of INI-1 but not claudin 6. Kleinschmidt-DeMasters BK, et al. Am J Surg Pathol, 2010 Mar. PMID 20118769. Rapid detection of SMARCB1 sequence variation using high resolution melting. Dagar V, et al. BMC Cancer, 2009 Dec 13. PMID 20003390. Gene-centric association signals for lipids and apolipoproteins identified via the HumanCVD BeadChip. Talmud PJ, et al. Am J Hum Genet, 2009 Nov. PMID 19913121.