

**SMARCD2 Antibody (monoclonal) (M02)****Mouse monoclonal antibody raised against a partial recombinant SMARCD2.****Catalog # AT3953a****Specification**

---

**SMARCD2 Antibody (monoclonal) (M02) - Product Information**

Application	IF, WB
Primary Accession	<a href="#">O92925</a>
Other Accession	<a href="#">NM_003077</a>
Reactivity	Human, Mouse, Rat
Host	mouse
Clonality	Monoclonal
Isotype	IgG2a Kappa
Calculated MW	58921

**SMARCD2 Antibody (monoclonal) (M02) - Additional Information****Gene ID** 6603**Other Names**

SWI/SNF-related matrix-associated actin-dependent regulator of chromatin subfamily D member 2, 60 kDa BRG-1/Brm-associated factor subunit B, BRG1-associated factor 60B, BAF60B, SMARCD2, BAF60B

**Target/Specificity**

SMARCD2 (NP\_003068, 398 a.a. ~ 474 a.a) partial recombinant protein with GST tag. MW of the GST tag alone is 26 KDa.

**Dilution**

WB~~1:500~1000

**Format**

Clear, colorless solution in phosphate buffered saline, pH 7.2 .

**Storage**

Store at -20°C or lower. Aliquot to avoid repeated freezing and thawing.

**Precautions**

SMARCD2 Antibody (monoclonal) (M02) is for research use only and not for use in diagnostic or therapeutic procedures.

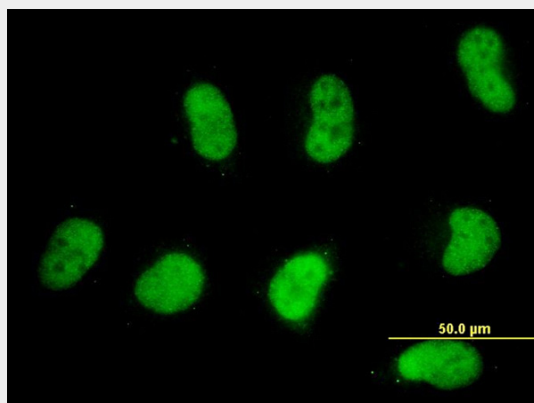
**SMARCD2 Antibody (monoclonal) (M02) - Protocols**

Provided below are standard protocols that you may find useful for product applications.

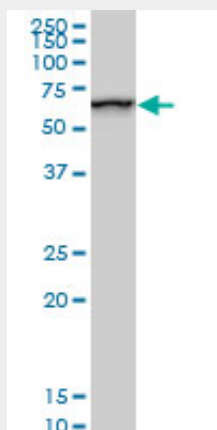
- [Western Blot](#)
- [Blocking Peptides](#)

- [Dot Blot](#)
- [Immunohistochemistry](#)
- [Immunofluorescence](#)
- [Immunoprecipitation](#)
- [Flow Cytometry](#)
- [Cell Culture](#)

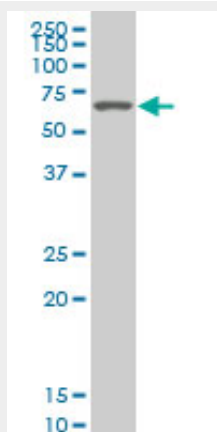
### SMARCD2 Antibody (monoclonal) (M02) - Images



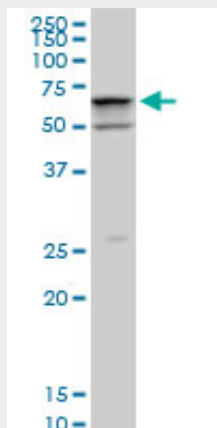
Immunofluorescence of monoclonal antibody to SMARCD2 on HeLa cell. [antibody concentration 10 ug/ml]



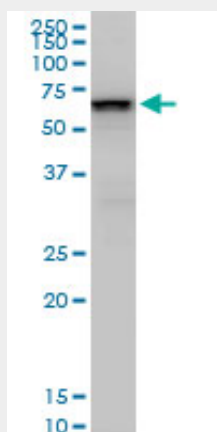
SMARCD2 monoclonal antibody (M02), clone 2B2. Western Blot analysis of SMARCD2 expression in PC-12 (Cat # L012V1).



SMARCD2 monoclonal antibody (M02), clone 2B2 Western Blot analysis of SMARCD2 expression in Hela S3 NE (Cat # AT3953a)



SMARCD2 monoclonal antibody (M02), clone 2B2. Western Blot analysis of SMARCD2 expression in Raw 264.7 (Cat # AT3953a)



SMARCD2 monoclonal antibody (M02), clone 2B2. Western Blot analysis of SMARCD2 expression in NIH/3T3 (Cat # AT3953a)

### SMARCD2 Antibody (monoclonal) (M02) - Background

The protein encoded by this gene is a member of the SWI/SNF family of proteins, whose members display helicase and ATPase activities and which are thought to regulate transcription of certain genes by altering the chromatin structure around those genes. The encoded protein is part of the large ATP-dependent chromatin remodeling complex SNF/SWI and has sequence similarity to the yeast Swp73 protein. Alternatively spliced transcript variants encoding different isoforms have been found for this gene.

### SMARCD2 Antibody (monoclonal) (M02) - References

The SWI/SNF protein BAF60b is ubiquitinated through a signalling process involving Rac GTPase and the RING finger protein Unkempt. Lor?s P, et al. FEBS J, 2010 Mar. PMID 20148946. Systematic identification of SH3 domain-mediated human protein-protein interactions by peptide array target screening. Wu C, et al. Proteomics, 2007 Jun. PMID 17474147. Global, in vivo, and site-specific phosphorylation dynamics in signaling networks. Olsen JV, et al. Cell, 2006 Nov 3. PMID 17081983. A probability-based approach for high-throughput protein phosphorylation analysis and site localization. Beausoleil SA, et al. Nat Biotechnol, 2006 Oct. PMID 16964243. The status, quality, and expansion of the NIH full-length cDNA project: the Mammalian Gene Collection (MGC). Gerhard DS, et al. Genome Res, 2004 Oct. PMID 15489334.